

e sales@laminghope.com
t 020 3617 1333

L&Hresidential
laminghope.com sales & lettings



Alconbury Close, Sommerville Court, WD6

£280,000

- Modern first floor flat
- Two bedrooms
- Allocated parking space
- 0.9 Miles from Elstree & Borehamwood train station
- Short walk from locals shops, schools and places of worship
- Unfurnished
- Available from 1/10/2021



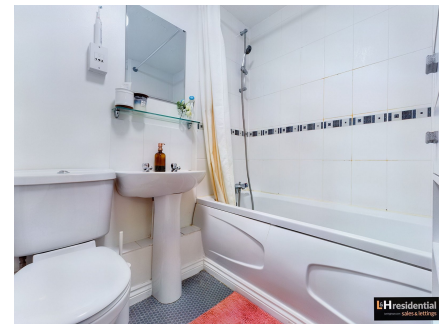
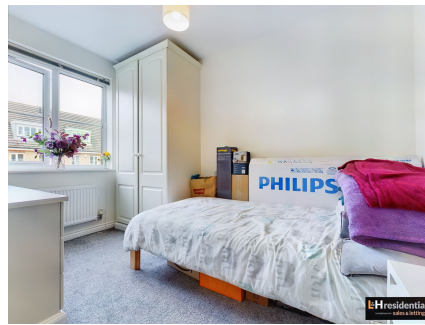
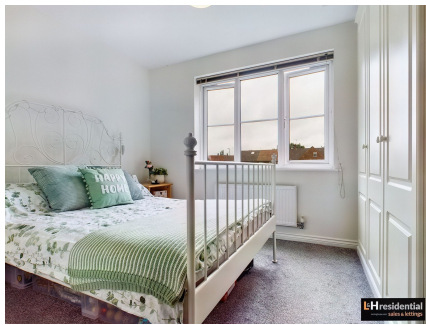


L&H Residential are proud to bring to the market this modern first floor flat located just 0.9 miles from Elstree & Borehamwood train station and a short walk to the local schools, shops and places of worship. The accommodation comprises of; two bedrooms, family bathroom, kitchen and a reception room. The property also benefits from an allocated parking space.

Unfurnished

Available 1/10/2021

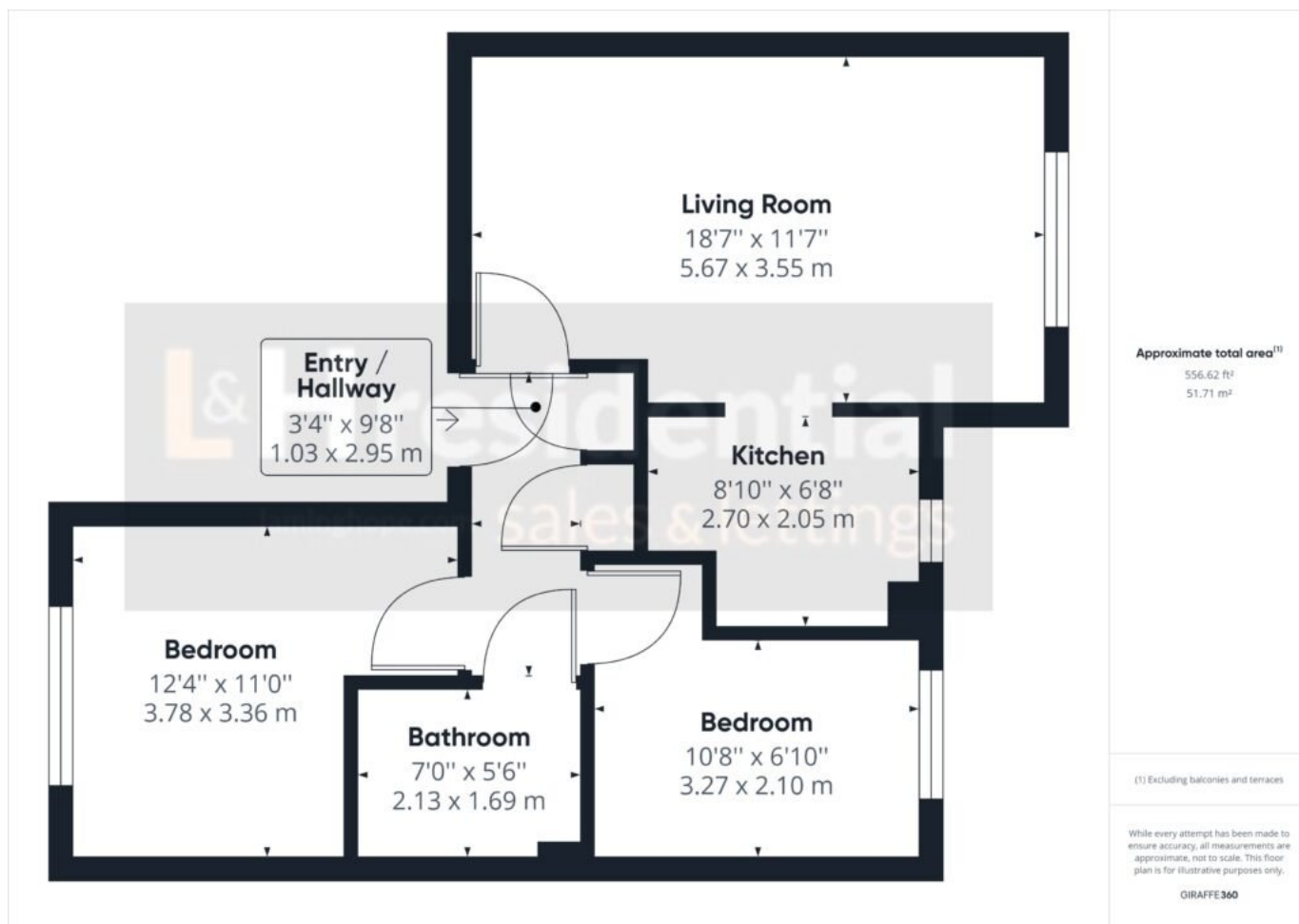
An early viewing is advised



Alconbury Close, Sommerville Court, WD6

£280,000

A well presented two bedroom first floor flat in a modern development located just 0.9 miles from Elstree & Borehamwood train station and a short walk to local schools, shops and places of worship.



Laminghope

12 Shenley Road, Borehamwood, Hertfordshire, WD6 1DL

T: 020 3617 1333

E: enquiries@laminghope.com