

e sales@laminghope.com  
t 020 3617 1333

**L&H**residential  
laminghope.com sales & lettings



## Alconbury Close, Sommerville Court, WD6

**£280,000**

- Modern first floor flat
- Two bedrooms
- Allocated parking space
- 0.9 Miles from Elstree & Borehamwood train station
- Short walk from locals shops, schools and places of worship
- Long lease & CHAIN FREE

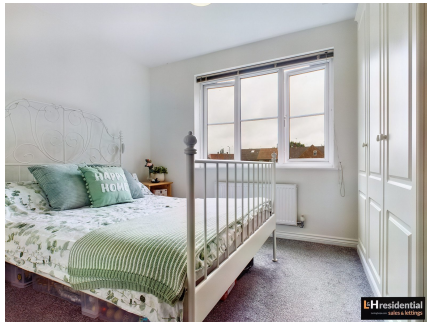






L&H Residential are proud to bring to the market this modern first floor flat located just 0.9 miles from Elstree & Borehamwood train station and a short walk to the local schools, shops and places of worship. The accommodation comprises of; two bedrooms, family bathroom, kitchen and a reception room. The property also benefits from an allocated parking space, long lease and being sold CHAIN FREE.

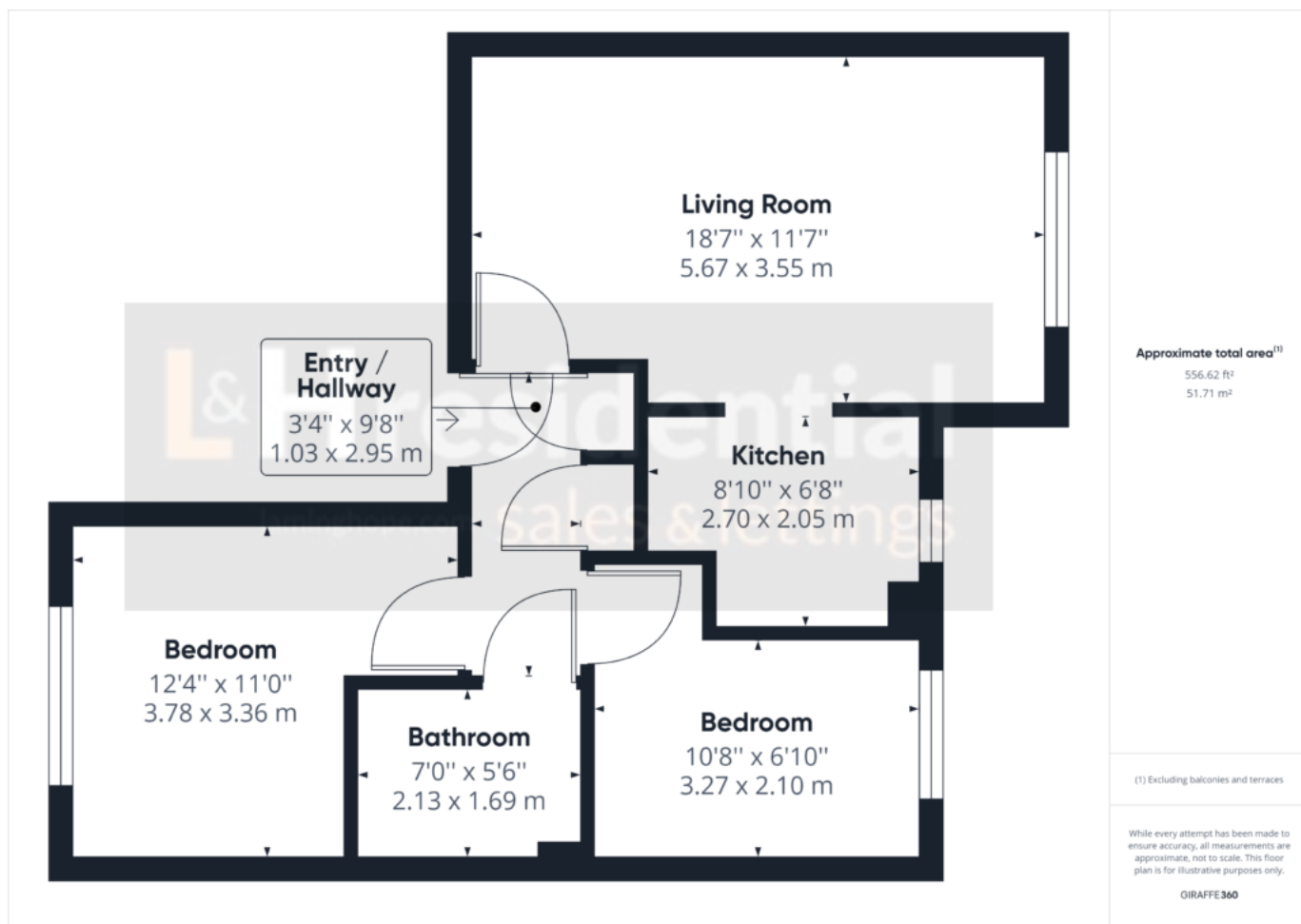
An early viewing is advised



# Alconbury Close, Sommerville Court, WD6

**£280,000**

A well presented two bedroom first floor flat in a modern development located just 0.9 miles from Elstree & Borehamwood train station and a short walk to local schools, shops and places of worship.



## Laminghope

12 Shenley Road, Borehamwood, Hertfordshire, WD6 1DL

T: 020 3617 1333

E: [enquiries@laminghope.com](mailto:enquiries@laminghope.com)