

e sales@laminghope.com  
t 020 3617 1333

**L&Hresidential**  
laminghope.com sales & lettings



## Almond Way, Borehamwood, WD6

**£475,000**

- Extended terraced house
- Three bedrooms
- Downstairs guest WC
- 26ft10 through lounge + Second reception room
- Private garden
- 0.3 miles from Elstree and Borehamwood Train Station
- Yavneh College & Primary school catchment
- Stones throw away from a footpath leading onto Furzehill Road



- On street parking



L&H Residential are proud to bring to the market this well presented and extended terraced house. The accommodation comprises of; three bedrooms, family bathroom, through lounge, second reception room, downstairs guest WC and a modern kitchen. As well as being excellently located , it has many great features including; private garden and a garage,

An early viewing is advised

**Kitchen**

**Reception Rooms**

**Bedrooms**

**Bathroom**



# Almond Way, Borehamwood, WD6

**£475,000**

A well presented and extended three bedroom terraced house located just 0.3 miles from Elstree and Borehamwood train station and a short walk to Yavneh College & Primary school.





# Almond Way, WD6

Approximate Gross Internal Area = 91.8 sq m / 988 sq ft

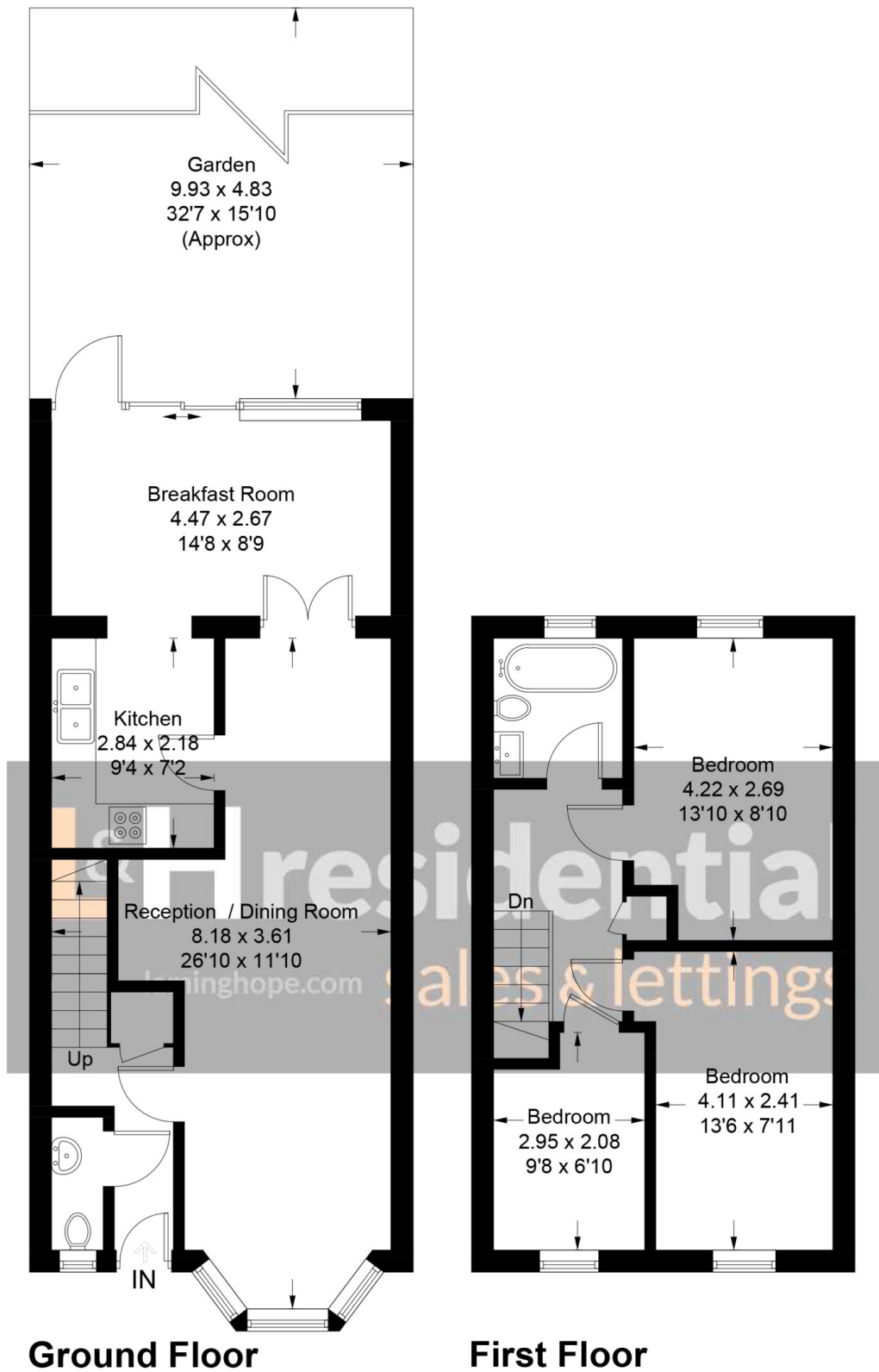


Illustration for identification purposes only, measurements are approximate, not to scale. floorplansUsketch.com © (ID668062)



12 Shenley Road, Borehamwood, Hertfordshire, WD6 1DL

T: 020 3617 1333

E: [enquiries@laminghope.com](mailto:enquiries@laminghope.com)