

e sales@laminghope.com  
t 020 3617 1333

**L&H**residential  
laminghope.com sales & lettings



## Arundel Drive, Borehamwood, WD6

**£2,350 pcm**

- Extended end of terrace house
- Three good sized bedrooms
- Two receptions
- Private garden with large outbuilding ideal for storage
- Off street parking for multiple cars
- Unfurnished & Available Now



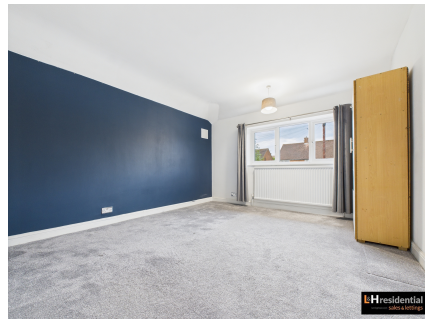




L&H Residential are proud to be presenting this splendid 3-bedroom end of terrace house, this extended property boasts a generous living space ideal for a growing family or professionals. The three well-proportioned bedrooms offer comfort and privacy, complemented by two inviting reception areas.

Stepping into the private garden, a large outbuilding provides ample storage solutions, catering to various needs. Enjoy the convenience of off-street parking, accommodating multiple vehicles seamlessly.

Unfurnished and available now, this residence presents a blank canvas awaiting personal touches. Embrace the opportunity to make this property your own, with its versatile layout and convenient location. Ideal for those seeking a combination of space, comfort, and practicality, this end of terrace house offers a welcoming ambience and room to grow. Schedule a viewing today to envision the endless possibilities this property holds for you.

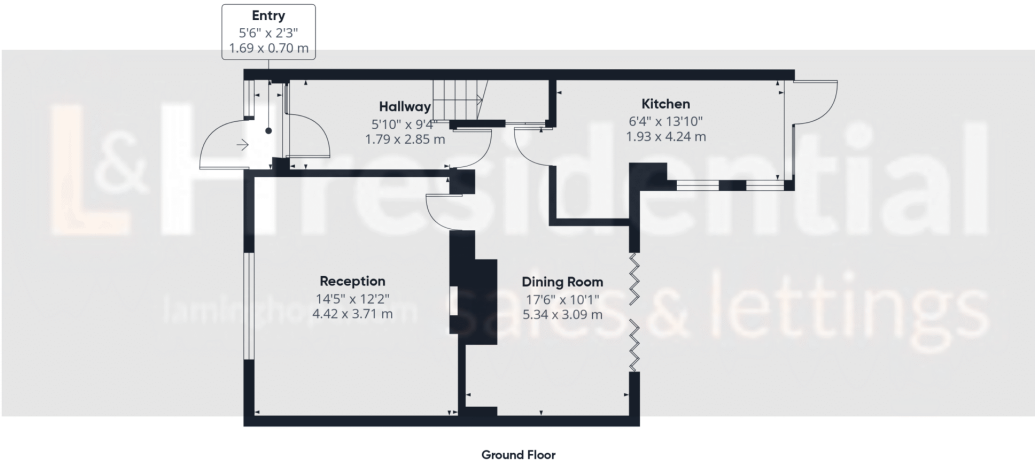


## Arundel Drive, Borehamwood, WD6

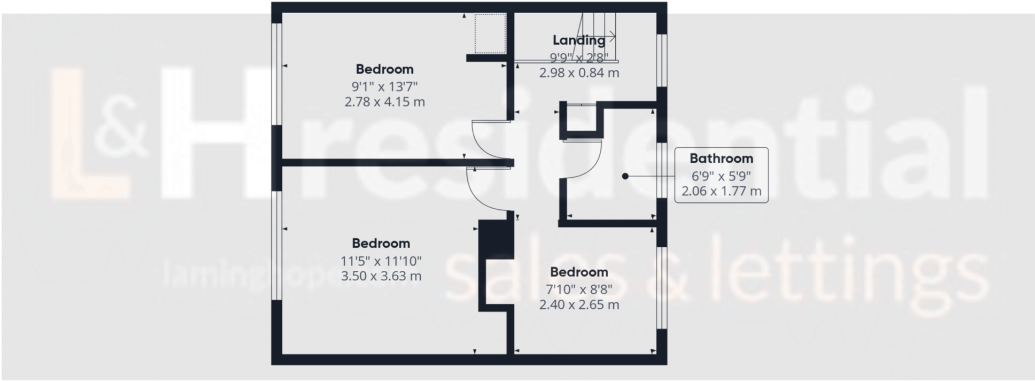
**£2,350 pcm**

Presenting a splendid 3-bed end-terrace house, ideal for families or professionals. Generous living space, 3 bedrooms, 2 reception areas. Private garden with large outbuilding for storage. Off-street parking. Unfurnished, versatile layout, convenient location. Schedule a viewing today!





Ground Floor



Floor 1

Approximate total area<sup>(1)</sup>  
932 ft<sup>2</sup>  
86.7 m<sup>2</sup>

(1) Excluding balconies and terraces

Calculations reference the RICS IPMS 3C standard. Measurements are approximate and not to scale. This floor plan is intended for illustration only.

GIRAFFE360

**Laminghope**  
12 Shenley Road, Borehamwood, Hertfordshire, WD6 1DL  
T: 020 3617 1333  
E: [enquiries@laminghope.com](mailto:enquiries@laminghope.com)