

e sales@laminghope.com  
t 020 3617 1333

**L&H**residential  
laminghope.com sales & lettings



## Ashdown Drive, Borehamwood, WD6

**£1,650 pcm**

- Two Double Bedrooms
- Ground Floor
- Communal Garden
- Separate Kitchen
- Close for station
- Parking
- Available End of February







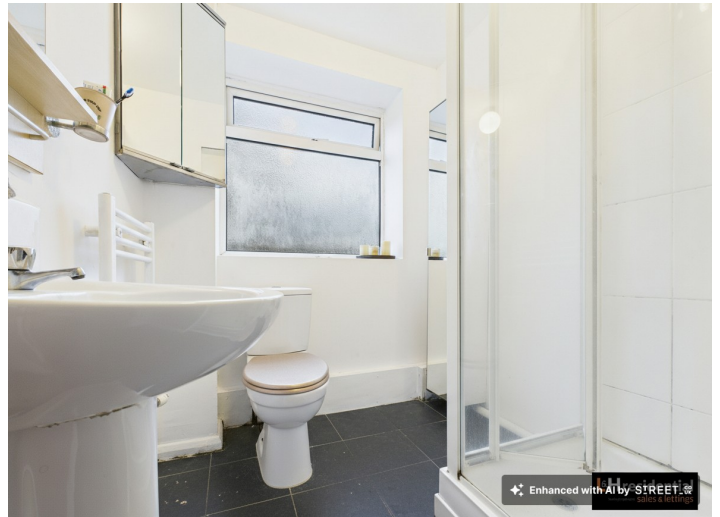
L&H Residential are proud to present this well-presented two bedroom ground floor flat offers spacious and comfortable living in a highly convenient location, ideal for professionals and small families. The property features two generously sized double bedrooms, providing ample space for relaxation and storage. The bright and airy lounge is perfect for entertaining or unwinding after a busy day. A separate kitchen is equipped with modern fittings and plenty of workspace, making meal preparation both practical and enjoyable. The flat also benefits from allocated parking, ensuring convenience for residents with vehicles. Situated close to the station, commuters will appreciate the ease of access to transport links, while local amenities are within easy reach, offering a range of shops, cafes, and services. The property is neutrally decorated throughout, allowing new tenants to add their personal touch. Additional features include secure entry and efficient heating, contributing to comfort and peace of mind. This appealing flat is available from the end of February and is offered unfurnished, providing a blank canvas for your new home. Early viewing is highly recommended to appreciate the space and location on offer. Please contact us today to arrange your appointment and secure this attractive property.

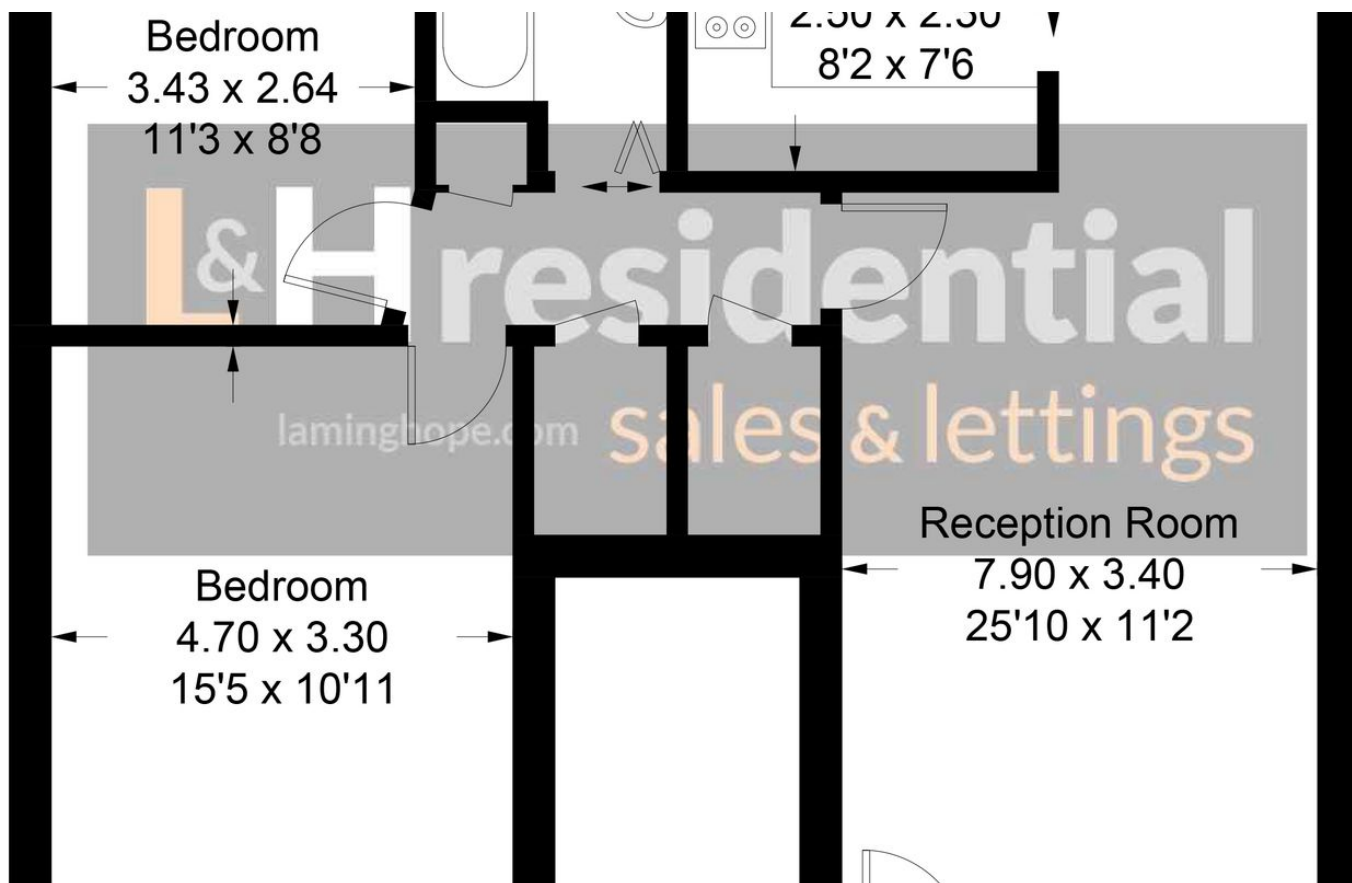


**Ashdown Drive,  
Borehamwood, WD6**

**£1,650 pcm**

Spacious two bedroom ground floor flat with modern kitchen, allocated parking, secure entry and close to station and amenities. Unfurnished, available end of February. Early viewing advised.





**Laminghope**

12 Shenley Road, Borehamwood, Hertfordshire, WD6 1DL

T: 020 3617 1333

E: [enquiries@lamingshope.com](mailto:enquiries@lamingshope.com)