

e sales@laminghope.com
t 020 3617 1333

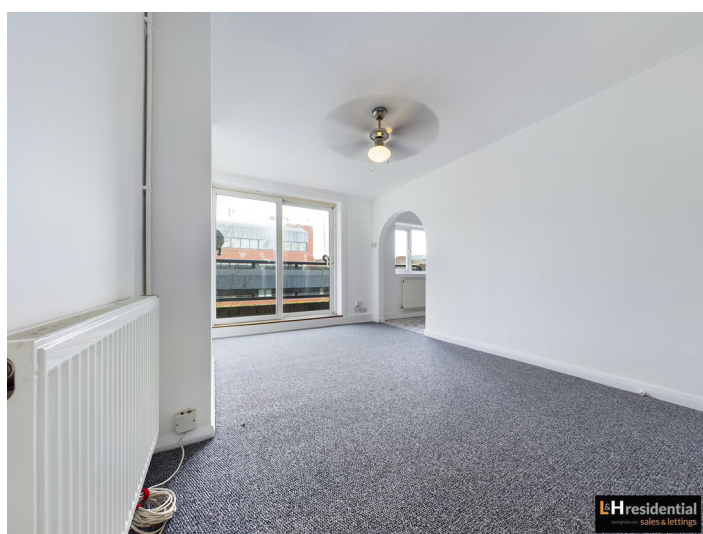
L&Hresidential
laminghope.com sales & lettings



Baker Court, Shenley Road, WD6

£1,100 pcm

- First floor flat
- Split level
- Two bedrooms
- Separate eat in kitchen
- Balcony
- Parking
- 0.6 miles from Elstree and Borehamwood train station
- Short walk to local shops and transport
- Unfurnished
- Available now





L&H Residential are proud to bring to the market this well presented first floor split level flat located just 0.6 miles from Elstree & Borehamwood train station and a short walk to local schools, shops and places of worship. The accommodation comprises of; two double bedrooms, separate eat in kitchen, lounge and a family bathroom. As well as being excellently located the property also benefits from a car park and own private balcony.

Unfurnished
Available now

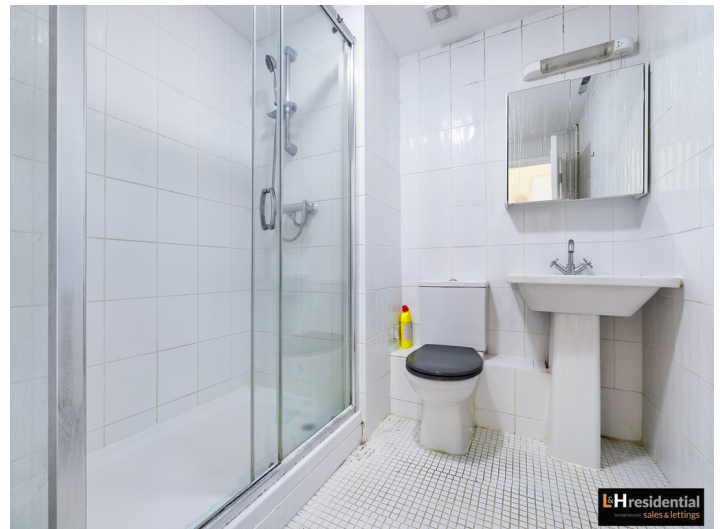
An early viewing is advised

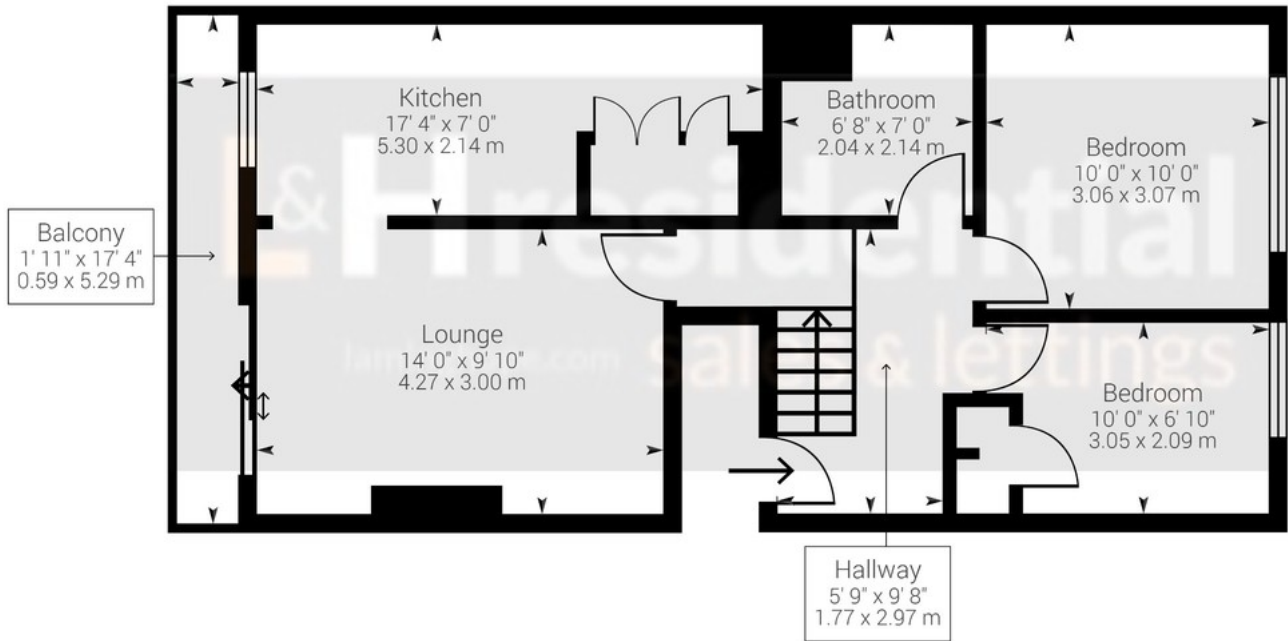


Baker Court, Shenley Road, WD6

£1,100 pcm

A well presented first floor two bedroom split level flat located just 0.6 miles from Elstree & Borehamwood train station.





Approximate net internal area: 550.07 ft² (585.8 ft²) / 51.1 m² (54.42 m²)

While every attempt has been made to ensure accuracy, all measurements are approximate, not to scale. This floor plan is for illustrative purpose only and should be used as such by any prospective tenant or purchaser.

Powered by Giraffe360

Laminghope

12 Shenley Road, Borehamwood, Hertfordshire, WD6 1DL

T: 020 3617 1333

E: enquiries@laminghope.com