

e sales@laminghope.com  
t 020 3617 1333

**L&H**residential  
laminghope.com sales & lettings



## Berwick Road, Borehamwood, WD6

**£449,950**

- Beautifully presented terraced house
- Three bedrooms
- Kitchen/diner
- Off street parking for two cars
- Large rear garden with side access
- Short walk to local schools, shops and places of Worship







L&H Residential are proud to bring to the market this excellently presented terraced house located a short walk from local schools, shops and places of worship. The accommodation comprises of; three bedrooms, modern family bathroom, lounge and a kitchen/diner. The property benefits from off street parking for two cars, large private garden with side access and potential to add a downstairs guest W.C, extend to the rear and into the loft (stpp).

An early viewing is advised



## Berwick Road, Borehamwood, WD6

**£449,950**

An excellently presented three bedroom terraced house with off street parking for two cars.





## Berwick Road, WD6

Approximate Gross Internal Area = 70.0 sq m / 753 sq ft

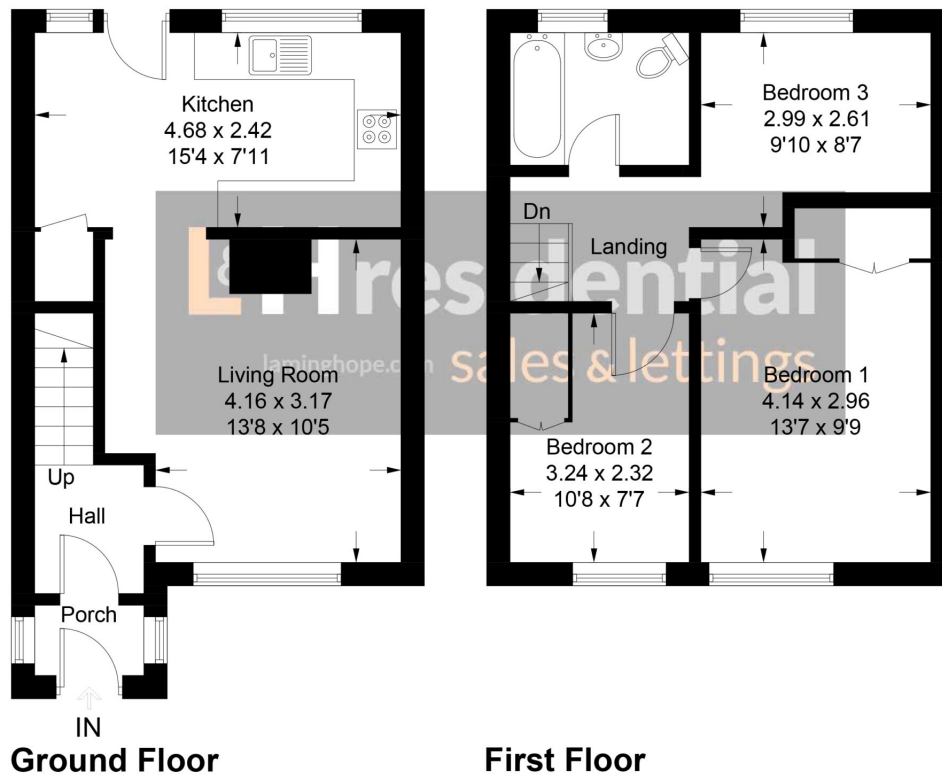


Illustration for identification purposes only, measurements are approximate, not to scale. floorplansUsketch.com © (ID825887)

### Laminghope

12 Shenley Road, Borehamwood, Hertfordshire, WD6 1DL

T: 020 3617 1333

E: enquiries@laminghope.com