

e sales@laminghope.com  
t 020 3617 1333

**L&H**residential  
laminghope.com sales & lettings



## Broughinge Road, Borehamwood, WD6

**£1,350 pcm**

- First floor flat with private garden
- Beautifully presented
- Two double bedrooms
- Separate kitchen
- Double aspect lounge
- Outbuilding for storage
- 0.7 miles from Elstree & Borehamwood train station
- Unfurnished & Move in date 14/10/22





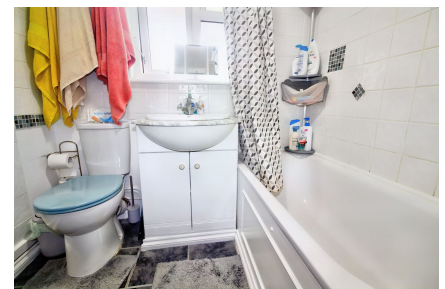
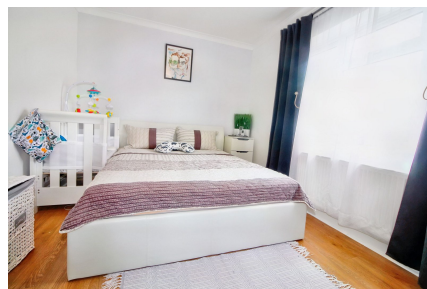


L&H Residential are proud to bring to the market this well presented and spacious first floor flat located a short walk from local shops and just 0.7 miles from Elstree and Borehamwood train station. The accommodation comprises of; two double bedrooms, bathroom, lounge and a kitchen. As well as being excellently located the property also benefits from a private garden.

Unfurnished

Move in date 14/10/22

An early viewing is recommended



## Broughinge Road, Borehamwood, WD6

**£1,350 pcm**

A two double bedroom first floor flat with private garden located just 0.7 miles from Elstree and Borehamwood train station.



## Broughinge Road, WD6

Approximate Gross Internal Area = 61.6 sq m / 663 sq ft



Illustration for identification purposes only, measurements are approximate,  
not to scale. floorplansUsketch.com © (ID877621)

### Laminghope

12 Shenley Road, Borehamwood, Hertfordshire, WD6 1DL

T: 020 3617 1333

E: [enquiries@laminghope.com](mailto:enquiries@laminghope.com)