

e sales@laminghope.com
t 020 3617 1333

L&Hresidential
laminghope.com sales & lettings



Brownlow Road, Borehamwood, WD6

£425,000

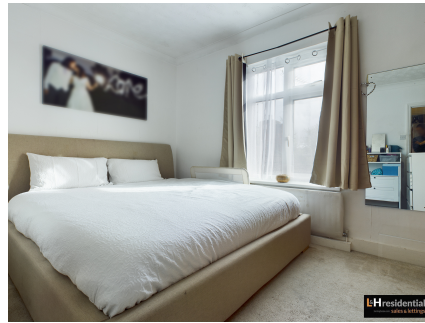
- Edwardian terraced house (built in 1903)
- Two double bedrooms
- Two receptions
- Private 63ft south facing garden
- 0.2 miles to Elstree and Borehamwood Train Station
- 0.5 mile to Yavneh College
- Period features
- Potential to do a loft conversion and rear extension (STPP)





L&H Residential is proud to bring to the market this well Edwardian terraced house built in 1903 located within a short walk of Elstree and Borehamwood Train Station, local shops, places of worship and Yavneh College. The accommodation comprises of; two reception rooms, modern kitchen, two double bedrooms and a family bathroom. The property benefits from a private south facing garden, period features such as fireplaces and high ceilings and has potential for a loft conversion and rear extension (STPP).

An early viewing is advised

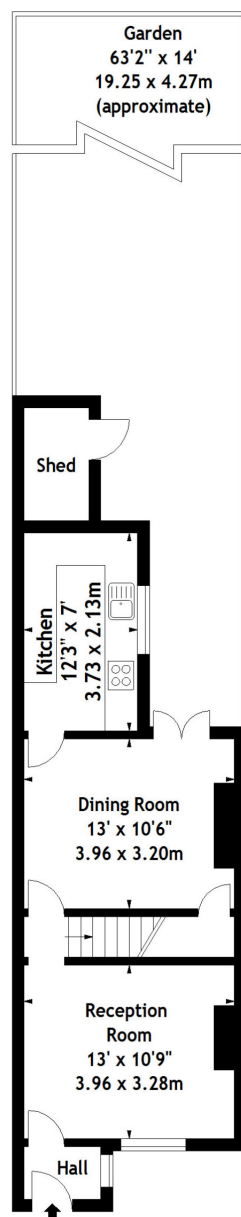


Brownlow Road, Borehamwood, WD6

£425,000

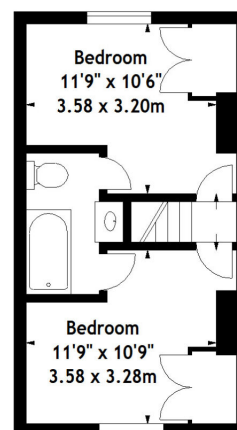
A well presented Edwardian two double bedroom terraced house located just 0.2 mile from Elstree & Borehamwood train station.





Ground Floor

Brownlow Road, WD6
Approx. Gross Internal Area
751 Sq Ft - 69.77 Sq M



First Floor

Measured in accordance with RICS guidelines. Every attempt is made to ensure accuracy, however all measurements are approximate. This floor plan is for illustrative purposes only and is not to scale.
 © Datagraphy Ltd 2016
 Photographs * Floorplans * Virtual Tours
 Tel: 0845 643 4401 www.datagraphy.com

Laminghope

12 Shenley Road, Borehamwood, Hertfordshire, WD6 1DL

T: 020 3617 1333

E: enquiries@laminghope.com