

e sales@laminghope.com
t 020 3617 1333

L&Hresidential
laminghope.com sales & lettings



Buckingham Road, Borehamwood, WD6

£475,000

- Terraced house
- Three good size bedrooms
- Downstairs guest W.C.
- Off street parking for two cars
- Private garden with side access
- Potential to extend to rear and into loft (stpp)
- Bus route 107





L&H Residential are proud to bring to the market this well presented terraced house. The accommodation comprises of; three good size bedrooms, family bathroom, kitchen/diner, lounge and a downstairs guest W.C. The property benefits from other great features including; off street parking for two cars, private garden with side access and potential to extend to rear and into loft (stpp).

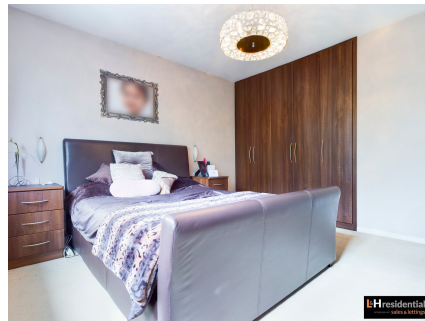
An early viewing is advised.

Kitchen/Diner

Lounge

Bedrooms

Bathroom



Buckingham Road, Borehamwood, WD6

£475,000

A well presented three bedroom terraced house located a short walk from local schools, shops and bus routes (including route 107).





Buckingham Road, WD6

Approximate Gross Internal Area
92 sq m / 990 sq ft



Illustration for identification purposes only, measurements are approximate, not to scale.
FloorplansUsketch.com © 2021 (ID 774154)

Laminghope

12 Shenley Road, Borehamwood, Hertfordshire, WD6 1DL

T: 020 3617 1333

E: enquiries@laminghope.com