

e sales@laminghope.com  
t 020 3617 1333

**L&H**residential  
laminghope.com sales & lettings



## Bullhead Road, WD6

**£425,000**

- Mid terraced house with side access
- Three bedrooms
- Two receptions
- Separate kitchen
- Potential to add driveway (stpp)
- Potential to extend to the rear (stpp)
- South facing garden with side access + Store room
- Short walk to local shops and transport
- 0.4 miles from Yavneh College
- One mile from Elstree & Borehamwood train station







L&H Residential are proud to bring to the market this spacious mid terraced house located just one mile from Elstree and Borehamwood train station and 0.4 miles from Yavneh College. The accommodation comprises of; three bedrooms, family bathroom, two receptions and a separate kitchen. As well as being excellently located the property boasts other great features such as ; south facing garden with side access, store room in garden, potential to extend to the rear (stpp) and potential to add a driveway (stpp).

An early viewing is advised



## Bullhead Road, WD6

**£425,000**

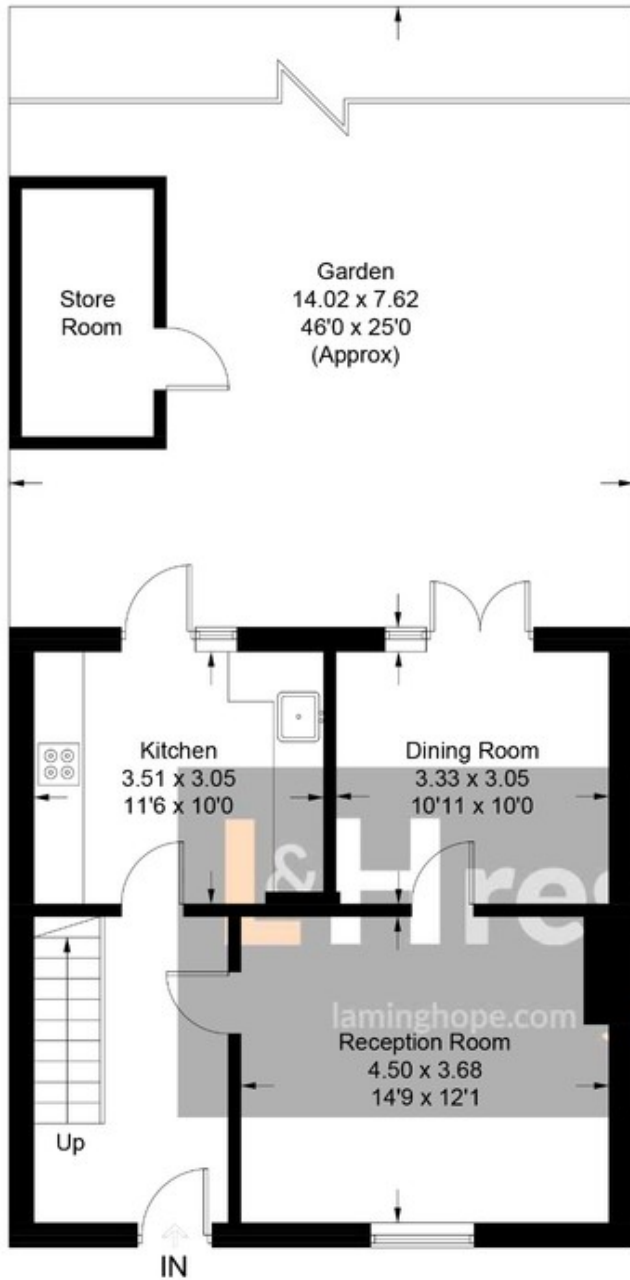
A spacious three bedroom mid terraced house located 0.4 miles from Yavneh College and one mile from Elstree and Borehamwood train station.



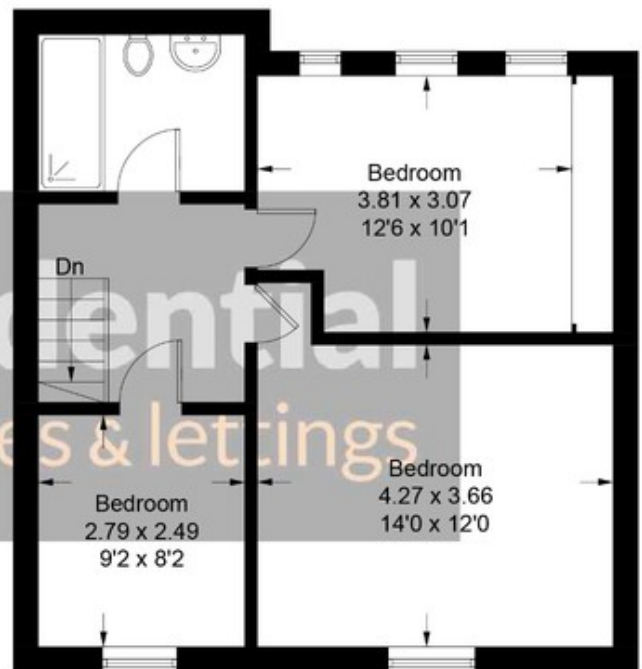


# Bullhead Road, WD6

Approximate Gross Internal Area = 97.6 sq m / 1050 sq ft  
(Excluding Store Room )



Ground Floor



First Floor

Illustration for identification purposes only, measurements are approximate,  
not to scale. floorplansUsketch.com © (ID671530)

12 Shenley Road, Borehamwood, Hertfordshire, WD6 1DL

T: 020 3617 1333

E: [enquiries@laminghope.com](mailto:enquiries@laminghope.com)