

e sales@laminghope.com
t 020 3617 1333

L&Hresidential
laminghope.com sales & lettings



Cedar Close, Borehamwood, WD6

£249,950

- CASH BUYERS ONLY!
- 44 YEAR LEASE
- Direct access to private patio and communal gardens
- 0.4 Miles from Elstree & Borehamwood train station
- Eat in kitchen
- CHAIN FREE
- 5 minute walk to high street

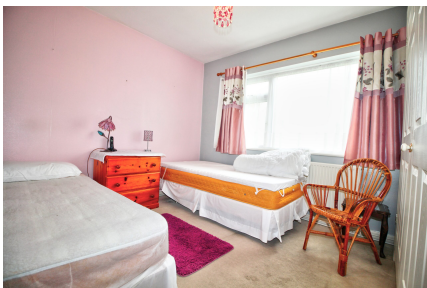




CASH BUYERS ONLY! 44 YEAR LEASE!

L&H Residential are proud to bring to the market this well presented ground floor maisonette located just 0.4 miles from Elstree & Borehamwood and just a 5 minute walk to the high street. The accommodation comprises of two double bedrooms, lounge, eat in kitchen and a family bathroom. The property also benefits from own front door, direct access to communal gardens, small private patio, an abundance of storage and being sold CHAIN FREE.

Early viewing is advised.



Cedar Close, Borehamwood, WD6

£249,950

CASH BUYERS ONLY! 44YEAR LEASE!

A well presented two double bedroom ground floor maisonette located just 0.4 miles from Elstree & Borehamwood train station and a 5 minute walk to the high street.



Cedar Close, WD6

Approximate Gross Internal Area = 60.7 sq m / 653 sq ft



Ground Floor

Illustration for identification purposes only, measurements are approximate, not to scale. floorplansUsketch.com © (ID865833)

12 Shenley Road, Borehamwood, Hertfordshire, WD6 1DL

T: 020 3617 1333

E: enquiries@laminghope.com