

e sales@laminghope.com
t 020 3617 1333

L&Hresidential
laminghope.com sales & lettings



Clydesdale Close, Borehamwood, WD6

£475,000

- Beautifully presented and extended terraced house
- Three bedrooms + Loft room
- Two receptions
- Kitchen/diner with underfloor heating
- Downstairs guest W.C
- Outbuildings for storage + Utility room
- Off street parking
- Within easy reach of the A1
- Short walk to local shops, local transport and schools





L&H Residential are proud to bring to the market this beautifully presented and extended terraced house located a short walk from local schools, shops and bus routes as well as in easy reach of the A1. The accommodation comprises of; three bedrooms, loft room, two receptions, utility room, kitchen/diner, porch and a downstairs guest W.C. The property has other great features including; off street parking, outbuildings for storage, underfloor heating in kitchen/diner, private garden, overlooks a park and being sold CHAIN FREE.

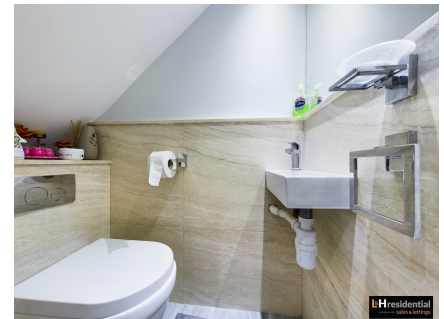
Lounge

Kitchen

Dining Area

Bedrooms

Bathrooms



Clydesdale Close, Borehamwood, WD6

£475,000

A very well presented and extended three bedroom terraced house with off street parking located a short walk from local schools, shops and bus routers and within easy reach of the A1.

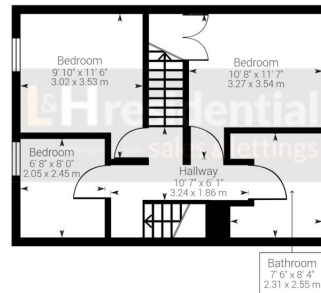




Ground Floor



1st Floor



2nd Floor



Approximate net internal area: 1262.53 ft² / 117.29 m²

While every attempt has been made to ensure accuracy, all measurements are approximate, not to scale. This floor plan is for illustrative purpose only and should be used as such by any prospective tenant or purchaser.

Powered by Giraffe360

Laminghope

12 Shenley Road, Borehamwood, Hertfordshire, WD6 1DL

T: 020 3617 1333

E: enquiries@laminghope.com