

e sales@laminghope.com
t 020 3617 1333

L&Hresidential
laminghope.com sales & lettings



Coleridge Way, Borehamwood, WD6

£1,300 pcm

- Spacious modern first floor apartment (892sqft)
- Two double bedrooms
- Two Bathrooms (one en-suite)
- Spacious L shaped lounge/diner
- Modern Kitchen
- An underground parking space
- 0.3 miles to Elstree and Borehamwood Train Station
- Communal garden
- Juliet balcony
- Furnished + Move in 1/10/21





L&H Residential are proud to bring onto the market this spacious 892 sq ft first floor modern apartment in the extremely popular development off Shakespeare Drive just 0.3 miles from Elstree and Borehamwood Train Station and a short stroll to the local shops, places of worship and Yavneh College. The accommodation comprises of two double bedrooms, two bathrooms (one en-suite), modern kitchen, L shaped lounge/diner with a Juliet balcony and spacious entrance hallway. The property boasts many great features as well as being conveniently located the property comes with a underground parking space, a very well maintained communal garden and having an abundance of natural light throughout the apartment.

Furnished
Move in 1/10/21

Living Room

Kitchen

Bedrooms

Bathrooms



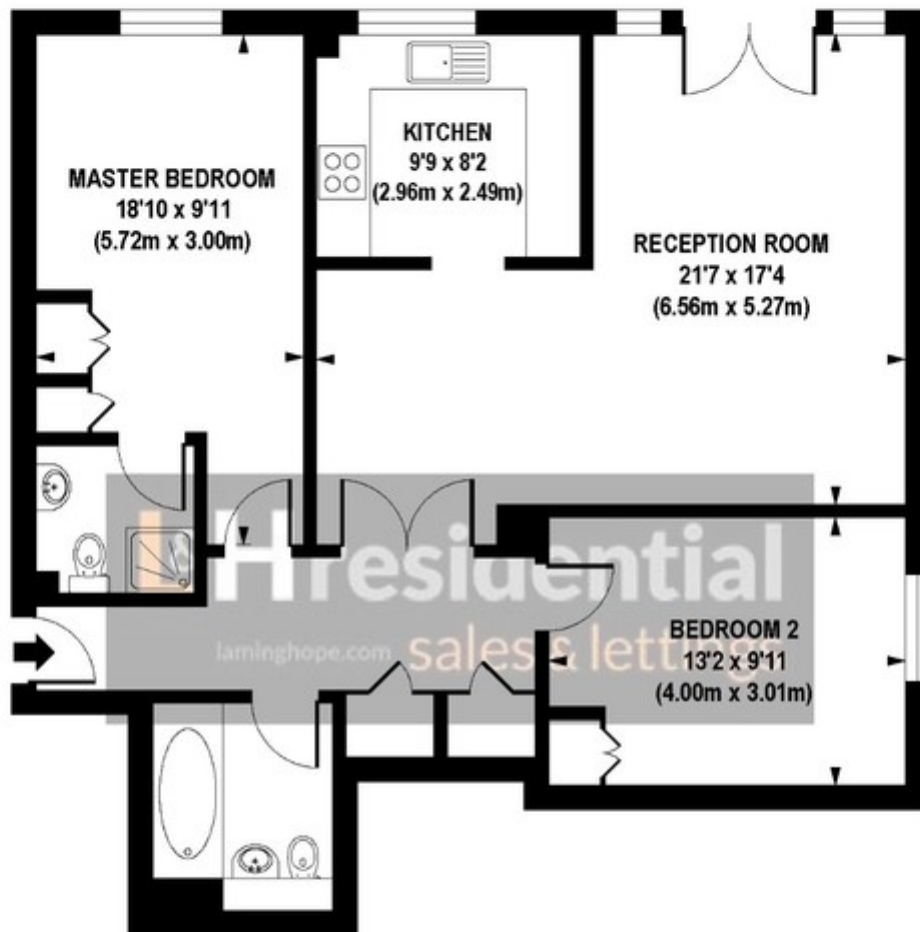
Coleridge Way, Borehamwood, WD6

£1,300 pcm

A modern and spacious first floor two double bedroom two bathroom flat







FIRST FLOOR

APPROX. GROSS INTERNAL FLOOR AREA 892 sq. ft / 82.90 sq. m

Floorplan is for illustrative purposes only and is not to scale.
Every attempt has been made to ensure the accuracy of the floorplan shown, however all measurements, fixtures, fittings and data shown are an approximate interpretation for illustrative purposes only.
Liability for errors, omissions or mis-statement through negligence or otherwise is hereby excluded.

CP CREATIVE
PROPERTY MARKETING

Laminghope

12 Shenley Road, Borehamwood, Hertfordshire, WD6 1DL

T: 020 3617 1333

E: enquiries@laminghope.com