

e sales@laminghope.com  
t 020 3617 1333

**L&H**residential  
laminghope.com sales & lettings



## Crown Road, Borehamwood, WD6

**£649,950**

- Largely extended semi detached house
- Three bedrooms
- Four receptions (one can be used as a fourth bedroom)
- Two bathrooms (one downstairs)
- Off street parking for two cars
- Private garden with side access



L&H Residential are proud to bring to the market this largely extended semi detached house located a short walk from the local schools, shops and bus routes. The accommodation comprises of three bedrooms, four receptions (one can be used as a fourth bedroom), kitchen and two bathrooms (one downstairs). The property benefits from off street parking for two cars and a private rear garden with side access.

An early viewing is advised



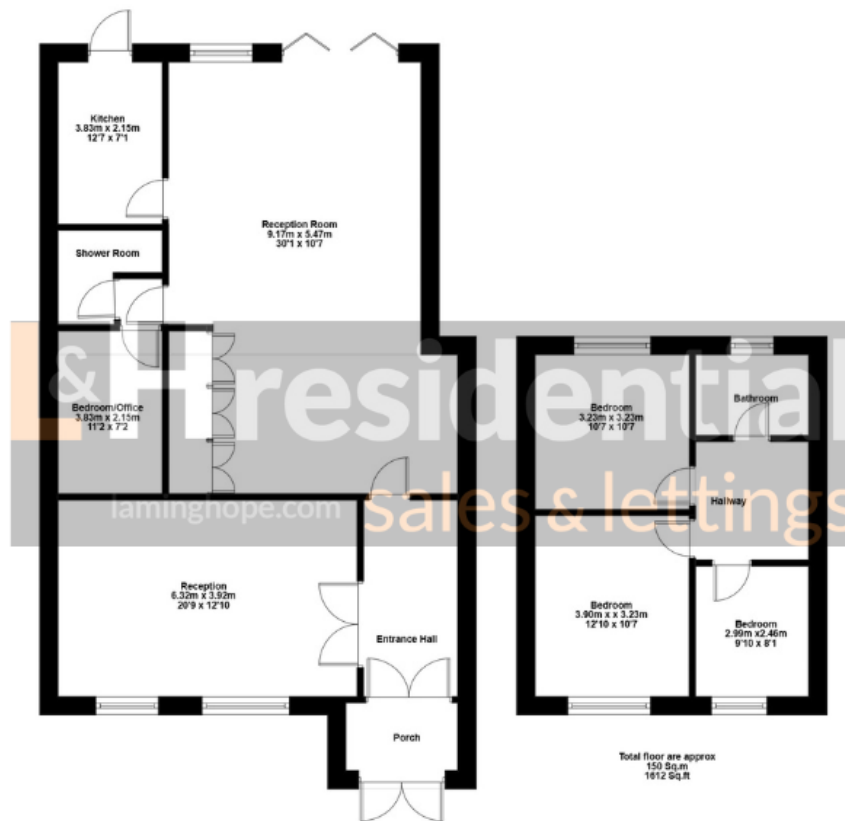


# Crown Road, Borehamwood, WD6

**£649,950**

A largely extended three bedroom semi detached house with off street parking for two cars.





## Laminghope

12 Shenley Road, Borehamwood, Hertfordshire, WD6 1DL

T: 020 3617 1333

E: [enquiries@laminghope.com](mailto:enquiries@laminghope.com)