

e sales@laminghope.com
t 020 3617 1333

L&Hresidential
laminghope.com sales & lettings



Croxdale Road, Borehamwood, WD6

£1,550 pcm

- Well presented end of terrace house
- Three bedrooms
- Guest WC
- 62ft south facing garden
- 0.6 miles to Elstree and Borehamwood Train Station
- Opposite a Synagogue and Aberford Park
- Unfurnished + Move in date 10/8/22





L&H Residential are proud to bring to the market a well presented three bedroom end of terrace located on a quiet turning off Theobald Street within easy reach of local shops. The accommodation comprises of a spacious lounge, modern kitchen, downstairs WC, three good sized bedrooms, and a family bathroom. The property boasts many great features including; a private front and rear (south facing) garden, being located opposite a Synagogue and Aberford Park and just 0.6 miles away from Elstree and Borehamwood Train Station.

Move in 10th August 2022

Unfurnished

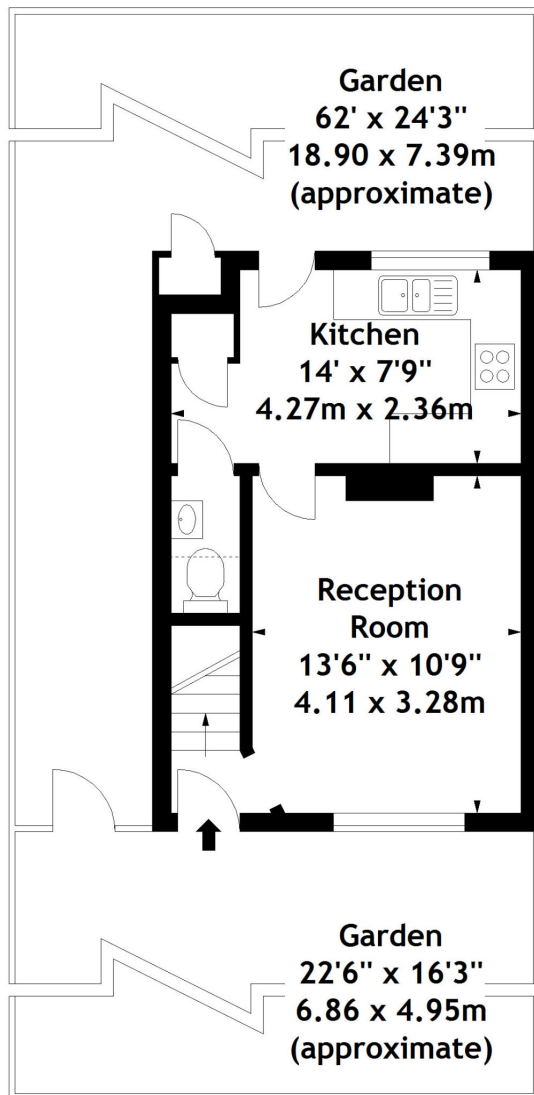


Croxdale Road, Borehamwood, WD6

£1,550 pcm

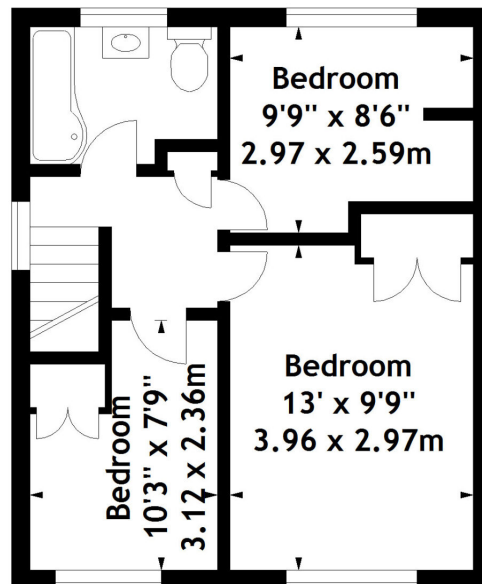
A well presented three bedroom end of terrace house located just 0.6 miles away from Elstree and Borehamwood Train Station.





Ground Floor

Croxdale Road, WDS
Approx. Gross Internal Area
686 Sq Ft - 63.73 Sq M



First Floor

Measured in accordance with RICS guidelines. Every attempt is made to ensure accuracy, however all measurements are approximate. This floor plan is for illustrative purposes only and is not to scale.
© Datography Ltd 2015
Photographs * Floorplans * Virtual Tours
Tel: 0845 643 4401 www.datography.com

12 Shenley Road, Borehamwood, Hertfordshire, WD6 1DL

T: 020 3617 1333

E: enquiries@laminghope.com