

e sales@laminghope.com
t 020 3617 1333

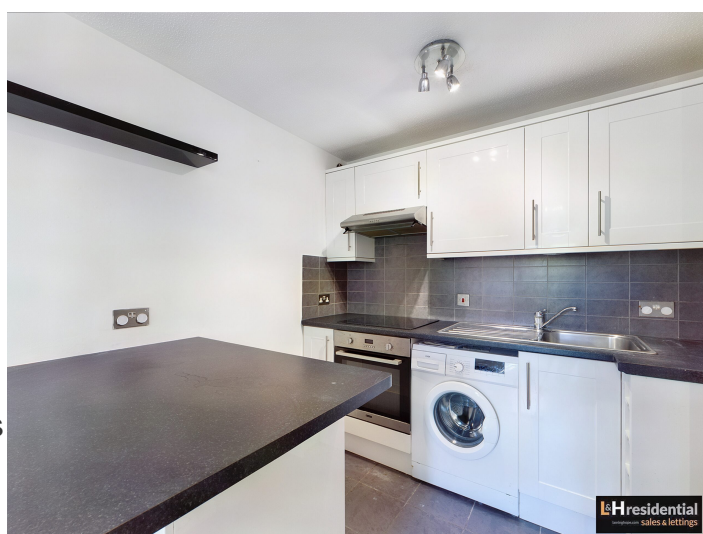
L&Hresidential
laminghope.com sales & lettings



Danziger Way, Borehamwood, WD6

£900 pcm

- First floor flat
- One bedroom
- Short walk to local schools, shops and places of worship
- Unfurnished
- Move in date 30/07/21





L&H Residential are proud to bring to the market this well presented first floor flat The accommodation comprises of; bedroom, kitchen/living area and a family bathroom. The property also benefits from having a off street parking space.

Unfurnished
Move in 30/7/21

Kitchen

Reception

Bathroom

Bedroom



Danziger Way, Borehamwood, WD6

£900 pcm

A well presented one bedroom first floor flat with off street parking located a short walk from local schools, shops and places of worship.

Danziger Way, WD6

Approximate Gross Internal Area = 38.9 sq m / 419 sq ft

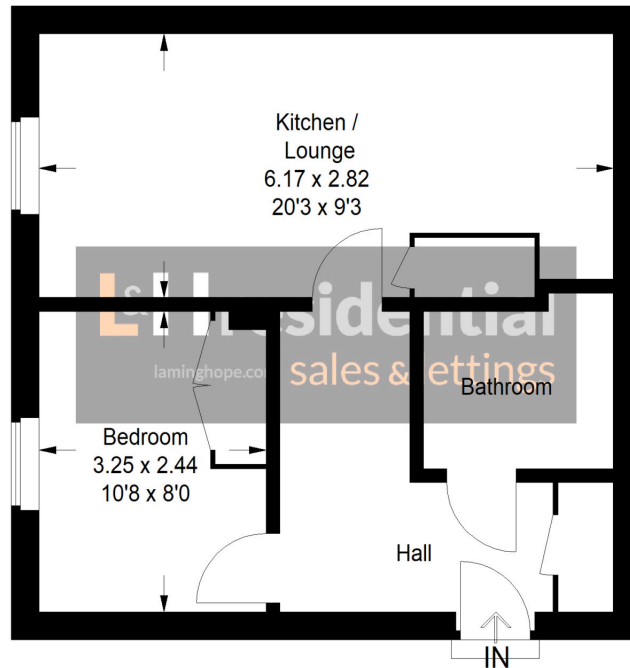


Illustration for identification purposes only, measurements are approximate, not to scale.
FloorplansUsketch.com © 2021 (ID763913)

Laminghope

12 Shenley Road, Borehamwood, Hertfordshire, WD6 1DL

T: 020 3617 1333

E: enquiries@laminghope.com