

e sales@laminghope.com

t 020 3617 1333

L&Hresidential
laminghope.com sales & lettings



Danziger Way, Borehamwood, WD6

£449,950

- Beautifully presented end of terrace house
- Three bedrooms
- Kitchen/diner
- Potential to extend to side and rear (stpp)
- Studio Way development
- Allocated parking space
- Short walk to local schools, shops and bus routes





L&H Residential are proud to bring to the market this beautifully presented end of terraced house located in the ever so popular Studio Way development just a short walk from local schools, shops and bus routes. The accommodation comprises of three bedrooms, family bathroom, double aspect lounge and a kitchen/diner. The property also benefits from an allocated parking space, underfloor heating in lounge and bathroom and side and rear gardens offering fantastic potential to extend the property (stpp).

An early viewing is advised

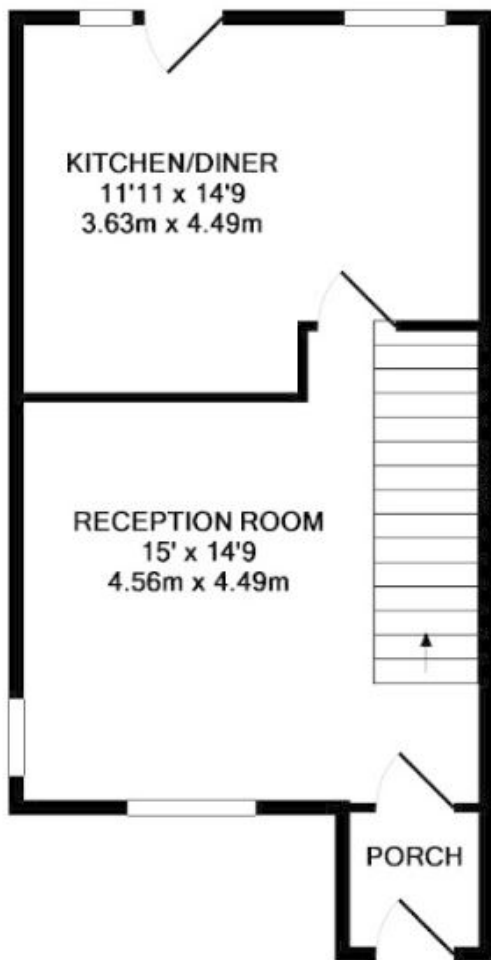


Danziger Way, Borehamwood, WD6

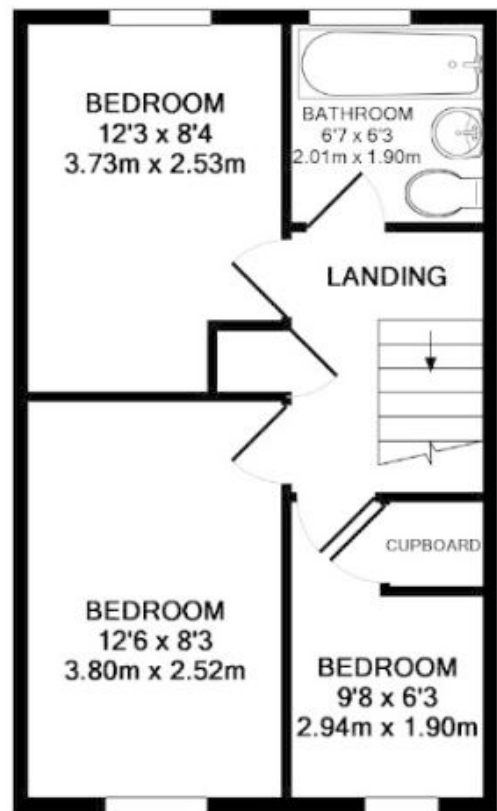
£449,950

A beautifully presented three bedroom end of terrace house with an allocated parking space located in the ever so popular Studio Way development





GROUND FLOOR
APPROX. FLOOR
AREA 35.8 SQ.M.
(386 SQ.FT.)



1ST FLOOR
APPROX. FLOOR
AREA 33.8 SQ.M.
(364 SQ.FT.)

DANZIGER WAY, BOREHAMWOOD, WD6 5DB
TOTAL APPROX. FLOOR AREA 69.6 SQ.M. (749 SQ.FT.)

Laminghope

12 Shenley Road, Borehamwood, Hertfordshire, WD6 1DL

T: 020 3617 1333

E: enquiries@laminghope.com