

e sales@laminghope.com  
t 020 3617 1333

**L&H**residential  
laminghope.com sales & lettings



## Danziger Way, Borehamwood, WD6

£1,550 pcm

- Ground floor Maisonette
- Two Bedrooms
- Separate kitchen (Brand new Kitchen being fitted before move in)
- Private own entrance & Direct access to own garden
- Studio Way development
- Ample street parking
- Unfurnished
- Available Now





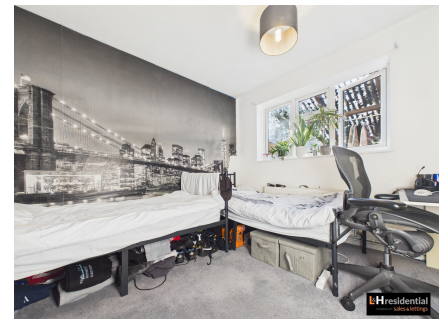


L&H Residential are proud to be presenting this well-proportioned two-bedroom ground-floor maisonette, located within the sought-after Studio Way development. This property is ideal for those seeking comfortable and convenient living, offering its own private entrance for added privacy and ease of access.

Inside, the flat features two generously sized bedrooms, providing ample space for sharers, couples, or those in need of a guest room or home office. The spacious living room is bright and inviting, making it perfect for relaxing or entertaining guests. The separate kitchen is a standout feature, with a brand new kitchen being fitted prior to move-in (ensuring a modern and functional space for cooking and dining).

The property is offered unfurnished, allowing you to personalise the space to your own taste and requirements. Other benefits include ample street parking, making it convenient for residents and visitors alike.

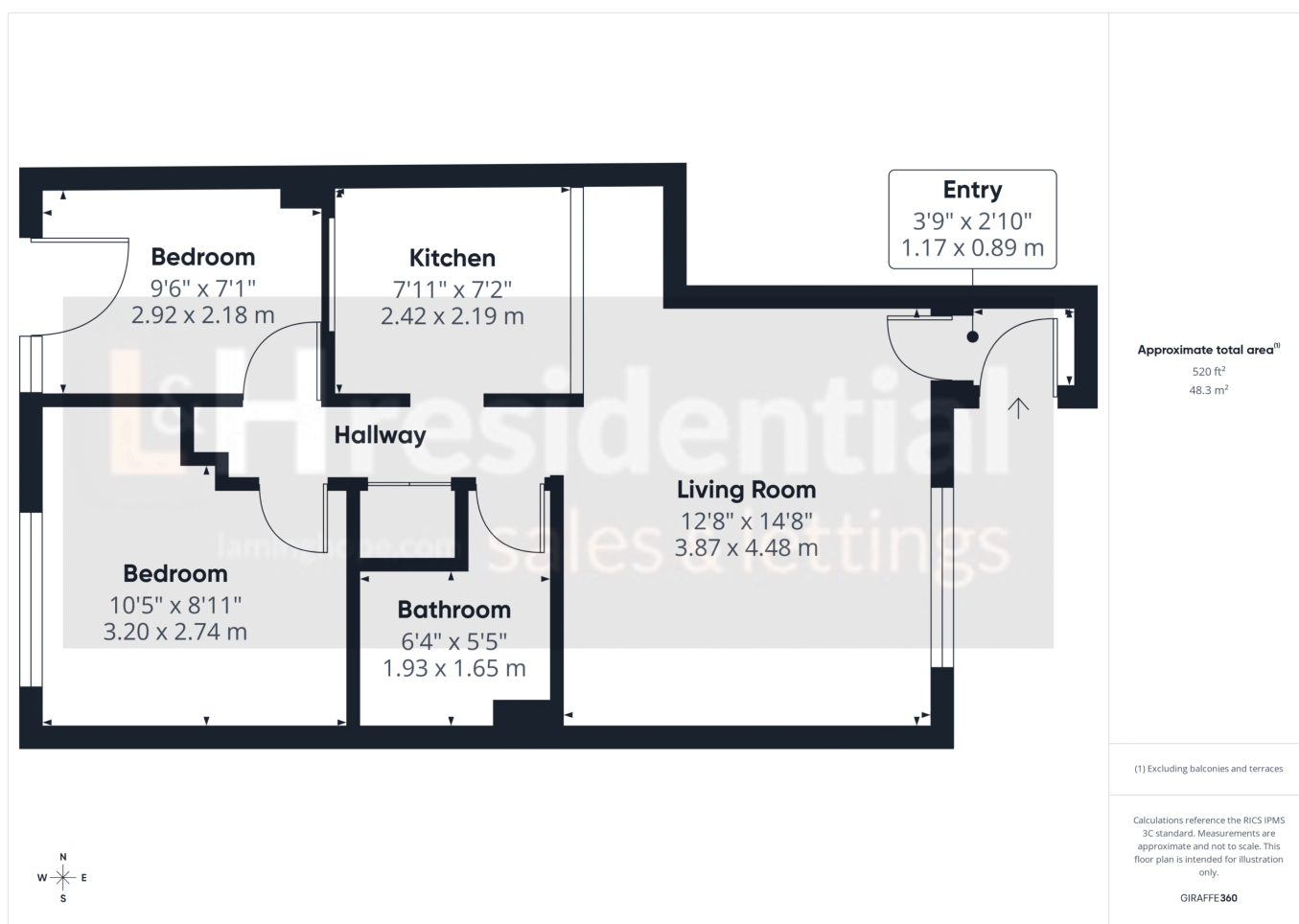
Situated in a popular residential development, this maisonette is well-positioned for access to local amenities and transport links. Available now, this property presents an excellent opportunity for those looking to move without delay. Early viewing is highly recommended to appreciate the space and quality on offer. Contact us today to arrange your appointment.



# Danziger Way, Borehamwood, WD6

**£1,550 pcm**

Spacious 2-bed ground-floor maisonette in Studio Way. Private entrance, new kitchen, unfurnished, ample parking. Close to amenities and transport. Available now. Early viewing advised.



## Laminghope

12 Shenley Road, Borehamwood, Hertfordshire, WD6 1DL

T: 020 3617 1333

E: [enquiries@laminghope.com](mailto:enquiries@laminghope.com)