

e sales@laminghope.com  
t 020 3617 1333

**L&H**residential  
laminghope.com sales & lettings



## Danzinger Way, WD6

£850 pcm

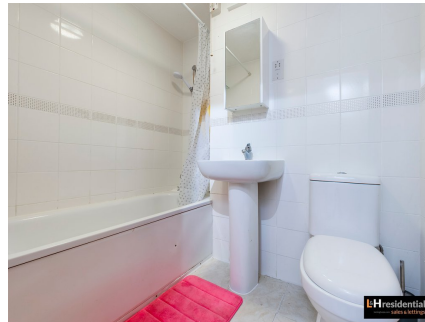
- First floor flat
- One bedroom
- Off street parking
- Short walk to local schools, shops and places of worship
- Unfurnished
- Move in date 20/11/20





L&H Residential are proud to bring to the market this well presented first floor flat located a short walk from local shops, schools and places of worship. The accommodation comprises of ; bedroom, kitchen/living area and a family bathroom. The property also benefits from having off street parking space.

Unfurnished  
Move in 20/11/20



## Danzinger Way, WD6

**£850 pcm**

A well presented one bedroom first floor flat with off street parking located a short walk from local schools, shops and places of worship.



# Danzinger Way, WD6

Approximate Gross Internal Area = 34 sq m / 366 sq ft



Illustration for identification purposes only, measurements are approximate, not to scale. floorplansUsketch.com © (ID707653)

## Laminghope

12 Shenley Road, Borehamwood, Hertfordshire, WD6 1DL  
T: 020 3617 1333

E: [enquiries@laminghope.com](mailto:enquiries@laminghope.com)