

e sales@laminghope.com
t 020 3617 1333

L&Hresidential
laminghope.com sales & lettings



Eaton Way, Templeton Court Eaton Way, WD6

£1,550 pcm

- Modern second floor (top floor) flat
- Two double bedrooms
- Two bathrooms (one ensuite)
- Allocated parking space
- Communal garden
- 0.8 miles to Elstree and Borehamwood Train Station
- Short walk to shops, schools and Synagogue
- Views of open fields
- Ample visitor parking spaces
- Available 16th June 2025 & Unfurnished





L&H Residential are proud to present this modern second-floor flat offers a delightful living space with two well-proportioned double bedrooms, two bathrooms (including an ensuite), and an allocated parking space. The property boasts picturesque views of open fields, creating a serene atmosphere for its residents.

Located just 0.8 miles from Elstree and Borehamwood Train Station, the property enjoys excellent transport connections, making commuting a breeze. Nearby amenities such as shops, schools, and a Synagog are within a short walk, ensuring convenience for daily needs.

Residents will appreciate the communal garden and ample visitor parking spaces available on-site. The property will be available for occupancy on the 16th of June 2025 and will be offered unfurnished, providing a blank canvas for personalisation.

In summary, this two-bedroom flat presents a fantastic opportunity for comfortable living in a well-connected area, ideal for individuals or couples seeking a modern home with convenient access to amenities and transport links.

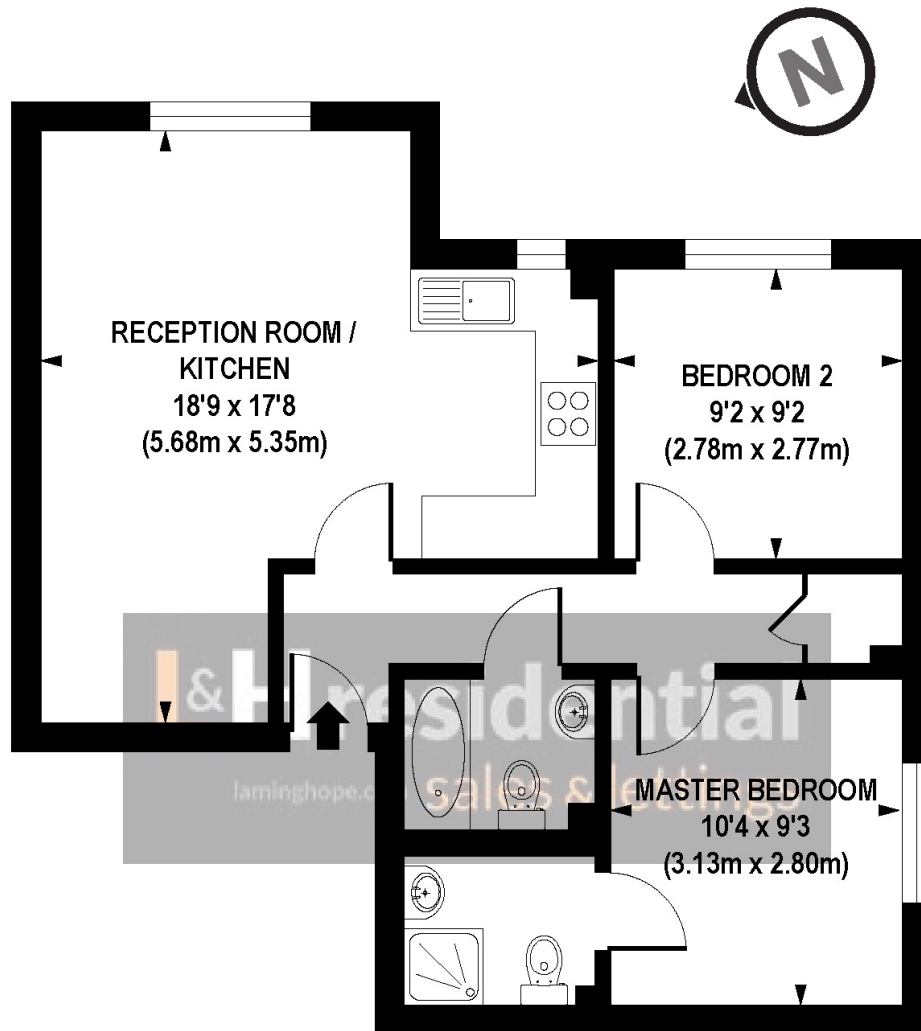


**Eaton Way,
Templeton Court
Eaton Way, WD6**

£1,550 pcm

Modern 2nd-floor flat with 2 double beds, 2 baths, and allocated parking. Picturesque views of open fields. Great transport links and amenities nearby. Communal garden. Available unfurnished from June 16, 2025. Ideal for individuals or couples seeking a convenient, well-connected home.





GROUND FLOOR

APPROX. GROSS INTERNAL FLOOR AREA 578 sq. ft / 53.68 sq. m

Floorplan is for illustrative purposes only and is not to scale.
Every attempt has been made to ensure the accuracy of the floorplan shown, however all measurements, fixtures, fittings and data shown are an approximate interpretation for illustrative purposes only.
Liability for errors, omissions or mis-statement through negligence or otherwise is hereby excluded.

CP CREATIVE
PROPERTY MARKETING

Laminghope

12 Shenley Road, Borehamwood, Hertfordshire, WD6 1DL

T: 020 3617 1333

E: enquiries@laminghope.com