

e sales@laminghope.com
t 020 3617 1333

L&Hresidential
laminghope.com sales & lettings



Eldon Avenue, Borehamwood, WD6

£239,950

- Ground floor flat
- One bedroom
- Separate kitchen
- Private garden
- Outbuilding for storage
- 0.6 miles from Elstree and Borehamwood Train Station
- CHAIN FREE





L&H Residential are proud to bring to the market this well presented ground floor flat. The accommodation comprises of; bedroom, bathroom, kitchen and living room. The property also benefits from; private garden, outbuilding for storage and being sold CHAIN FREE.

An early viewing is advised

Kitchen

Lounge

Bedroom

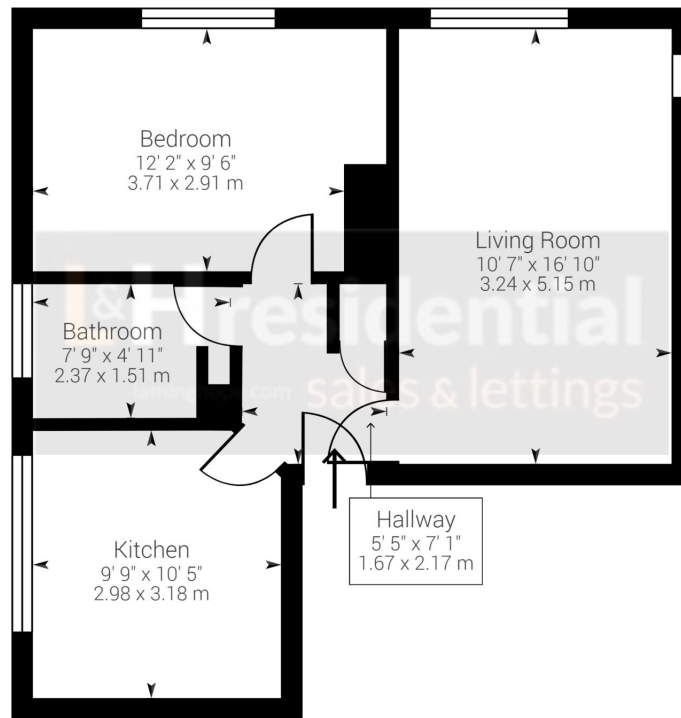
Bathroom



Eldon Avenue, Borehamwood, WD6

£239,950

A well presented one bedroom ground floor flat with a private garden located just 0.6 miles from Elstree & Borehamwood train station.



Approximate net internal area: 493.77 ft² / 45.87 m²

While every attempt has been made to ensure accuracy, all measurements are approximate, not to scale. This floor plan is for illustrative purpose only and should be used as such by any prospective tenant or purchaser.

Powered by Giraffe360

Laminghope

12 Shenley Road, Borehamwood, Hertfordshire, WD6 1DL

T: 020 3617 1333

E: enquiries@laminghope.com