

e sales@laminghope.com
t 020 3617 1333

L&Hresidential
laminghope.com sales & lettings



Fairburn Close, Borehamwood, WD6

£475,000

- Semi detached house
- Three double bedrooms
- Three reception rooms
- Downstairs guest W.C
- Kitchen/diner
- Large private garden
- CHAIN FREE
- Short walk to local shops, schools and bus routes
- 0.9 miles from Elstree & Borehamwood train station





L&H Residential are proud to bring to the market this spacious semi detached house located just 0.9 miles from Elstree & Borehamwood train station and a short walk from local shops, schools and bus routes. The accomodation comprises of three double bedrooms (one with in built shower), kitchen/diner, downstairs guest W.C, three reception rooms and a utility room. The property also benefits from; being sold CHAIN FREE, potential to extend to rear and into loft (stpp) and private garden with large storage sheds.

An early viewing is advised



Fairburn Close, Borehamwood, WD6

£475,000

A three double bedroom semi detached house located just 0.9 miles from Elstree & Borehamwood train station.





Fairburn Close, WD6

Approximate Gross Internal Area = 102.9 sq m / 1108 sq ft

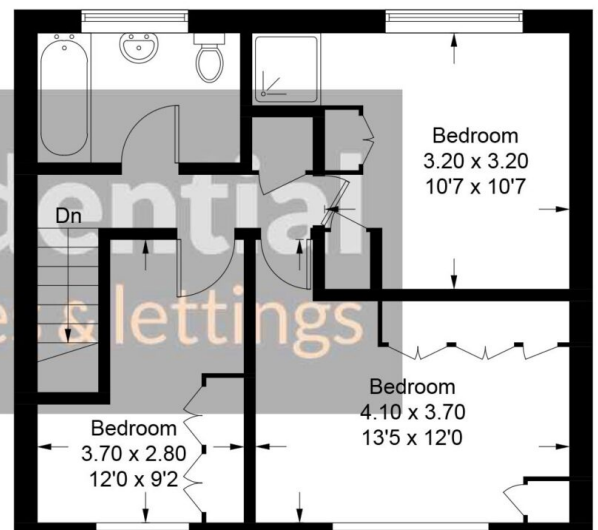
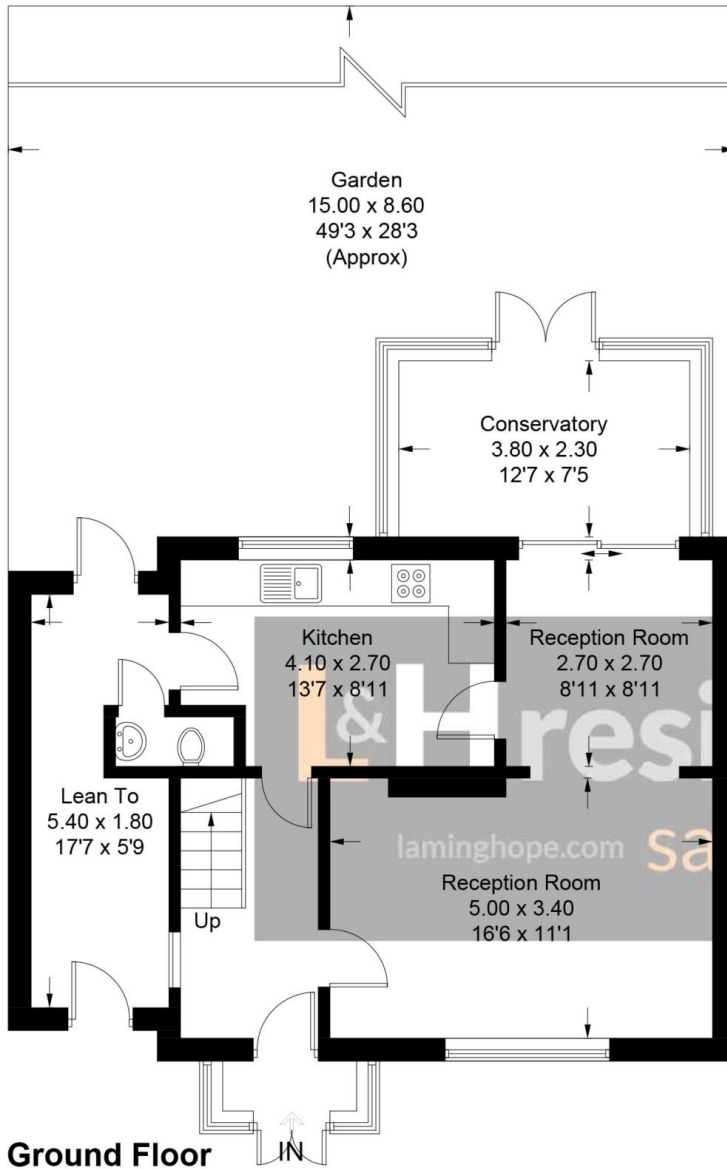


Illustration for identification purposes only, measurements are approximate, not to scale. floorplansUsketch.com © (ID797146)

12 Shenley Road, Borehamwood, Hertfordshire, WD6 1DL

T: 020 3617 1333

E: enquiries@laminghope.com