

e sales@laminghope.com  
t 020 3617 1333

**L&H**residential  
laminghope.com sales & lettings



## Furzehill Road, Borehamwood, WD6

**£685,000**

- Extended Edwardian semi detached house
- Three bedrooms + Office
- Two bathrooms
- Eat in kitchen
- Three reception rooms + Utility room
- Downstairs guest W.C
- Mature garden with side access
- Off street parking
- Yavneh College catchment area
- 0.2 Miles from Elstree & Borehamwood train station







An extended Edwardian semi detached house located just 0.2 miles from Elstree & Borehamwood train station and a short walk to local schools, shops and places of worship. The accommodation comprises of; three bedrooms, two bathrooms, Office, Eat in kitchen, three reception rooms, utility room and a downstairs guest W.C. The property boasts many great features such as; high ceilings, off street parking, mature private garden with side access and being located in the catchment area for Yavneh College.

**Bedrooms**

**Receptions**

**Bathrooms**

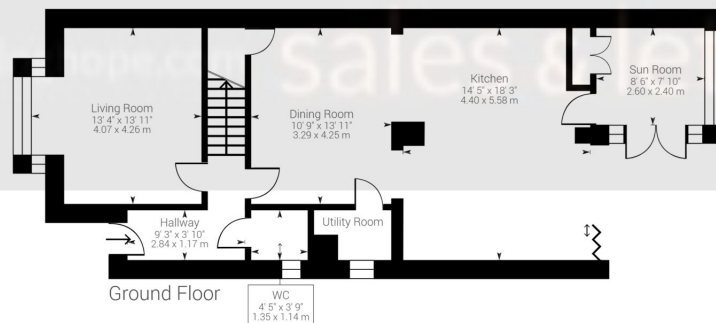
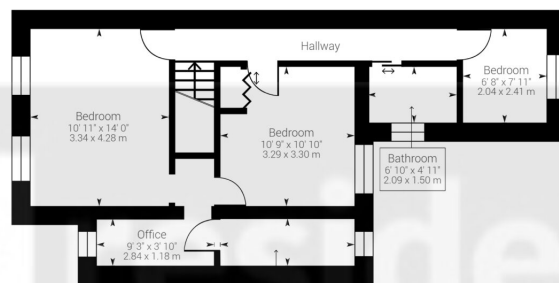


## Furzehill Road, Borehamwood, WD6

**£685,000**

An extended Edwardian three bedroom semi detached house located just 0.2 miles from Elstree & Borehamwood train station and a short walk to local schools (Yavneh College), shops and places of worship.





Approximate net internal area: 1309.34 ft² / 121.64 m²

While every attempt has been made to ensure accuracy, all measurements are approximate, not to scale. This floor plan is for illustrative purpose only and should be used as such by any prospective tenant or purchaser.

Powered by Giraffe360

## Laminghope

12 Shenley Road, Borehamwood, Hertfordshire, WD6 1DL

T: 020 3617 1333

E: [enquiries@laminghope.com](mailto:enquiries@laminghope.com)