

e sales@laminghope.com
t 020 3617 1333

L&Hresidential
laminghope.com sales & lettings



Gateshead Road, Borehamwood, WD6

£349,950

- Duplex maisonette
- Four bedrooms
- Private own entrance
- Own front and back garden with direct access from property
- Downstairs guest WC
- Eat in kitchen
- Ideal for a growing family
- 0.9 miles from Elstree and Borehamwood train station
- Low outgoings





L&H Residential are proud to bring to the market this uniquely spacious duplex maisonette. The accommodation comprises of four bedrooms, family bathroom, eat in kitchen, lounge and a downstairs guest WC. The property boasts many great features including; own private entrance, private front and rear garden and low outgoings.

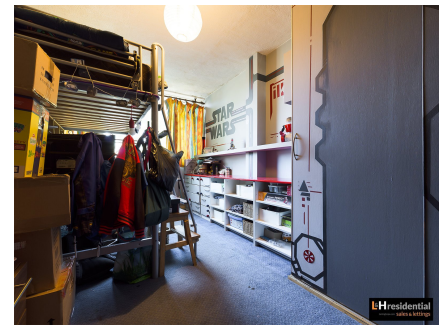
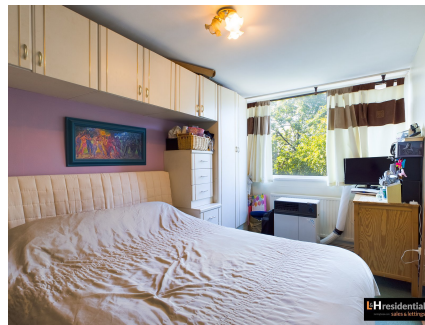
An early viewing is advised

Kitchen

Living Room

Bedrooms

Bathroom

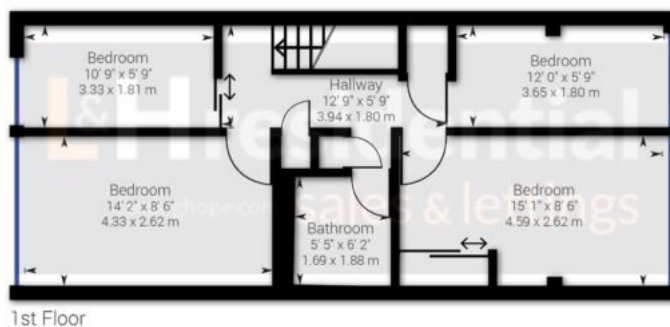
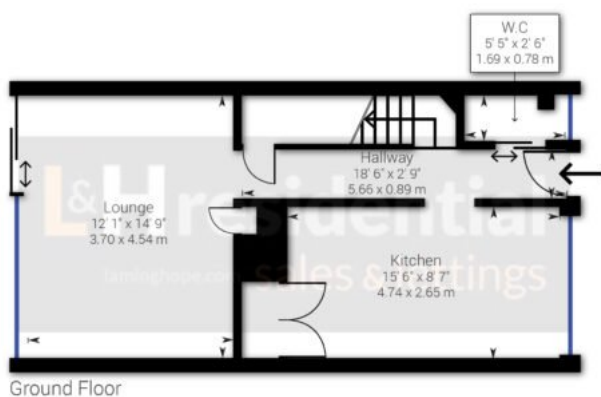


Gateshead Road, Borehamwood, WD6

£349,950

A spacious duplex four bedroom maisonette ideal for a growing family located just 0.9 miles from Elstree & Borehamwood train station and a short walk to local shops, schools, parks and bus routes.





Approximate net internal area: 936.35 ft² / 86.99 m²

While every attempt has been made to ensure accuracy, all measurements are approximate, not to scale. This floor plan is for illustrative purpose only and should be used as such by any prospective tenant or purchaser.

Powered by Giraffe360

Laminghope

12 Shenley Road, Borehamwood, Hertfordshire, WD6 1DL

T: 020 3617 1333

E: enquiries@laminghope.com