

e sales@laminghope.com
t 020 3617 1333

L&Hresidential
laminghope.com sales & lettings



Gateshead Road, WD6

£949,950

- Mock Tudor detached house
- Five double bedrooms
- Two bathrooms (one ensuite)
- Three receptions
- Integral garage
- Off street parking
- Private garden with side access on both sides
- Wired internet ports in all the rooms
- Underfloor heating in conservatory and ensuite
- Hardwood flooring on first and second floor





L&H Residential are proud to bring to the market this substantial mock Tudor detached house located within a short walk of local shops, schools and public transport. The accommodation comprises of; five double bedrooms, two bathrooms (one ensuite), three receptions, downstairs guest WC, spacious separate kitchen and an integral garage. The property boasts many great features including; off street parking, private garden with side access from both sides, hardwood flooring throughout first and second floor, wired internet ports in all the rooms and underfloor heating in the conservatory and ensuite.

An early viewing is advised



Gateshead Road, WD6

£949,950

A substantial mock Tudor detached house with five double bedroom two bathrooms located within a short walk of the local shops, schools and public transport.



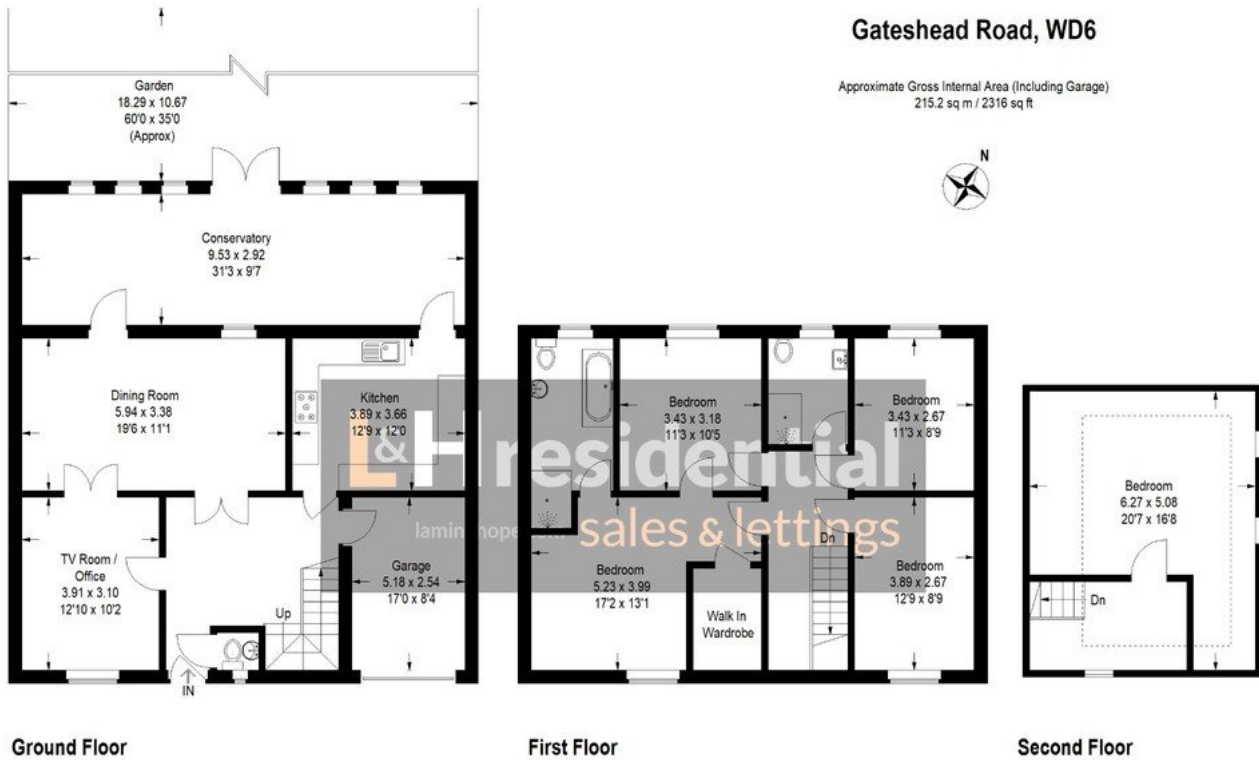


Illustration for identification purposes only, measurements are approximate, not to scale.
FloorplansUsketch.com © 2020 (ID672451)

Laminghope

12 Shenley Road, Borehamwood, Hertfordshire, WD6 1DL

T: 020 3617 1333

E: enquiries@laminghope.com