

e sales@laminghope.com

t 020 3617 1333

L&Hresidential
laminghope.com sales & lettings



Gills Hill Lane, WD7

£950,000

- 5 bedrooms
- 3 bathrooms
- 3 receptions

- 2200 square feet
- Off street parking for 3 cars
- Modern interior design
- Guest cloakroom
- 0.7 mile to Radlett station
- 3 minutes walk to Phillimore Park
- 5 minutes drive to M1



L&H Residential are proud to bring to the market an absolutely stunning home with 5 bedrooms, 3 bathrooms and 3 receptions, which has been meticulously designed with family in mind. Externally the property benefits from a resin driveway offering off street parking for 3 cars and a sunny rear garden of circa 85' x 35' with a large decked patio/entertaining area, lawn and mature trees.

Features include:

- *Large open plan dining / kitchen
- *Air con on ground and 2nd floor
- *Built in heated airing cupboard
- *Underfloor heating to master suite bathroom
- *5 ring induction hob
- *Large utility with door to garden
- *Full size fridge and freezer
- *Outdoor hot and cold taps front and back
- *Resin driveway
- *Large Composite decking area at rear
- *Option to make into 6 bedrooms

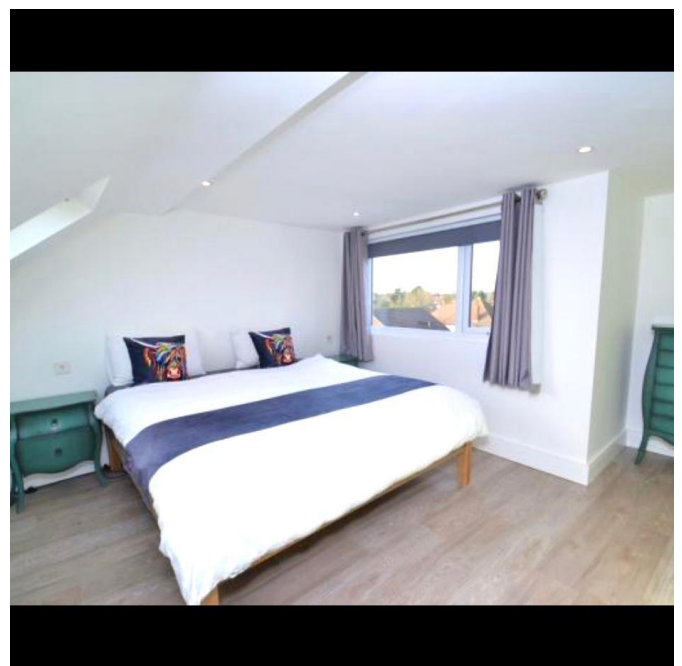
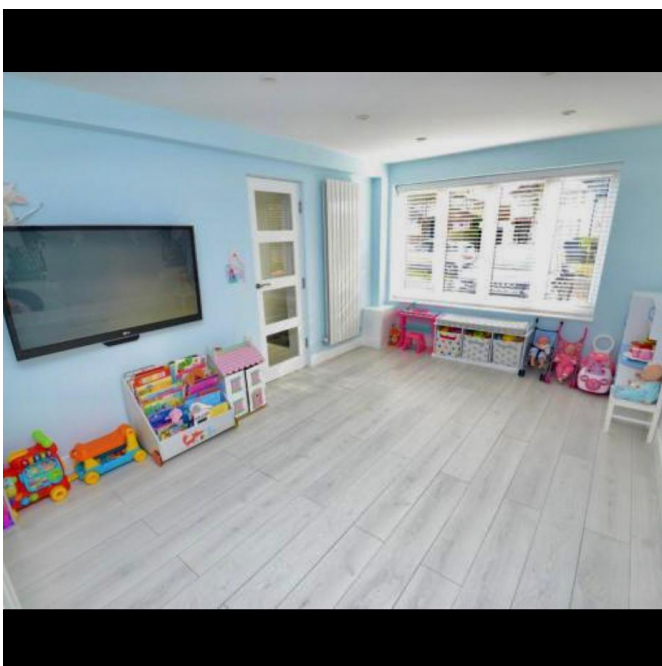
An early viewing is advised

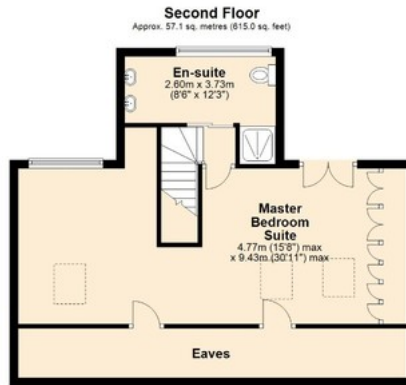
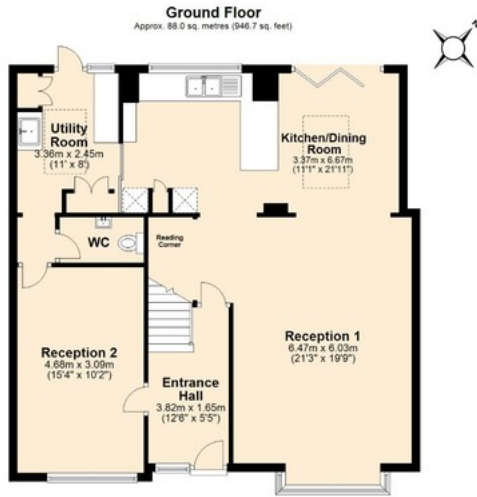


Gills Hill Lane, WD7

£950,000

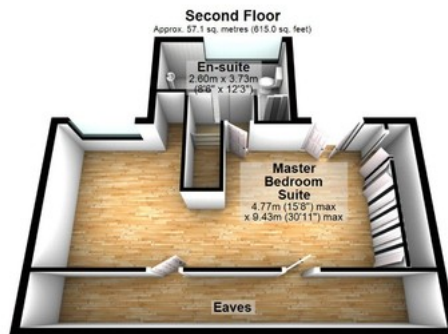
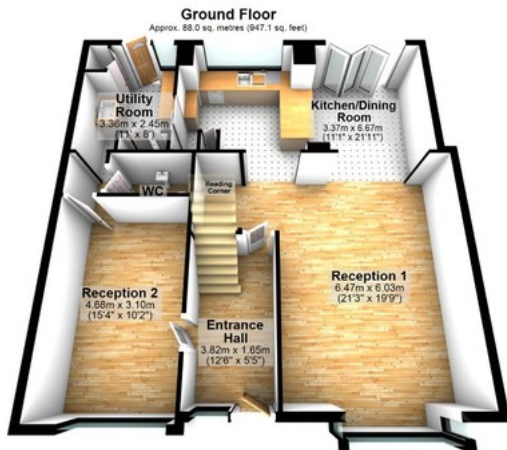
An absolutely stunning home with 5 bedrooms, 3 bathrooms and 3 receptions. Meticulously designed with family in mind and located just 0.7 miles from Radlett train station.





Total area: approx. 206.6 sq. metres (2224.2 sq. feet)

Disclaimer - Floor plan is for marketing purposes only and is to be used as a guide.
Plan produced using PlanUp.



Total area: approx. 206.7 sq. metres (2224.6 sq. feet)

Disclaimer - Floor plan is for marketing purposes only and is to be used as a guide.
Plan produced using PlanUp.

Laminghope

12 Shenley Road, Borehamwood, Hertfordshire, WD6 1DL

T: 020 3617 1333

E: enquiries@laminghope.com