

e sales@laminghope.com  
t 020 3617 1333

**L&H**residential  
laminghope.com sales & lettings



## Glenhaven Avenue, Borehamwood, WD6

**£485,000**

- Victorian terrace house
- Three bedrooms
- Through lounge & modern integrated kitchen
- Private garden
- Upstairs bathroom
- Potential to extend to rear (stpp)
- Turning off Shenley Road
- One minute walk to Elstree & Borehamwood train station

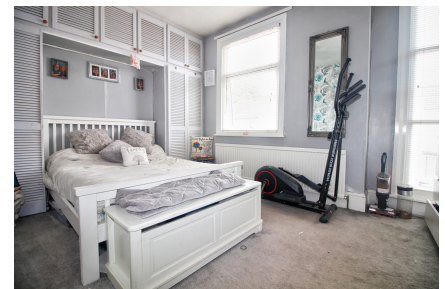






L&H Residential are proud to bring to the market this well presented Victorian terraced house located just 0.1 miles from Elstree & Borehamwood train station and situated on a turning off Shenley road just a stones throw away from the local shops and schools. The accomodation comprises of three bedrooms, family bathroom, through lounge and a spacious modern integrated kitchen. The property also benefits from a private rear garden and potential to extend to rear (sttpp).

An early viewing is advised

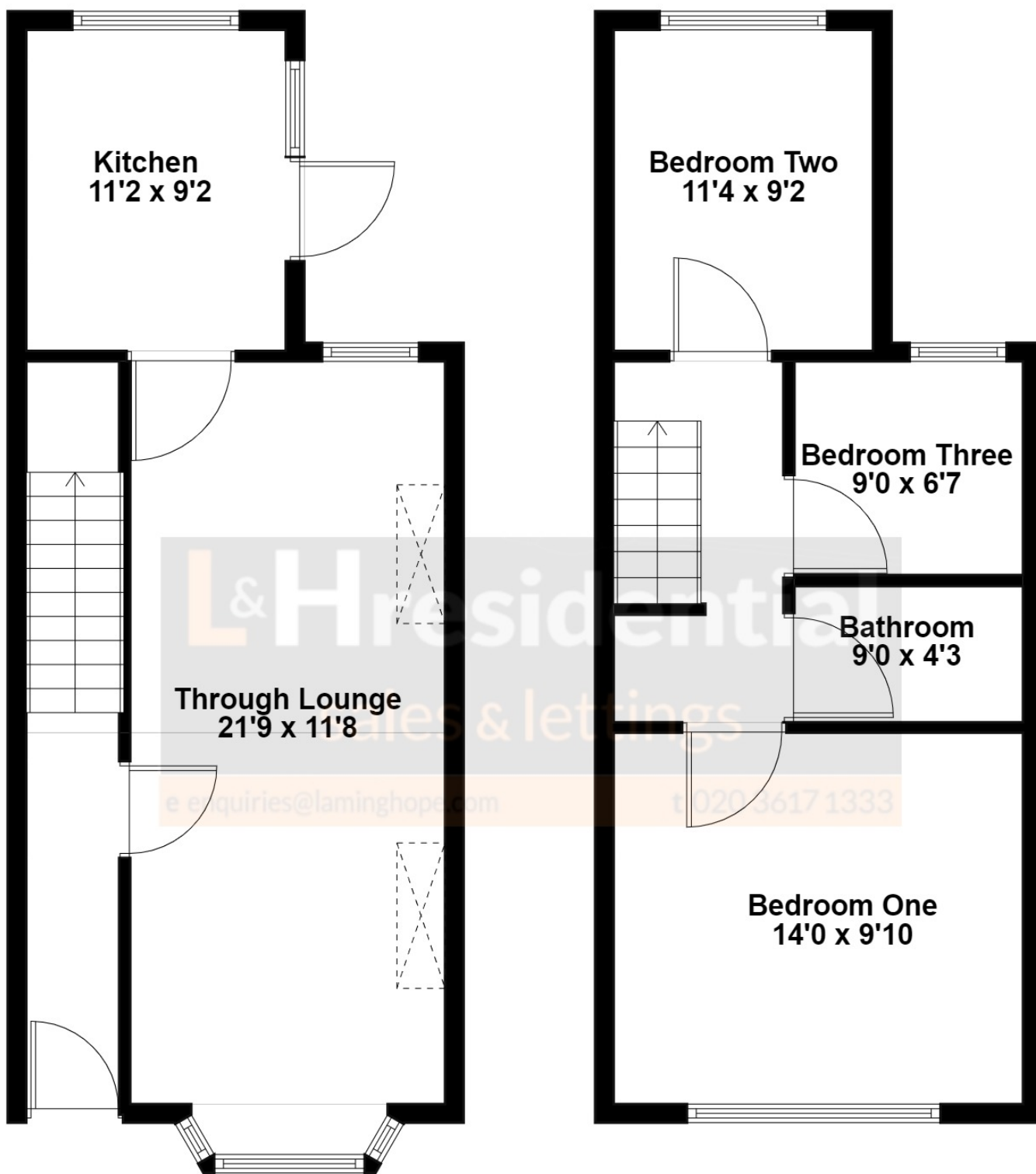


## Glenhaven Avenue, Borehamwood, WD6

**£485,000**

A well presented three bedroom Victorian terraced house located off a quiet turning on Shenley road just 0.1 miles from Elstree & Borehamwood train station.





**First Floor - 344 sq.feet**  
**Second Floor - 344 sq.feet**  
**Total - 688 sq.feet**

**Laminghope**

12 Shenley Road, Borehamwood, Hertfordshire, WD6 1DL  
T: 020 3617 1333

E: [enquiries@laminghope.com](mailto:enquiries@laminghope.com)