

e sales@laminghope.com  
t 020 3617 1333

**L&H**residential  
laminghope.com sales & lettings



## Grade Close, WD6

£1,200 pcm

- Modern first floor apartment
- Two double bedrooms
- Two Bathrooms (one en-suite)
- Modern kitchen
- Spacious lounge
- Balcony + Communal garden
- Parking
- 0.1 miles from Elstree and Borehamwood Train Station
- Available 11/2/21
- Unfurnished

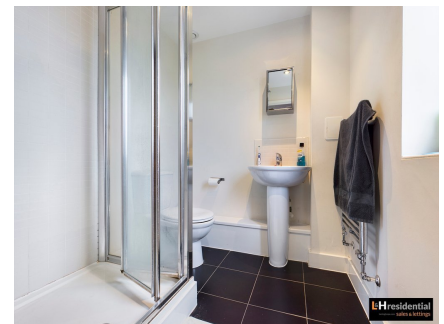
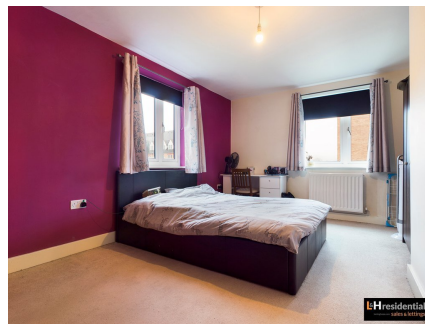
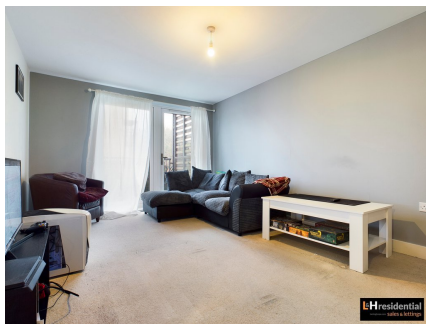






L&H Residential are proud to bring onto the market a very well presented, recently built modern apartment located on the First floor of Lawford Court just a stone's throw away from Elstree and Borehamwood Station and the town centre. The accommodation comprises of two double bedrooms, two bathrooms (one en-suite), modern integrated kitchen and a bright and spacious lounge. The property also comes with off street parking, communal gardens and its own private balcony.

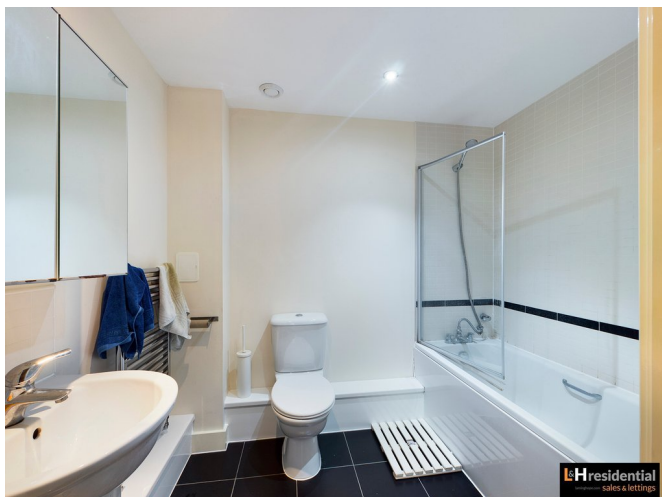
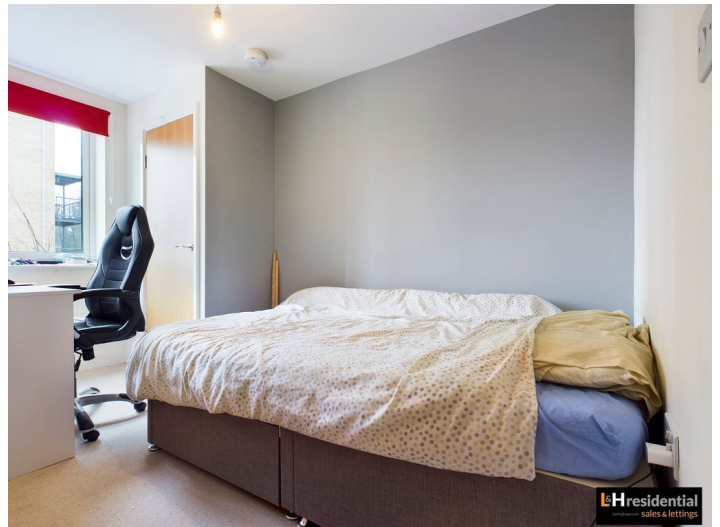
The property is available 11/2/21  
Unfurnished



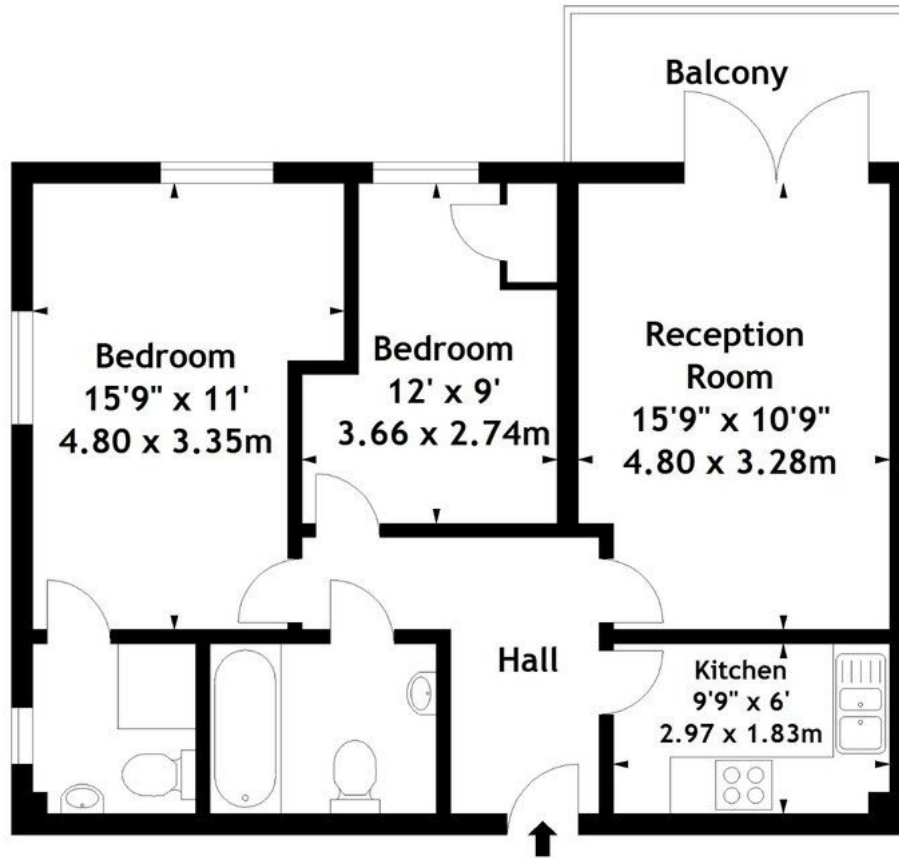
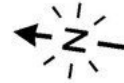
## Grade Close, WD6

£1,200 pcm

Recently built two bedroom two bathroom first floor apartment



Lawford Court,  
Grade Close, WD6  
Approx. Gross Internal Area  
673 Sq Ft - 62.52 Sq M



**First Floor**

Measured in accordance with RICS guidelines. Every attempt is made to ensure accuracy, however all measurements are approximate. This floor plan is for illustrative purposes only and is not to scale.  
© Datography Ltd 2016  
Photographs \* Floorplans \* Virtual Tours  
Tel: 0845 643 4401 [www.datography.com](http://www.datography.com)

**Laminghope**

12 Shenley Road, Borehamwood, Hertfordshire, WD6 1DL

T: 020 3617 1333

E: [enquiries@laminghope.com](mailto:enquiries@laminghope.com)