

e sales@laminghope.com  
t 020 3617 1333

**L&H**residential  
laminghope.com sales & lettings



## Greenside, Borehamwood, WD6

£1,700 pcm

- Semi detached house
- 25ft11 x 15ft6 reception room
- Integral garage
- Short walk from local shops, schools and bus routes.
- Furnished + Available now





L&H Residential are proud to bring to the market this well presented semi detached house located a short walk from local shops, schools and bus routes. The accommodation comprises of three bedrooms, family bathroom, 25ft11 x 15ft6 reception room, separate kitchen and a partially converted integral garage. The property also benefits from a private garden and off street parking.

Furnished + Available now

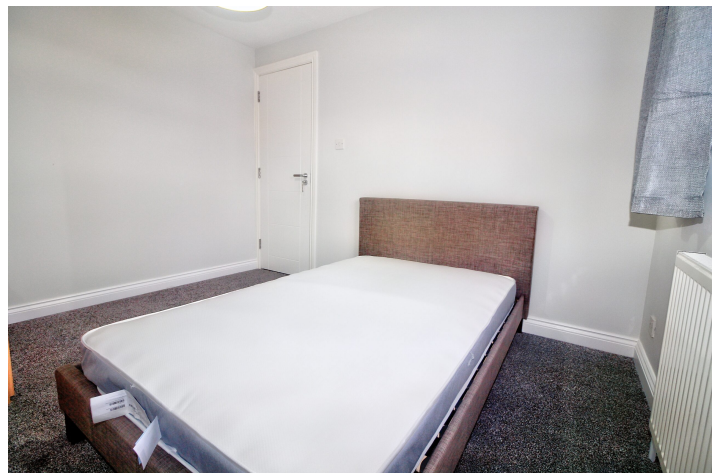
An early viewing is advised



## Greenside, Borehamwood, WD6

**£1,700 pcm**

A well presented three bedroom semi detached house located a short walk from local shops, schools and bus routes.



# Greenside, WD6

Approximate Gross Internal Area = 73.2 sq m / 788 sq ft

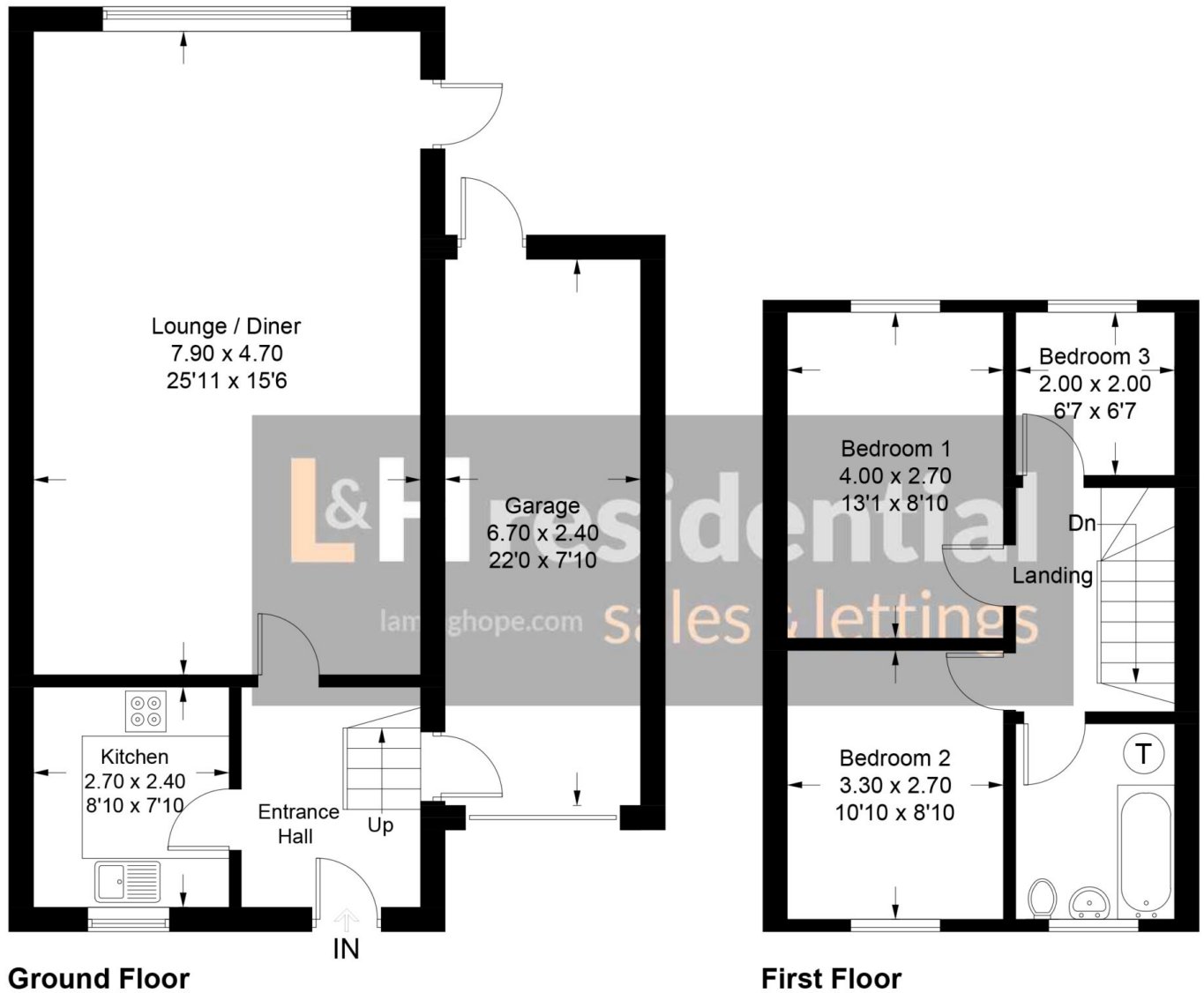


Illustration for identification purposes only, measurements are approximate, not to scale. floorplansUsketch.com © (ID795900)

**Laminghope**

12 Shenley Road, Borehamwood, Hertfordshire, WD6 1DL

T: 020 3617 1333

E: [enquiries@laminghope.com](mailto:enquiries@laminghope.com)