

e sales@laminghope.com  
t 020 3617 1333

**L&H**residential  
laminghope.com sales & lettings



## Hartforde Road, Borehamwood, WD6

**£575,000**

- Extended terraced house
- Four bedrooms
- Through lounge
- Kitchen/diner
- Two bathrooms
- Large garden with side access
- Self contained annexe/outbuilding in garden
- Off street parking







L&H Residential are proud to bring to the market this well presented and extended terraced house located just 0.8 miles from Elstree & Borehamwood train station and a short walk to local schools, shops, bus routes and places of worship. The accommodation comprises of ; four bedrooms, two bathrooms, through lounge, kitchen/diner, utility room and a self contained annex/outbuilding in the back of the garden. The property boasts other great features including; off street parking, large private garden with side access and potential to extend into the loft (stpp).

**Receptions**

**Kitchen**

**Bedrooms**

**Bathrooms**



# Hartforde Road, Borehamwood, WD6

**£575,000**

An extended four bedroom terraced with off street parking and large garden located just 0.8 miles from Elstree & Borehamwood train station and a short walk to local schools, shops, bus routes and places of worship.





## Hartforde Road, WD6

Approximate Gross Internal Area = 114.5 sq m / 1232 sq ft

Annexe = 28.9 sq m / 312 sq ft

Total = 143.4 sq m / 1544 sq ft

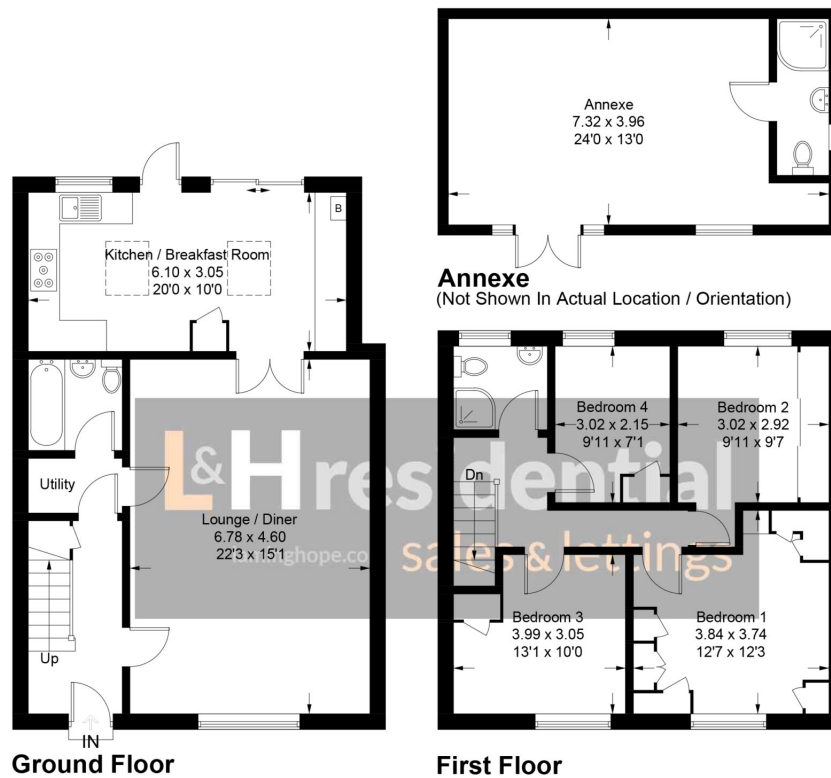


Illustration for identification purposes only, measurements are approximate, not to scale. floorplansUsketch.com © (ID 713960)

### Laminghope

12 Shenley Road, Borehamwood, Hertfordshire, WD6 1DL

T: 020 3617 1333

E: enquiries@laminghope.com