

e sales@laminghope.com

t 020 3617 1333

L&Hresidential
laminghope.com sales & lettings



Holders Hill Crescent, London, NW4

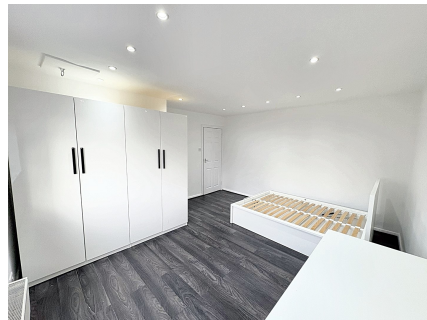
£3,500 pcm

- Substantial 4 bedroom detached house
- Master bedroom with en-suite bathroom and walk in wardrobe
- Excellent sized bedrooms
- Available immediately
- Two receptions





L&H Residential are proud to be introducing this substantial 4-bedroom detached house, boasting an exceptional level of space and comfort. Situated in a desirable location, this property is sure to impress with its generous dimensions and high-quality finishes throughout. The master bedroom features a luxurious en-suite bathroom and a walk-in wardrobe, adding a touch of opulence to every-day living. The remaining bedrooms are equally well-proportioned, providing ample space for relaxation and rest. With two reception rooms, there is plenty of room for entertaining guests or simply enjoying peaceful moments with loved ones. Available immediately, this property offers a rare opportunity to indulge in a lifestyle of comfort and sophistication. Don't miss out on the chance to make this exceptional house your new home. Contact us today to arrange a viewing and experience the beauty of this stunning property firsthand.



Holders Hill Crescent, London, NW4

£3,500 pcm

Impressive 4-bed detached house with spacious rooms and high-quality finishes. Luxurious master suite, two reception rooms, and immediate availability. Ideal for sophisticated living. Viewing recommended.





Laminghope

12 Shenley Road, Borehamwood, Hertfordshire, WD6 1DL

T: 020 3617 1333

E: enquiries@laminghope.com