

e sales@laminghope.com
t 020 3617 1333

L&Hresidential
laminghope.com sales & lettings



Kelly Court, Borehamwood, WD6

£299,950

- End of terrace house
- One bedroom
- Off street parking
- Garden
- Studio Way development
- CHAIN FREE





L&H Residential are proud to bring onto the market this recently refurbished end of terrace house located on the popular Studio Way development. The accommodation comprises of kitchen, lounge, bathroom and spacious bedroom. As well as being excellently located the property has other great benefits such as a park opposite, off street parking, private garden and being sold CHAIN FREE.

An early viewing is advised



Kelly Court, Borehamwood, WD6

£299,950

A recently refurbished one bedroom freehold house with off street parking located in the Studio Way development being sold CHAIN FREE.

Kelly Court, WD6
Approx. Gross Internal Area
440 Sq Ft - 40.88 Sq M



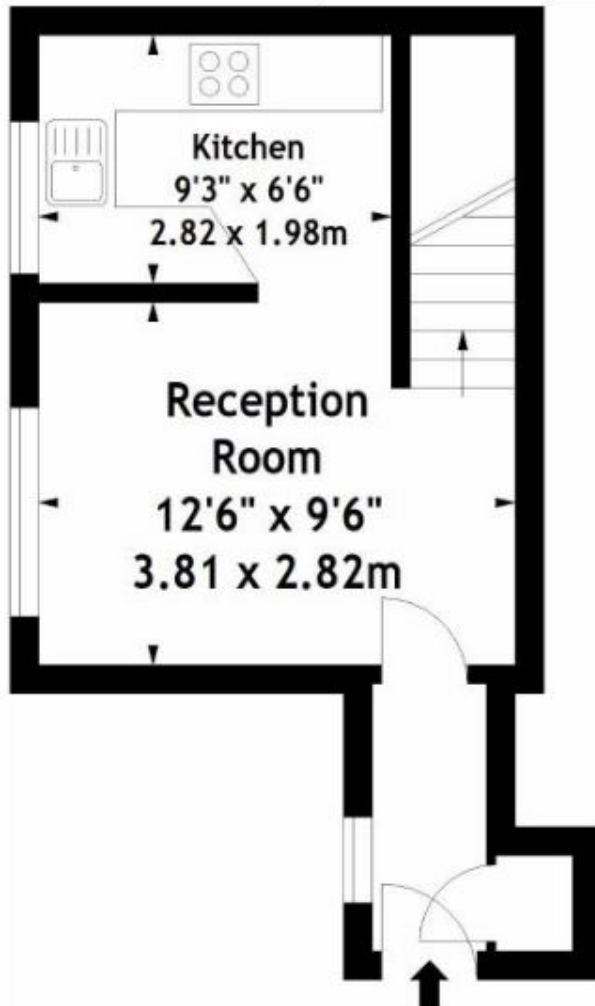
L&Hresidential

t 020 3617 1333

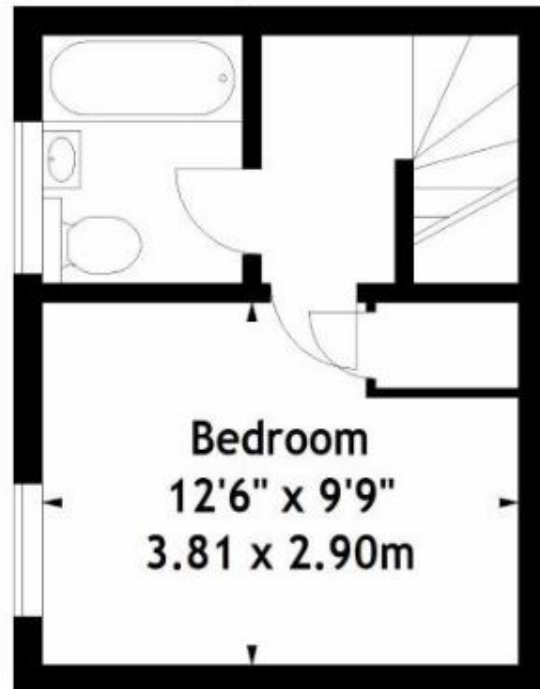
laminghope.com

sales & lettings

e enquiries@laminghope.com



Ground Floor



First Floor

Laminghope

12 Shenley Road, Borehamwood, Hertfordshire, WD6 1DL

T: 020 3617 1333

E: enquiries@laminghope.com