

e sales@laminghope.com
t 020 3617 1333

L&Hresidential
laminghope.com sales & lettings



Kensington Way, Borehamwood, WD6

£275,000

- Second floor (top) flat
- Two bedrooms
- Separate Kitchen
- Spacious and bright lounge
- Family bathroom with bath and separate shower
- Ample parking for visitors
- Short walk to local shops and transport
- Use of the loft for storage
- Virtual tour available upon request





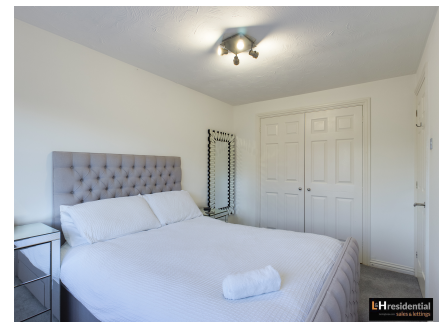
L&H Residential are proud to bring to the market this well presented second (top) floor apartment . The accommodation comprises of two bedrooms, lounge, spacious kitchen and modern family bathroom. The property has other great features including; use of the loft, an allocated parking space and ample visitor parking

Lounge

Kitchen

Bedrooms

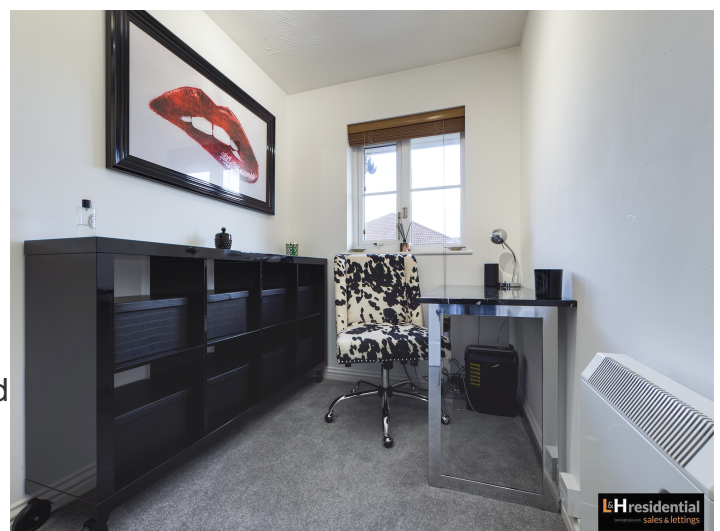
Bathroom



Kensington Way, Borehamwood, WD6

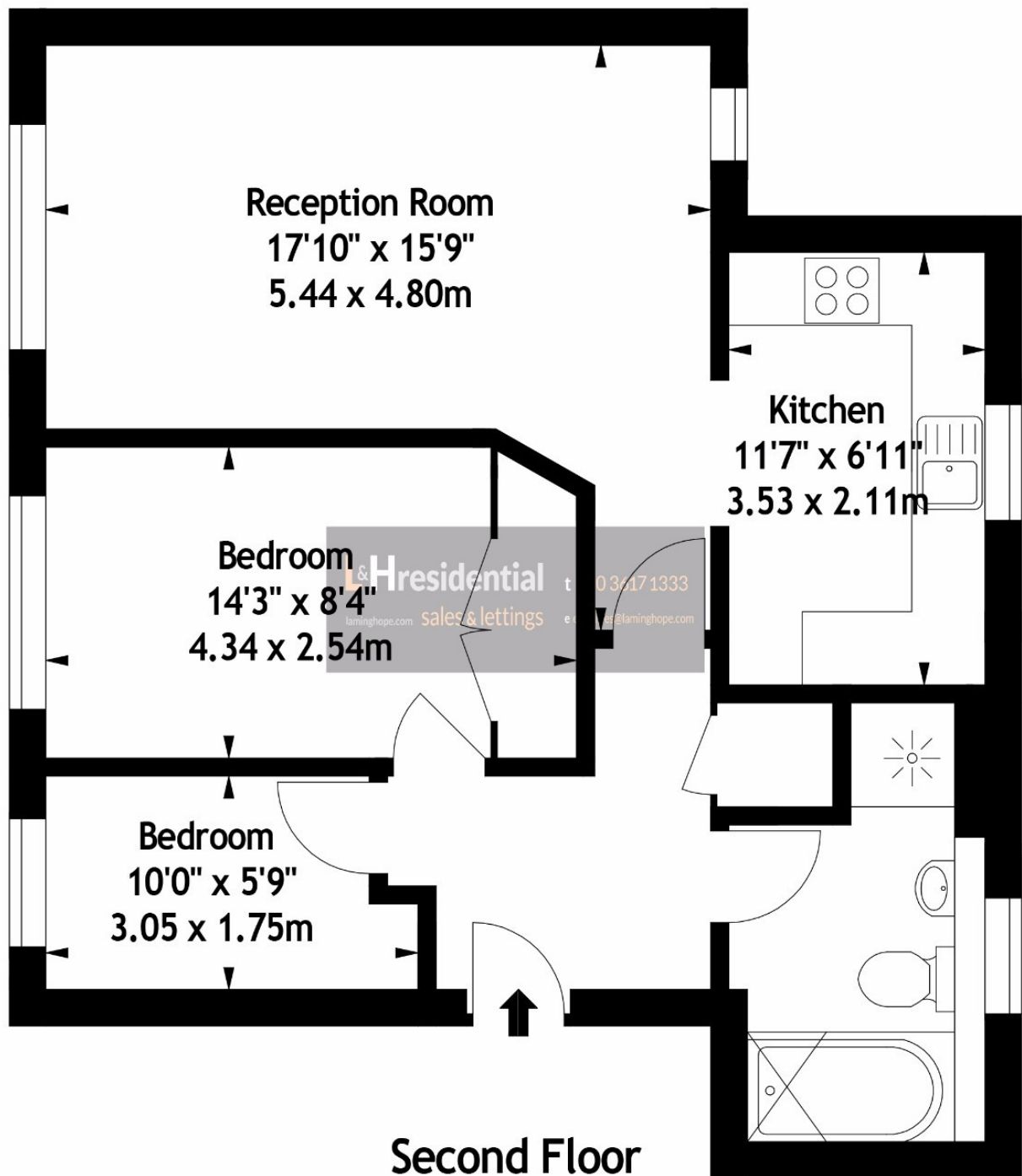
£275,000

A well presented two bedroom second floor apartment with an allocated parking space and located a short walk to local shops and transport.





Kensington Way WD6
Approx. Gross Internal Area
629 Sq Ft - 58.46 Sq M



Measured in accordance with RICS guidelines. Every attempt is made to ensure accuracy, however all measurements are approximate. This floor plan is for illustrative purposes only and is not to scale.

© Datography Ltd 2017

Photographs * Floorplans * Virtual Tours

Laminghope

12 Shenley Road, Borehamwood, Hertfordshire, WD6 1DL

T: 020 3617 1333

E: enquiries@laminghope.com