

e sales@laminghope.com
t 020 3617 1333

L&Hresidential
laminghope.com sales & lettings



Kingsley Avenue, Borehamwood, WD6

£269,950

- Ground floor maisonette
- One double bedroom
- Own private entrance
- Spacious lounge
- Private garden
- Short walk to local shops and Synagogue
- CHAIN FREE
- Off street parking





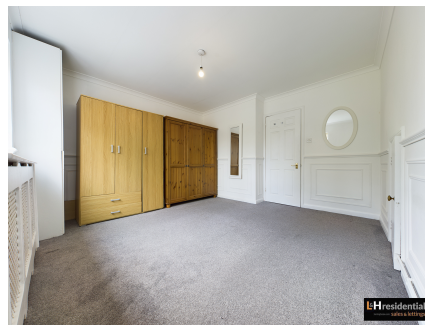
L&H Residential are proud to bring to the market this modern and spacious ground floor maisonette located just 0.5 miles from Elstree and Borehamwood train station and a short walk to local shops and places of worship. The accommodation comprises of ; bedroom, bathroom, kitchen and lounge. The property boasts other great features including; own private entrance, off street parking, private garden and being sold chain free.

Lounge

Kitchen

Bedroom

Bathroom



Kingsley Avenue, Borehamwood, WD6

£269,950

A spacious one bedroom ground floor maisonette with own private entrance located just 0.5 miles from Elstree & Borehamwood train station.



APPROX. GROSS INTERNAL FLOOR AREA 530 sq. ft / 49.30 sq. m (Including Restricted Height Area)
APPROX. GROSS INTERNAL FLOOR AREA 511 sq. ft / 47.50 sq. m (Excluding Restricted Height Area)

Floorplan is for illustrative purposes only and is not to scale.
 Every attempt has been made to ensure the accuracy of the floorplan shown, however all measurements, fixtures, fittings and data shown are an approximate interpretation for illustrative purposes only.
 Liability for errors, omissions or mis-statement through negligence or otherwise is hereby excluded.

CP CREATIVE
 PROPERTY MARKETING

Laminghope

12 Shenley Road, Borehamwood, Hertfordshire, WD6 1DL

T: 020 3617 1333

E: enquiries@laminghope.com