

e sales@laminghope.com  
t 020 3617 1333

**L&H**residential  
laminghope.com sales & lettings



## Lion Court, Studio Way, Borehamwood

**£219,950**

- Recently refurbished top floor flat
- One bedroom
- Open plan kitchen/living room
- Long lease
- Private parking
- Communal gardens
- Use of loft

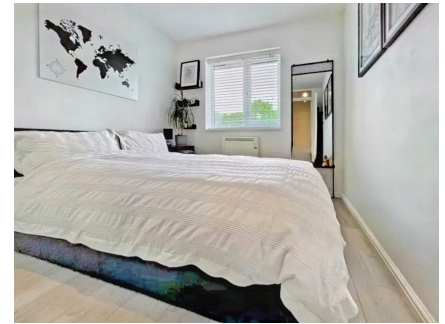






L&H Residential are proud to bring to the market this recently refurbished and excellently presented top floor flat located in the sought after Studio Way development a short walk from local shops, bus routes and Sky studios. The accommodation comprises of a bedroom, bathroom and an open plan kitchen/living room. The property also benefits from a long lease, private parking and communal gardens.

An early viewing is advised.

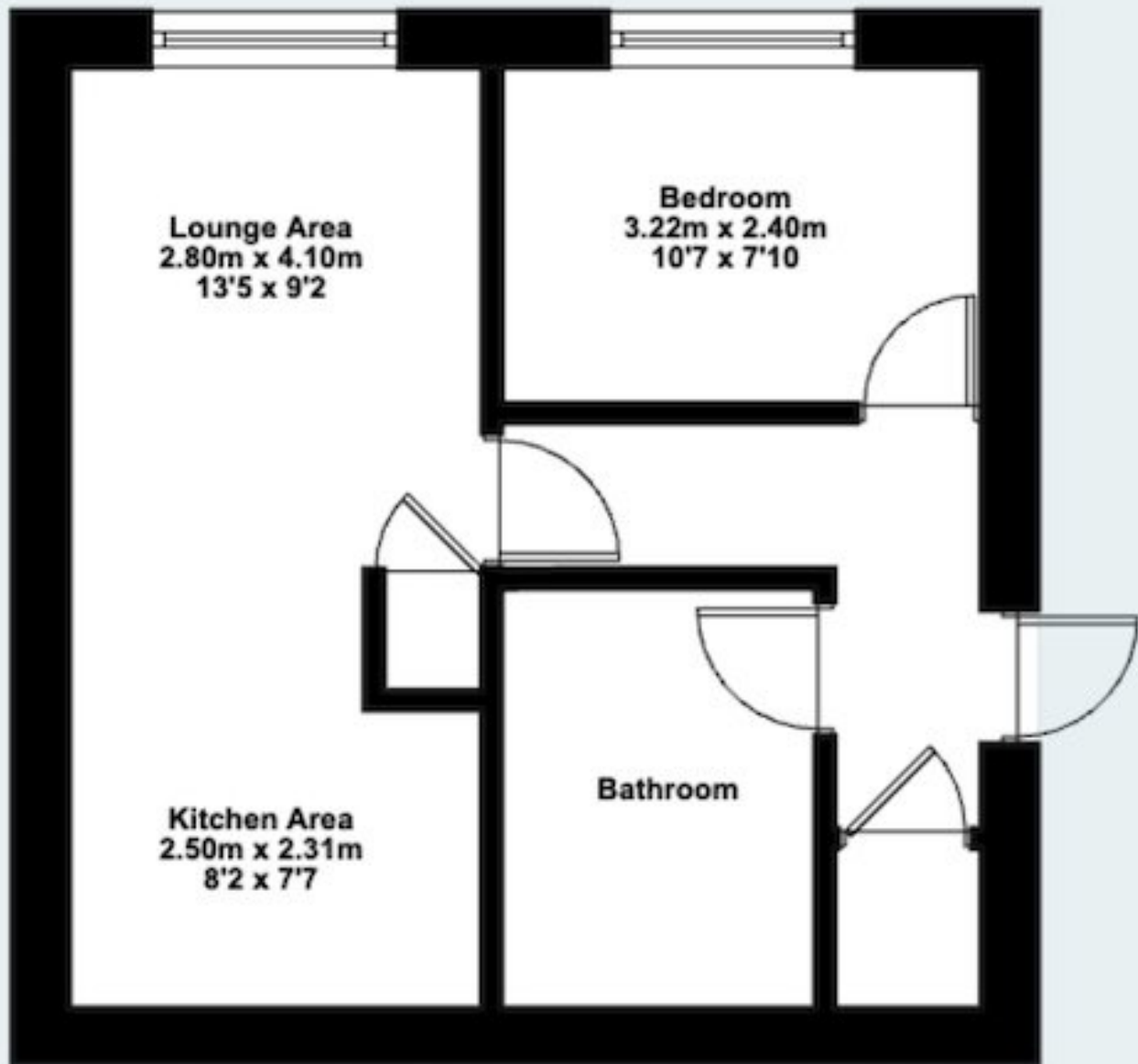


## Lion Court, Studio Way, Borehamwood

**£219,950**

A recently refurbished one bedroom top floor flat with an allocated parking space.





**Approx Floor Size**  
34.6 Sq.m  
372 Sq.ft

**Laminghope**

12 Shenley Road, Borehamwood, Hertfordshire, WD6 1DL

T: 020 3617 1333

E: [enquiries@laminghope.com](mailto:enquiries@laminghope.com)