

e sales@laminghope.com
t 020 3617 1333

L&Hresidential
laminghope.com sales & lettings



Manor Way, Borehamwood, WD6

£335,000

- Spacious First Floor Flat
- Two Double Bedrooms
- Two Balconies & Communal Gardens
- Gated Underground Allocated Parking Space
- 0.8 Miles From Elstree & Borehamwood Train Station
- Short Walk To Local Shops, Bus Routes, Schools including Yavneh Primary School
- Long Lease
- CHAIN FREE
- Lift & Fob Entrance

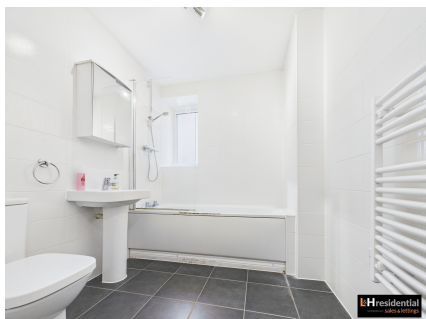




L&H Residential are proud to present this spacious first floor flat offers 810 square feet of well-designed living accommodation, ideal for professionals, couples, or small families seeking comfort and convenience. The property comprises two generously sized double bedrooms, each providing ample space for furnishings and storage. The modern layout features a bright and airy reception area, complemented by large windows that allow natural light to flow throughout the home. The kitchen is thoughtfully arranged, with contemporary fittings and integrated appliances for ease of use.

Residents benefit from the security and convenience of a gated underground allocated parking space, as well as lift access and a fob entrance system (providing peace of mind and accessibility for all). The building is well-maintained, with communal areas kept to a high standard. Located just 0.8 miles from Elstree and Borehamwood train station, the property offers excellent transport links to central London and beyond. Local shops, bus routes, and schools, including the highly regarded Yavneh Primary School, are all within a short walk.

This flat is offered chain free and comes with a long lease, making it an attractive option for both homebuyers and investors. Early viewing is highly recommended to appreciate the quality and convenience on offer.



Manor Way, Borehamwood, WD6

£335,000

Spacious 2-bed first floor flat with modern kitchen, gated parking, lift, and fob entry. Close to station, shops, schools. Chain free, long lease. Ideal for professionals or families.



