

e sales@laminghope.com
t 020 3617 1333

L&Hresidential
laminghope.com sales & lettings



Micklefield Way, Borehamwood, WD6

£449,950

- Extended terraced house
- Three bedrooms
- Through lounge
- Separate eat in kitchen
- Downstairs WC
- Off street parking
- Private garden
- Short walk to local shops and transport





L&H Residential are proud to bring to the market this beautifully presented terraced house. The accommodation comprises of; three bedrooms, family bathroom, downstairs guest W.C, through lounge and spacious and modern eat in kitchen. The property boasts other great features including; off street parking for two cars and a low private astro turfed garden.

An early viewing is advised

Kitchen

Reception rooms

Bedrooms

Bathroom

Guest W.C

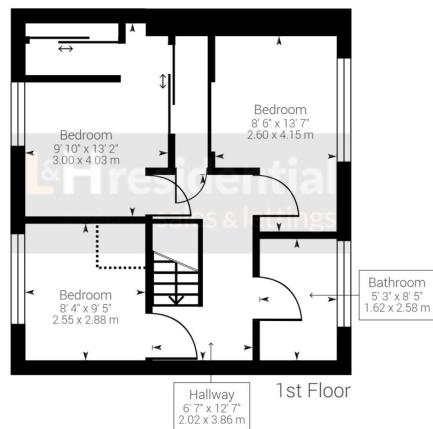
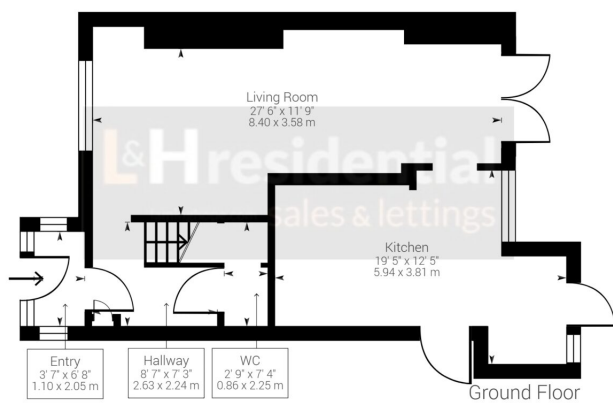


Micklefield Way, Borehamwood, WD6

£449,950

A beautifully presented and extended three bedroom Scotswood Pine terraced house located a short walk to local shops, schools and bus routes.





Approximate net internal area: 1034.2 ft² / 96.08 m²

While every attempt has been made to ensure accuracy, all measurements are approximate, not to scale. This floor plan is for illustrative purpose only and should be used as such by any prospective tenant or purchaser.

Powered by Giraffe360

Laminghope

12 Shenley Road, Borehamwood, Hertfordshire, WD6 1DL

T: 020 3617 1333

E: enquiries@laminghope.com