

e sales@laminghope.com
t 020 3617 1333

L&Hresidential
laminghope.com sales & lettings



Mortimer Close, Bushey, WD23

£549,950

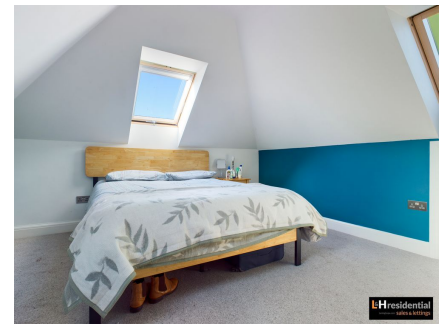
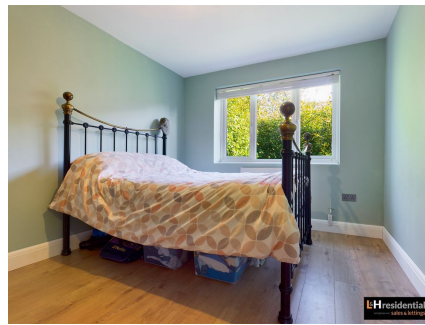
- Detached Bungalow
- Three Bedrooms
- Open Plan Living Space
- Private Garden
- Two Parking Spaces
- Separate Study
- CHAIN FREE
- Ground Floor Guest WC
- Recently Built & Energy Efficient





L&H Residential are proud to bring to the market this rarely available recently built detached bungalow located in a quiet and secluded spot off Ashfield Avenue. It is a short walk to a range of local schools, shops and bus routes, with the Green Flag Park, King George recreational ground moments away. The accommodation comprises of a large open plan kitchen/diner/lounge, three good sized bedrooms, a family bathroom with separate bath and shower, a ground floor WC and a study/home office. The property also benefits from having two off street parking spaces and a private garden with side access. The property is also offered chain free.

An early viewing is advised



Mortimer Close, Bushey, WD23

£549,950

A recently built three bedroom detached bungalow located in the heart of Bushey village and also benefits from having two parking spaces.





Laminghope

3 Penta Court, Station Road, Borehamwood, Hertfordshire, WD6 1SL

T: 020 3617 1333

E: enquiries@laminghope.com