

e sales@laminghope.com
t 020 3617 1333

L&Hresidential
laminghope.com sales & lettings



Nicoll Way, Borehamwood, WD6

£554,950

- Extended terraced house
- Four bedrooms
- Two bathrooms (one ensuite)
- Kitchen/diner
- Off street parking for two cars
- Rear garden with side access
- Bus route 107
- Potential to add downstairs guest W.C.





L&H Residential are proud to bring to the market this well presented extended terraced house located a short walk from local schools, shops and bus route 107. The accommodation comprises of four bedrooms, two bathrooms (one ensuite), kitchen/diner and two reception rooms. The property also benefits from off street parking for two cars, rear garden with side access and potential to add a downstairs guest W.C.

An early viewing is advised

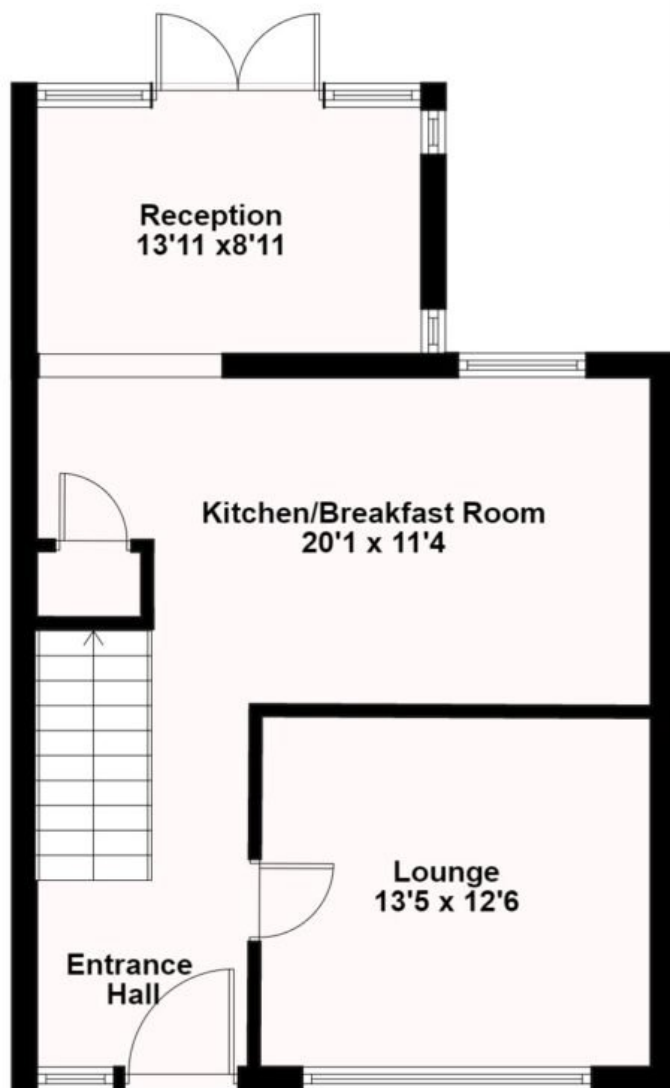


Nicoll Way, Borehamwood, WD6

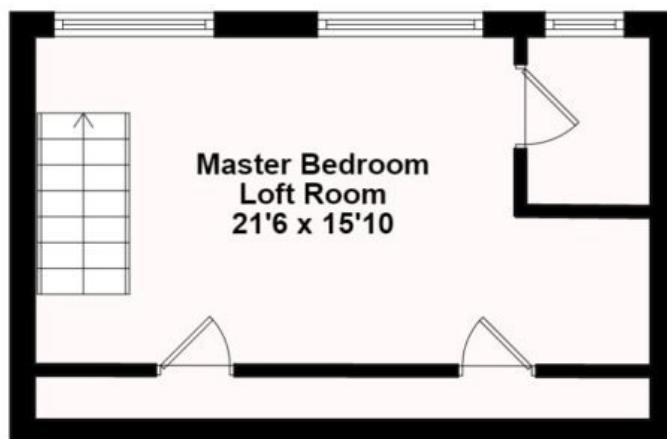
£554,950

A well presented four bedroom two bathroom terraced house with off street parking for two cars.

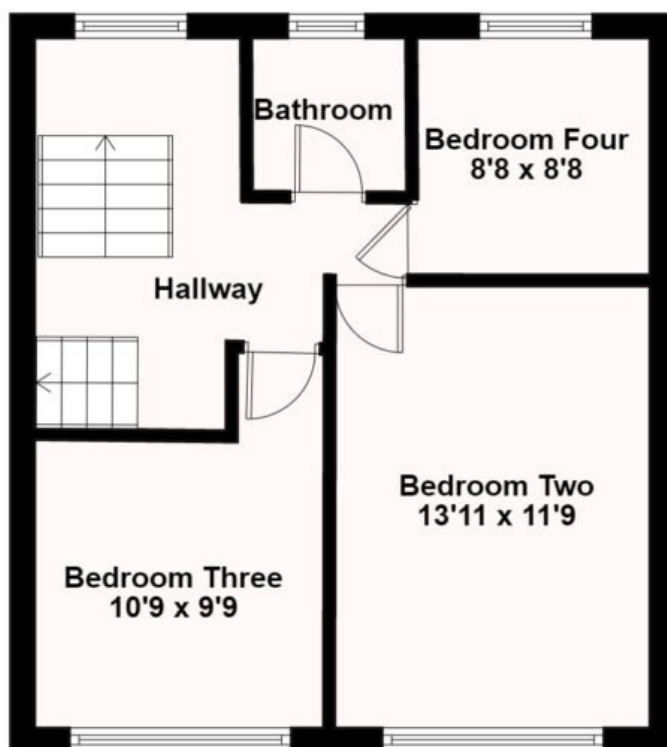




Ground Floor
599 sq.ft approx



Loft Room
340 sq.ft approx



First Floor
475 sq.ft approx

Total Floor Area
1414 sq.ft approx
431 sq.m approx

Laminghope

12 Shenley Road, Borehamwood, Hertfordshire, WD6 1DL

T: 020 3617 1333

E: enquiries@laminghope.com