

e sales@laminghope.com  
t 020 3617 1333

**L&H**residential  
laminghope.com sales & lettings



## Robeson Way, Borehamwood, WD6

**£2,000 pcm**

- End of Terraced house
- Two double bedrooms
- Two receptions
- Modern separate kitchen
- Downstairs guest W.C.
- Two parking spaces
- Private garden with side access
- Studio Way development
- Unfurnished & Available Now



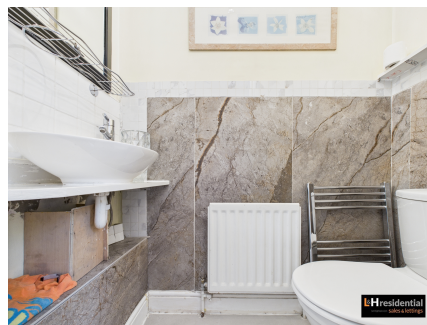




L&H Residential are proud to be presenting this stunning 2-bedroom end of terrace house located in the desirable Studio Way development. Boasting a contemporary design, this property offers two well-appointed double bedrooms, two spacious reception rooms, and a modern separate kitchen, providing ample space for comfortable living. The ground floor features a convenient guest W.C. for added practicality.

Benefitting from two parking spaces, this home provides hassle-free parking arrangements. The private garden with side access offers a tranquil space for relaxation and outdoor dining.

Located in the sought-after Studio Way development, this property is offered unfurnished, providing a blank canvas for personalisation. With immediate availability, this residence presents a fantastic opportunity for those seeking a stylish and modern home in a prime location. Don't miss out on the chance to make this sophisticated property your own. Viewing is highly recommended.



## Robeson Way, Borehamwood, WD6

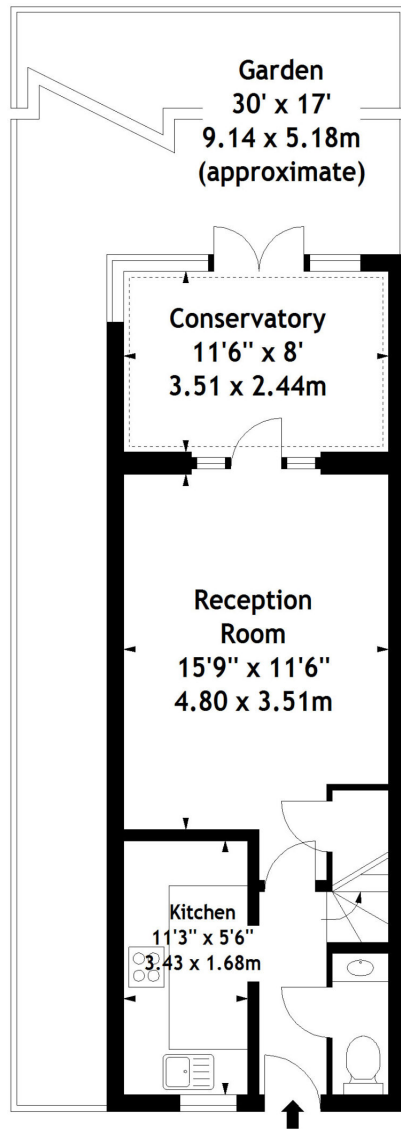
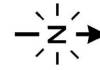
**£2,000 pcm**

Stunning 2-bed end terrace in sought-after Studio Way dev. Modern design, 2 double beds, 2 reception rooms, 2 parking spaces, private garden. Unfurnished, immediate availability, prime location. Viewing recommended.

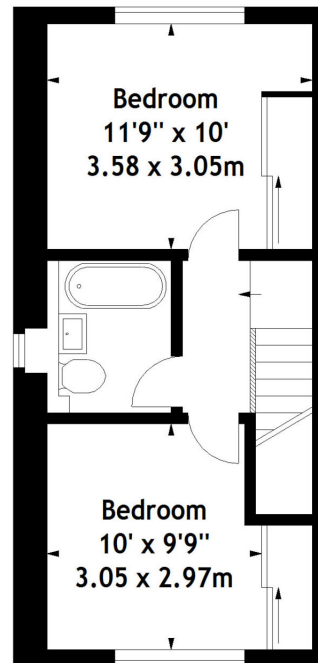




Robeson Way, WD6  
Approx. Gross Internal Area  
757 Sq Ft - 70.33 Sq M



Ground Floor



First Floor

Measured in accordance with RICS guidelines. Every attempt is made to ensure accuracy, however all measurements are approximate. This floor plan is for illustrative purposes only and is not to scale.  
© Datagraphy Ltd 2017  
Photographs \* Floorplans \* Virtual Tours  
Tel: 0845 643 4401 www.datagraphy.com

## Laminghope

12 Shenley Road, Borehamwood, Hertfordshire, WD6 1DL

T: 020 3617 1333

E: enquiries@laminghope.com