

e sales@laminghope.com  
t 020 3617 1333

**L&H**residential  
laminghope.com sales & lettings



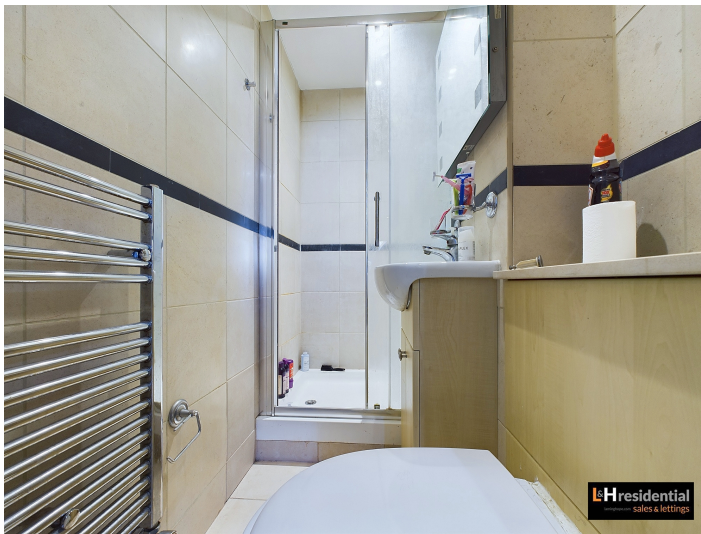
## Royal Drive, Princess Park Manor East Wing Royal Drive, N11

**£2,100 pcm**

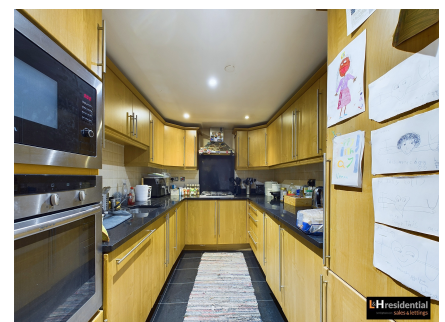
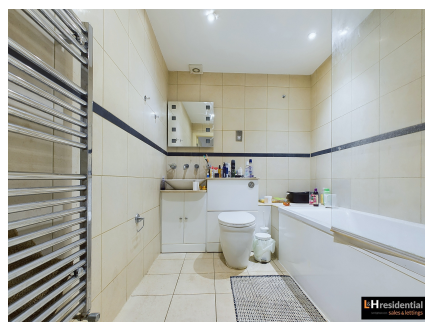
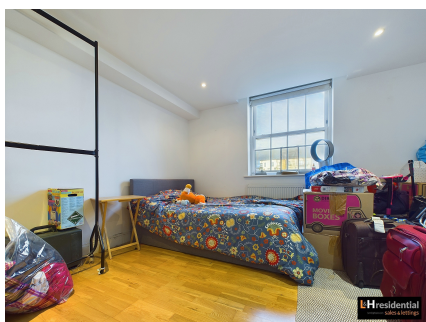
- Enviably set in a fabulous development surrounded by attractive parkland in 30 acres of grounds
- Princess Park Manor
- Third floor flat with lift
- Two double bedrooms
- Two bathrooms (one ensuite)
- Separate kitchen
- On site gym & Tennis courts



- Allocated parking space and ample visitor parking spaces
- 0.1 miles from New Southgate train station
- Unfurnished & Available 2/12/24



L&H Residential are proud to present this fantastic property boasting an enviable location within the acclaimed Princess Park Manor development, this exquisite third-floor flat presents a remarkable opportunity for discerning tenants seeking contemporary comfort amidst serene parkland. The property comprises two generously-sized double bedrooms, including a master bedroom with a sleek ensuite bathroom, as well as a separate bathroom for added convenience. A well-appointed kitchen offers ample space for culinary pursuits, while the bright and airy living area provides a welcoming retreat. Residents of Princess Park Manor can enjoy access to an on-site gym, tennis courts, and an allocated parking space, coupled with ample visitor parking spaces for guests. Situated a mere 0.1 miles from New Southgate train station, this residence offers excellent transport links to London and beyond. Available unfurnished from the 2nd of December, 2024, this property presents a rare blend of elegance, convenience, and contemporary living for those seeking the epitome of luxury.





# Royal Drive, Princess Park Manor East Wing Royal Drive, N11

**£2,100 pcm**

Luxurious 2-bed flat in Princess Park Manor with modern amenities. Master bedroom with ensuite, well-appointed kitchen, bright living area. On-site gym, tennis courts, parking. 0.1 miles from New Southgate train station. Available unfurnished from 2nd December 2024.



## Laminghope

12 Shenley Road, Borehamwood, Hertfordshire, WD6 1DL

T: 020 3617 1333

E: [enquiries@laminghope.com](mailto:enquiries@laminghope.com)