

e sales@laminghope.com  
t 020 3617 1333

**L&H**residential  
laminghope.com sales & lettings



## Sandringham Close, WD6

£2,150 pcm

- Modern double fronted family home ( 4 years old approx)
- Kitchen/diner + Lounge + study
- Four double bedrooms with fitted wardrobes
- Three bathrooms ( two en-suites)
- Off street parking up to three cars
- Garage
- Private west facing garden
- Short walking distance to Yavneh College
- 0.7 miles from Elstree and Borehamwood Train Station
- Downstairs guest WC





L&H Residential are proud to bring onto the market this recently built and very well presented double fronted family home excellently located within a short walking distance of Yavneh College, Elstree and Borehamwood Train station, local amenities and Synagogues. The accommodation comprises of; a spacious kitchen/diner, lounge, study, downstairs guest WC, four double bedrooms and three bathrooms ( two en-suites). The property boasts many great features including a garage, fitted wardrobes in bedrooms, off street parking for up to three cars and a private west facing garden.

Move in date 14/7/17  
Unfurnished



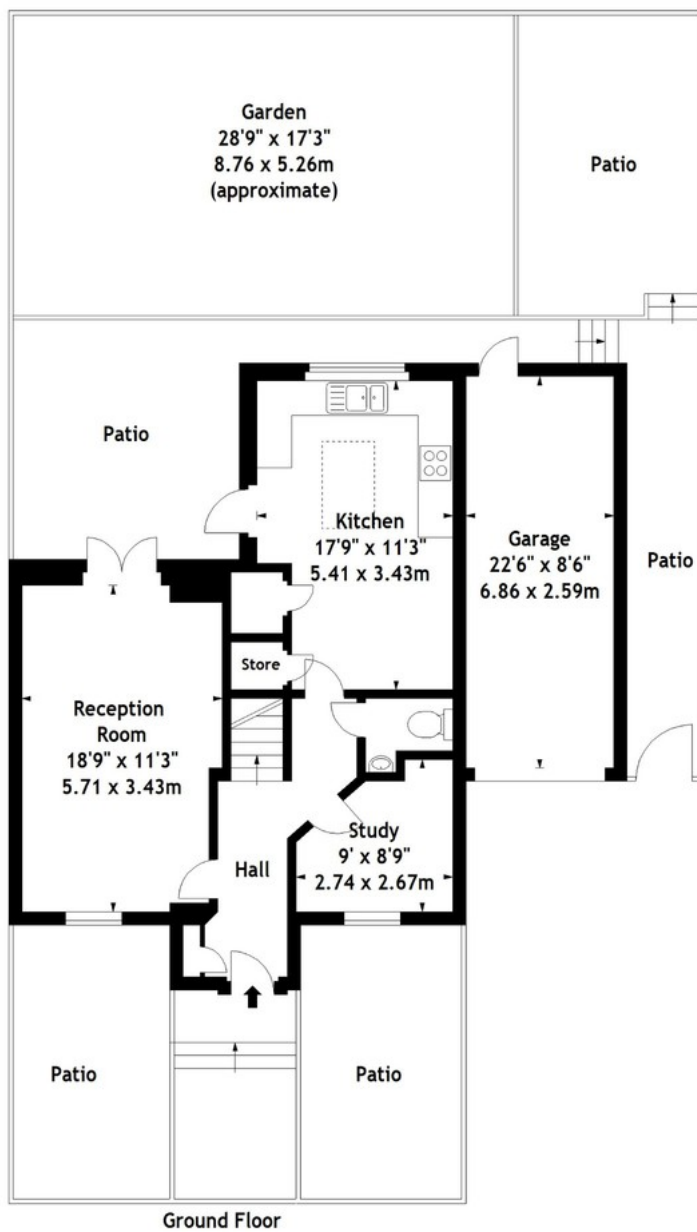
## Sandringham Close, WD6

**£2,150 pcm**

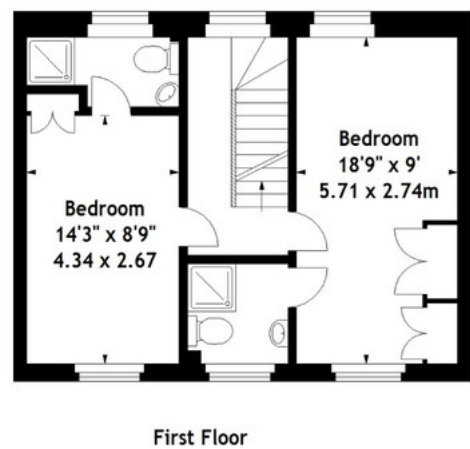
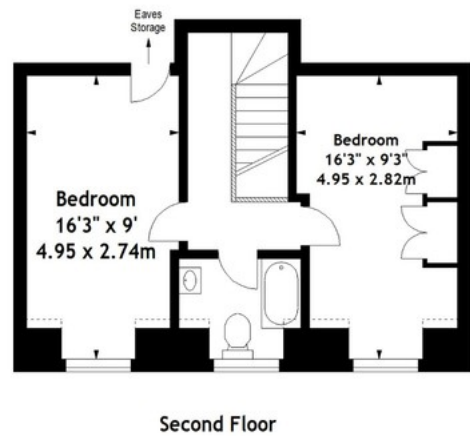
An ultra modern four double bedroom three bathroom double fronted end of terrace house.







Sandringham Close, WD6  
 Approx. Gross Internal Area  
 1693 Sq Ft - 157.28 Sq M  
 (Including Garage)



Measured in accordance with RICS guidelines. Every attempt is made to ensure accuracy, however all measurements are approximate. This floor plan is for illustrative purposes only and is not to scale.  
 © Datography Ltd 2016  
 Photographs \* Floorplans \* Virtual Tours  
 Tel: 0845 643 4401 www.datography.com

**Laminghope**

12 Shenley Road, Borehamwood, Hertfordshire, WD6 1DL

T: 020 3617 1333

E: [enquiries@laminghope.com](mailto:enquiries@laminghope.com)