

e sales@laminghope.com
t 020 3617 1333

L&Hresidential
laminghope.com sales & lettings



Shenley Road, WD6

£1,050 pcm

- Newly built
- 3rd floor flat with lift
- One bedroom (595sqft)
- Open plan living space
- Underground parking space
- Balcony
- 0.7 miles from Elstree and Borehamwood train station
- Communal gardens
- Available 11/01/2021
- Unfurnished





L&H Residential are proud to bring onto the market this newly built never lived in spacious flat located just 0.7 miles from Elstree and Borehamwood train station and a short walk to local amenities schools and places of worship. The accommodation comprises of; bedroom, bathroom and open plan kitchen/living area. The property has many great features as well as being excellently located it has; never been lived in, balcony, underground parking space and use of communal gardens.

Available 11/01/2021

unfurnished

An early viewing is advised



Shenley Road, WD6

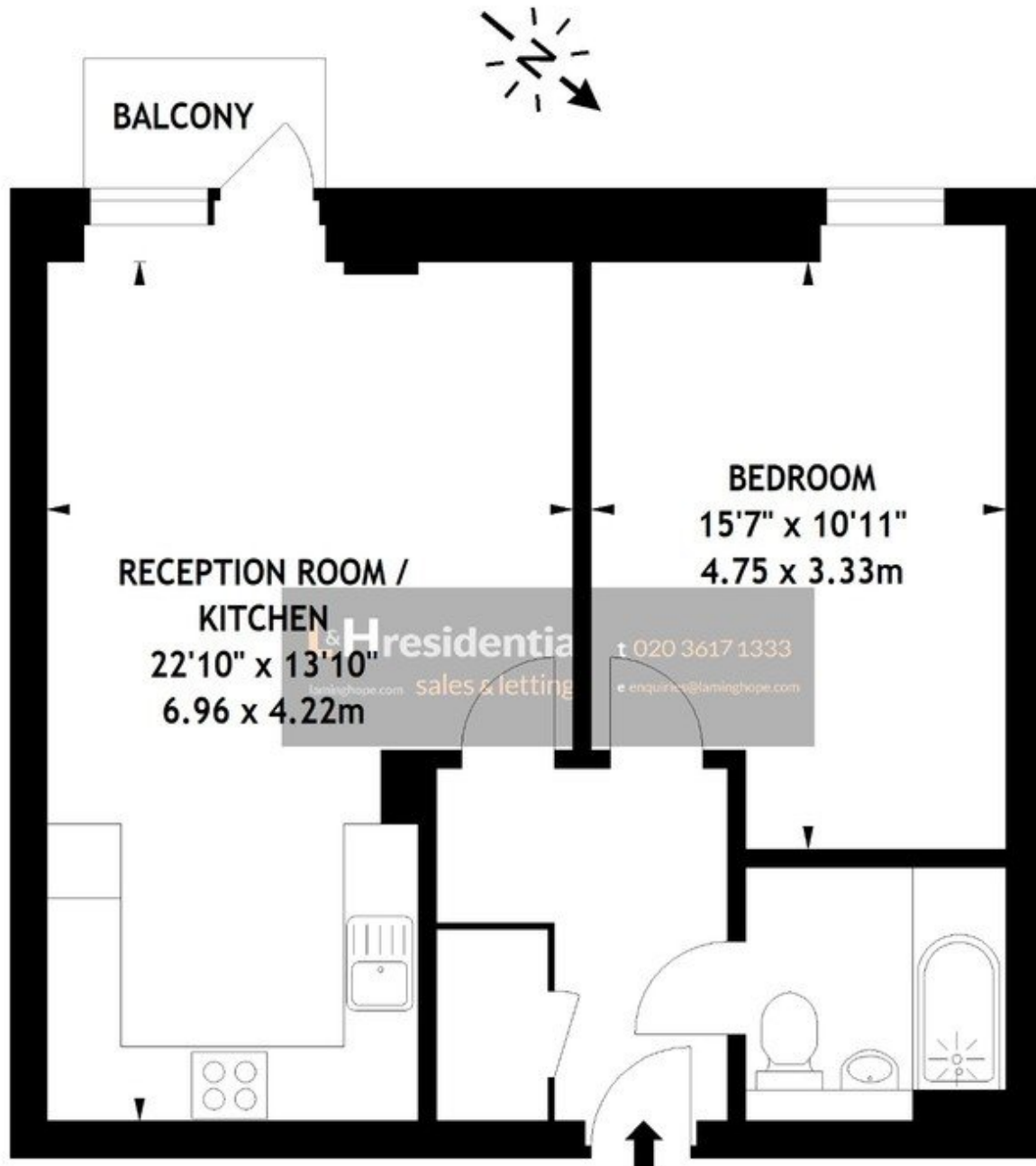
£1,050 pcm

Newly built and spacious one bedroom third floor apartment with lift.

FRANKLIN COURT, WD6

APPROX. GROSS INTERNAL AREA

595 SQ FT - 55.25 SQ M



THIRD FLOOR

Measured in accordance with RICS guidelines. Every attempt is made to ensure accuracy, however all measurements are approximate. This floor plan is for illustrative purposes only and is not to scale.

© Datography Ltd 2017

Photographs * Floorplans * Virtual Tours
Tel: 0845 643 4401 www.datography.com

12 Shenley Road, Borehamwood, Hertfordshire, WD6 1DL

T: 020 3617 1333

E: enquiries@laminghope.com