

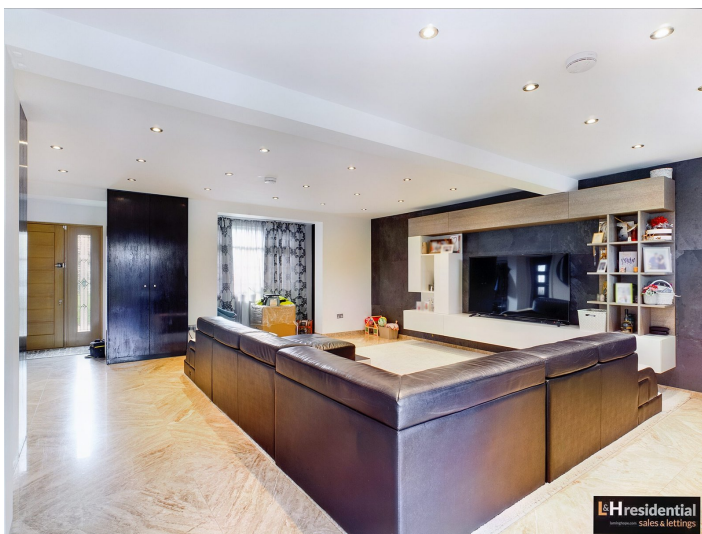


Sinderby Close, Borehamwood, WD6

£649,950

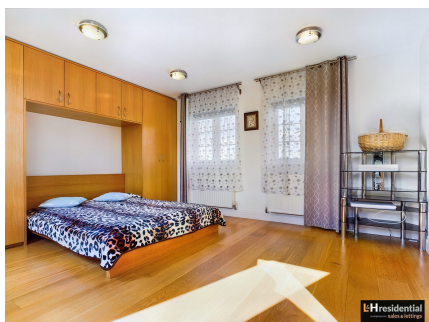
- Stunningly presented four double bedroom end of terrace house (1690sqft)
- Three bathrooms (one on ground floor)
- Spacious Kitchen/breakfast room
- 21ft living room
- Utility room/playroom
- Underfloor heating throughout ground floor
- Large private garden
- Short walk to local schools, shops, park and bus routes.
- On street parking

- CHAIN FREE



L&H Residential are proud to bring to the market this stunning recently extended and refurbished end of terraced house (1690sqft) located a short walk to local schools, shops, park and bus routes. The accommodation comprises of; four double bedrooms, three bathrooms (one on ground floor), utility room/play room, spacious lounge and an ultra-contemporary kitchen/breakfast room. The property boasts many great features such; underfloor heating throughout ground floor, large private garden and being sold CHAIN FREE.

An early viewing is advised

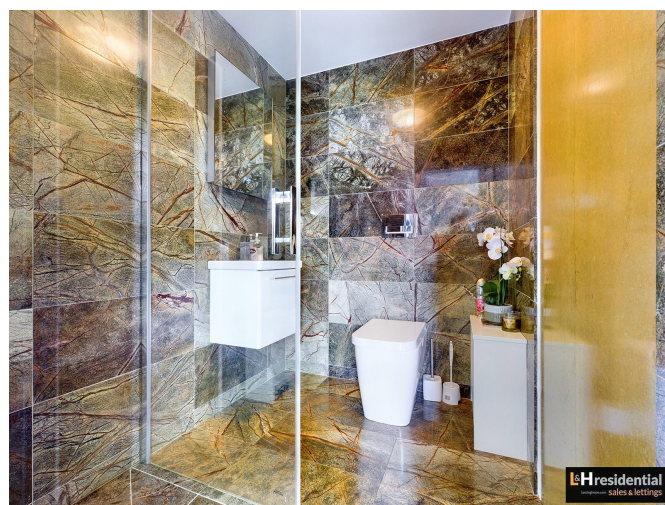
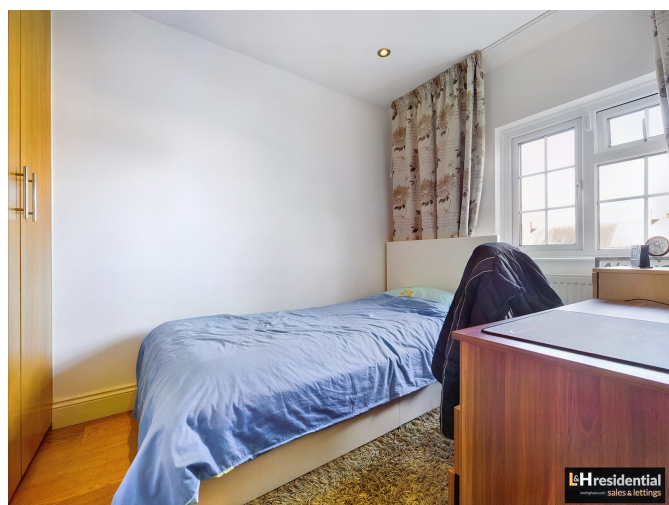
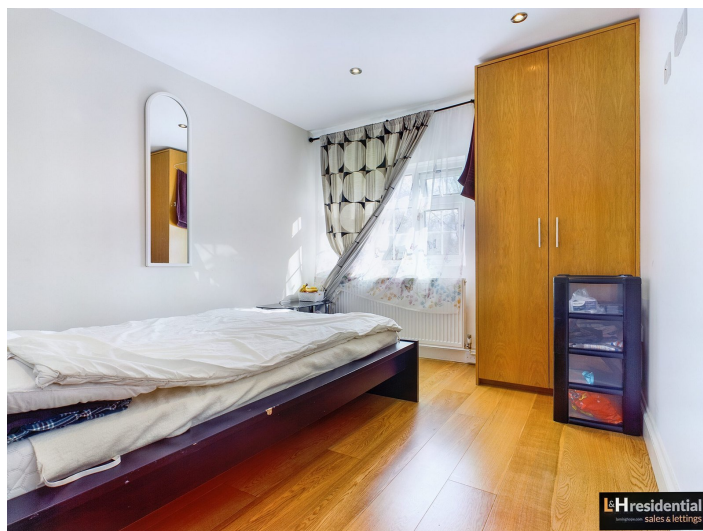


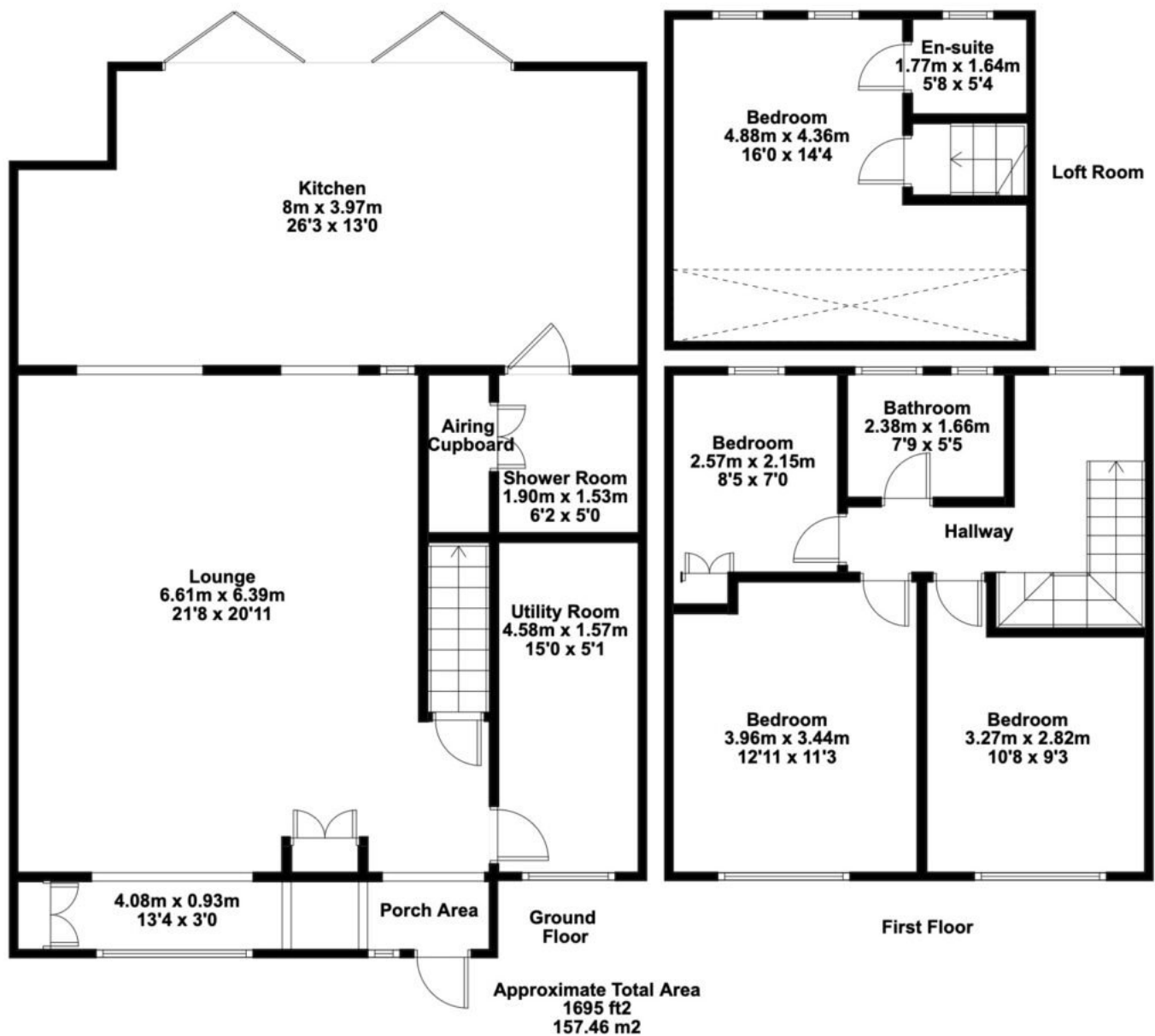
Sinderby Close, Borehamwood, WD6

£649,950

A stunningly presented four double bedroom

three bathroom end of terraced house located a short walk to local schools, shops, park and bus routes.





Laminghope

12 Shenley Road, Borehamwood, Hertfordshire, WD6 1DL

T: 020 3617 1333

E: enquiries@laminghope.com