

e sales@laminghope.com  
t 020 3617 1333

**L&H**residential  
laminghope.com sales & lettings



## Somerset Road, New Barnet, EN5

£1,250 pcm

- First floor flat
- Two double bedrooms
- South facing balcony
- Additional guest WC
- 0.2 miles from New Barnet train station & 0.8 miles from High Barnet and Oakleigh Park train station
- CHAIN FREE
- Communal garden
- Share of freehold







L&H Residential are proud to bring onto the market this well presented and refurbished first floor flat. Located just 0.2 miles from New Barnet train station and 0.8 miles from High Barnet and Oakleigh Park train station and a short walk to local shops. The accommodation comprises of; two double bedrooms, family bathroom, additional guest WC, lounge, separate kitchen and a south facing balcony.

Unfurnished

Move in date 4/10/21

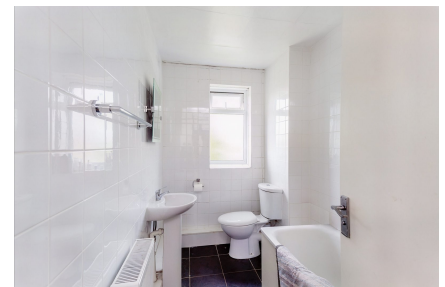
**Living Room**

**Kitchen**

**Bedroom**

**Bedroom**

**Bathroom**



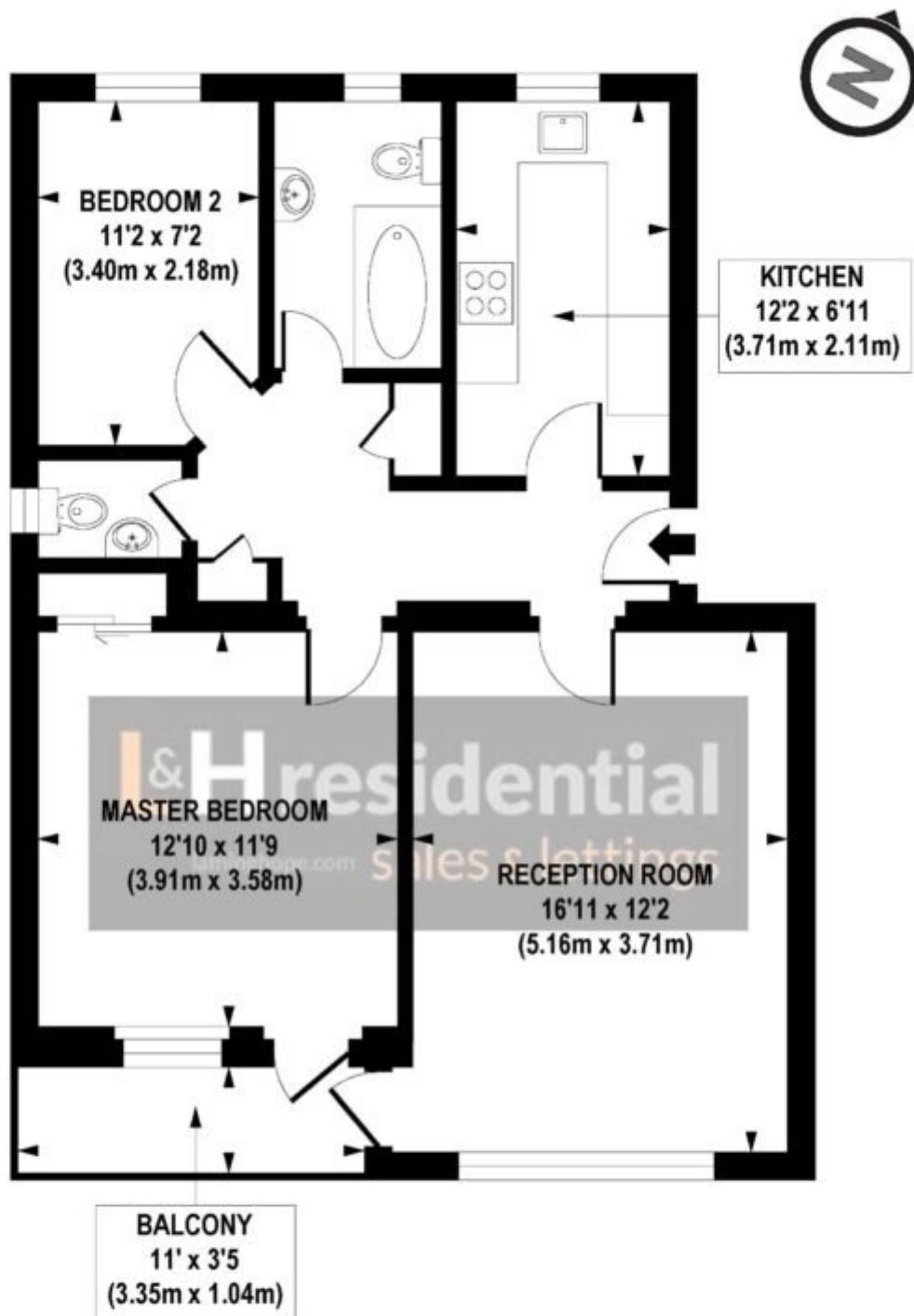
## Somerset Road, New Barnet, EN5

**£1,250 pcm**

A recently refurbished two double bedroom first floor flat.







FIRST FLOOR

**APPROX. GROSS INTERNAL FLOOR AREA 723 sq. ft / 67.23 sq. m**

Floorplan is for illustrative purposes only and is not to scale.  
Every attempt has been made to ensure the accuracy of the floorplan shown, however all measurements, fixtures, fittings and data shown are an approximate interpretation for illustrative purposes only.  
Liability for errors, omissions or mis-statement through negligence or otherwise is hereby excluded.

**CP CREATIVE**  
PROPERTY MARKETING

**Laminghope**

12 Shenley Road, Borehamwood, Hertfordshire, WD6 1DL

T: 020 3617 1333

E: [enquiries@laminghope.com](mailto:enquiries@laminghope.com)