

e sales@laminghope.com  
t 020 3617 1333

**L&H**residential  
laminghope.com sales & lettings



## St. John's Estate, Buckland Court St. John's Estate, N1

**£2,500 pcm**

- 3 bedroom flat
- Modern kitchen
- Recently refurbished
- Unfurnished
- Available immediately
- Excellent location







A 3 bedroom flat recently renovated offered immediately. Offering a modern kitchen, large reception room with wood flooring and Three good sized bedrooms. Available immediately. The property is ideally suited for a family or working professionals.

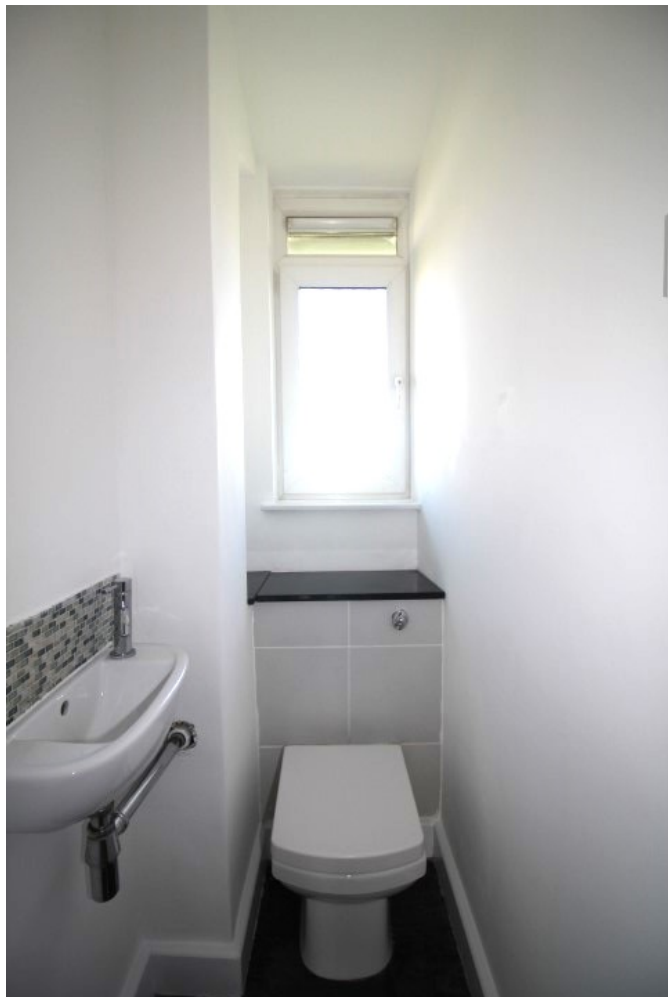


## St. John's Estate, Buckland Court St. John's Estate, N1

**£2,500 pcm**

Three bedroom flat recently renovated offered immediately.





**Laminghope**

12 Shenley Road, Borehamwood, Hertfordshire, WD6 1DL

T: 020 3617 1333

E: [enquiries@laminghope.com](mailto:enquiries@laminghope.com)