

e sales@laminghope.com  
t 020 3617 1333

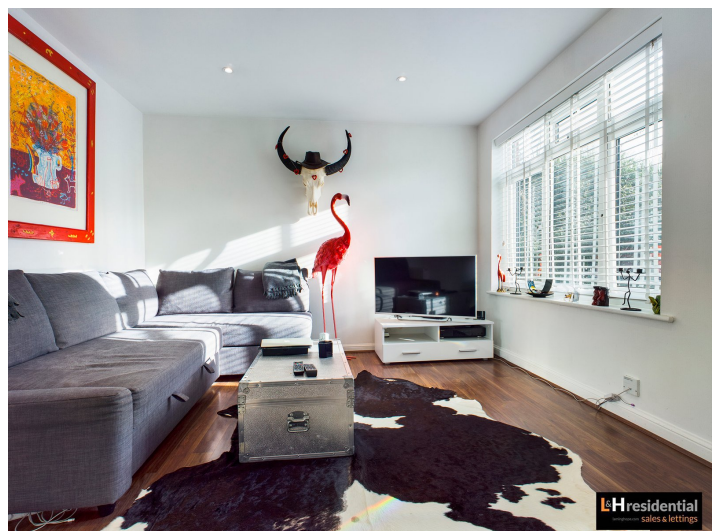
**L&H**residential  
laminghope.com sales & lettings



## St. Neots Close, Borehamwood, WD6

**£300,000**

- Double fronted end of terrace house
- One bedroom
- Allocated parking space
- Open plan living space
- Private (front) own garden
- large loft for storage with easy access
- Short walk to local shops and bus routes
- Cul de Sac in the Campions development
- CHAIN FREE







L&H Residential are proud to bring to the market this double fronted modern end of terrace house. The accommodation comprises of; bedroom, bathroom and an open plan kitchen/living area. The property boasts other great features including; an allocated parking space, large loft for storage with easy access and private (front) own garden.

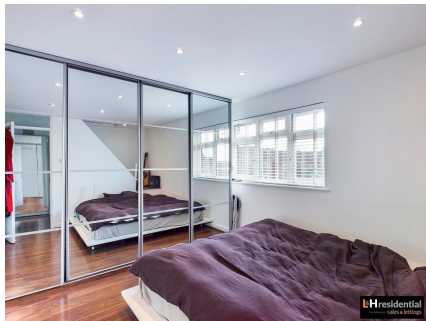
An early viewing is advised

**Living room**

**Kitchen**

**Bedroom**

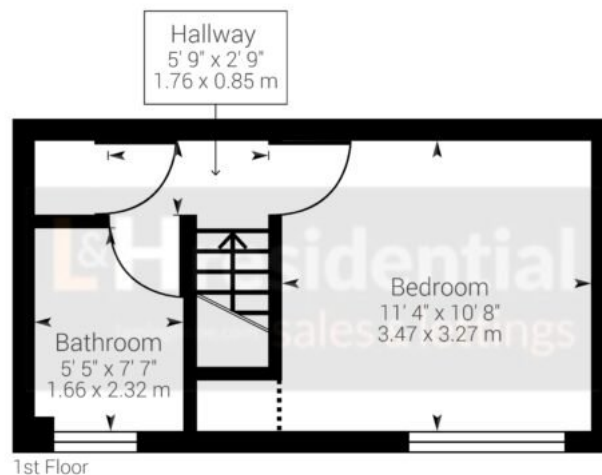
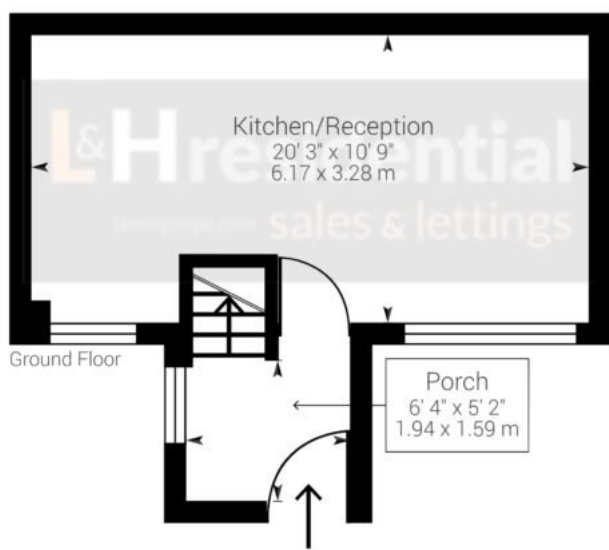
**Bathroom**



## St. Neots Close, Borehamwood, WD6

**£300,000**

A very well presented double fronted one bedroom end of terrace house located on a Cul De Sac off the popular Champions development.



Approximate net internal area: 450.46 ft<sup>2</sup> / 41.85 m<sup>2</sup>

While every attempt has been made to ensure accuracy, all measurements are approximate, not to scale. This floor plan is for illustrative purpose only and should be used as such by any prospective tenant or purchaser.

Powered by Giraffe360

## Laminghope

12 Shenley Road, Borehamwood, Hertfordshire, WD6 1DL

T: 020 3617 1333

E: [enquiries@laminghope.com](mailto:enquiries@laminghope.com)