

e sales@laminghope.com
t 020 3617 1333

L&Hresidential
laminghope.com sales & lettings



Stainer Road, Borehamwood, WD6

£450,000

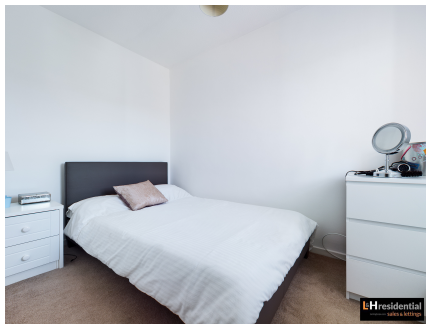
- Terraced house
- Three bedrooms
- Kitchen/diner
- Private southerly facing garden
- Off street parking for two cars
- Garage/utility room (potential to convert)
- Potential to extend (stpp)
- Short walk to local shops, schools and bus routes





L&H Residential are proud to bring to the market this spacious terraced house located a short walk to local schools, shops and bus routes. The accommodation comprises of; three bedrooms, bathroom, separate W.C, reception, kitchen/diner, utility room and a garage/utility room (potential to convert). As well as being excellently located the property also benefits from; off street parking for two cars, private garden and potential to extend (stpp).

An early viewing is advised

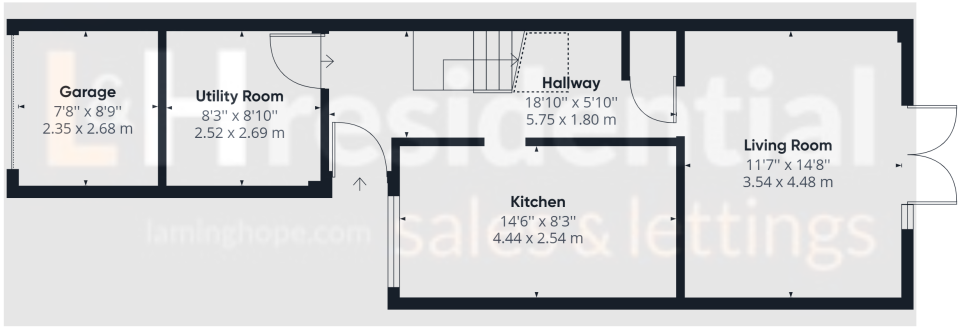


Stainer Road, Borehamwood, WD6

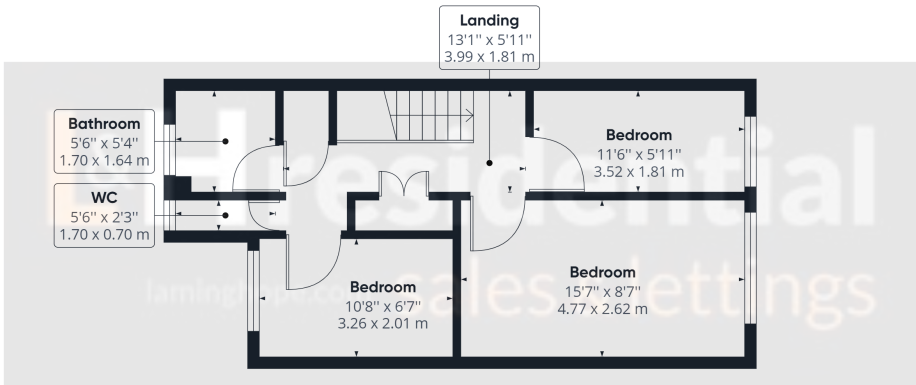
£450,000

Spacious three bedroom terraced house with garage and off street parking located a short walk to local schools, shops and bus routes.





Ground Floor Building 1



Floor 1 Building 1

Approximate total area⁽¹⁾
948.44 ft²
88.11 m²

Reduced headroom
14.62 ft²
1.36 m²

(1) Excluding balconies and terraces

Reduced headroom
(below 1.5m/4.92ft)

While every attempt has been made to ensure accuracy, all measurements are approximate, not to scale. This floor plan is for illustrative purposes only.

GIRAFFE360

Laminghope
12 Shenley Road, Borehamwood, Hertfordshire, WD6 1DL
T: 020 3617 1333
E: enquiries@laminghope.com