

e sales@laminghope.com
t 020 3617 1333

L&Hresidential
laminghope.com sales & lettings



Stanborough Avenue, Borehamwood, WD6

£200,000

- Well presented top floor flat
- One double bedroom
- Separate kitchen
- Balcony & Communal garden
- CHAIN FREE
- Short walk to local schools, shops and bus routes

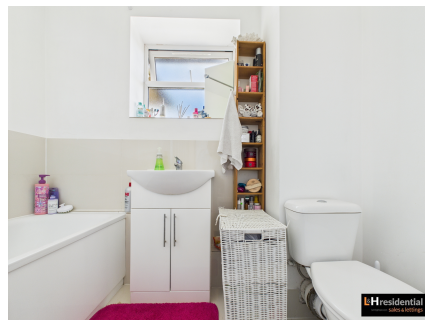




L&H Residential are proud to be presenting a charming top-floor one bedroom flat in a sought-after location, this property offers a delightful living space. The flat comprises a well-proportioned double bedroom, a separate kitchen providing ample space for culinary enthusiasts, and a balcony offering a pleasant outdoor retreat. Boasting a communal garden, the property provides a serene environment for relaxation.

Conveniently situated within a short walk to local schools, shops, and bus routes, this property offers ease of access to essential amenities, ensuring a convenient lifestyle for its occupants. The added benefit of residing in this well-presented flat is the absence of a chain, offering a seamless transition to the new owners.

Ideal for first-time buyers, professionals, or investors seeking a property with great potential, this chain-free flat presents a fantastic opportunity to own a comfortable and well-located residence. Don't miss the chance to make this property your own and enjoy all the benefits it has to offer. Schedule a viewing today!



Stanborough Avenue, Borehamwood, WD6

£200,000

Charming top-floor 1-bed flat in sought-after location with double bedroom, separate

kitchen, balcony, communal garden. Chain-free, close to amenities. Ideal for first-time buyers or investors. Schedule a viewing now!



Laminghope
12 Shenley Road, Borehamwood, Hertfordshire, WD6 1DL
T: 020 3617 1333
E: enquiries@laminghope.com